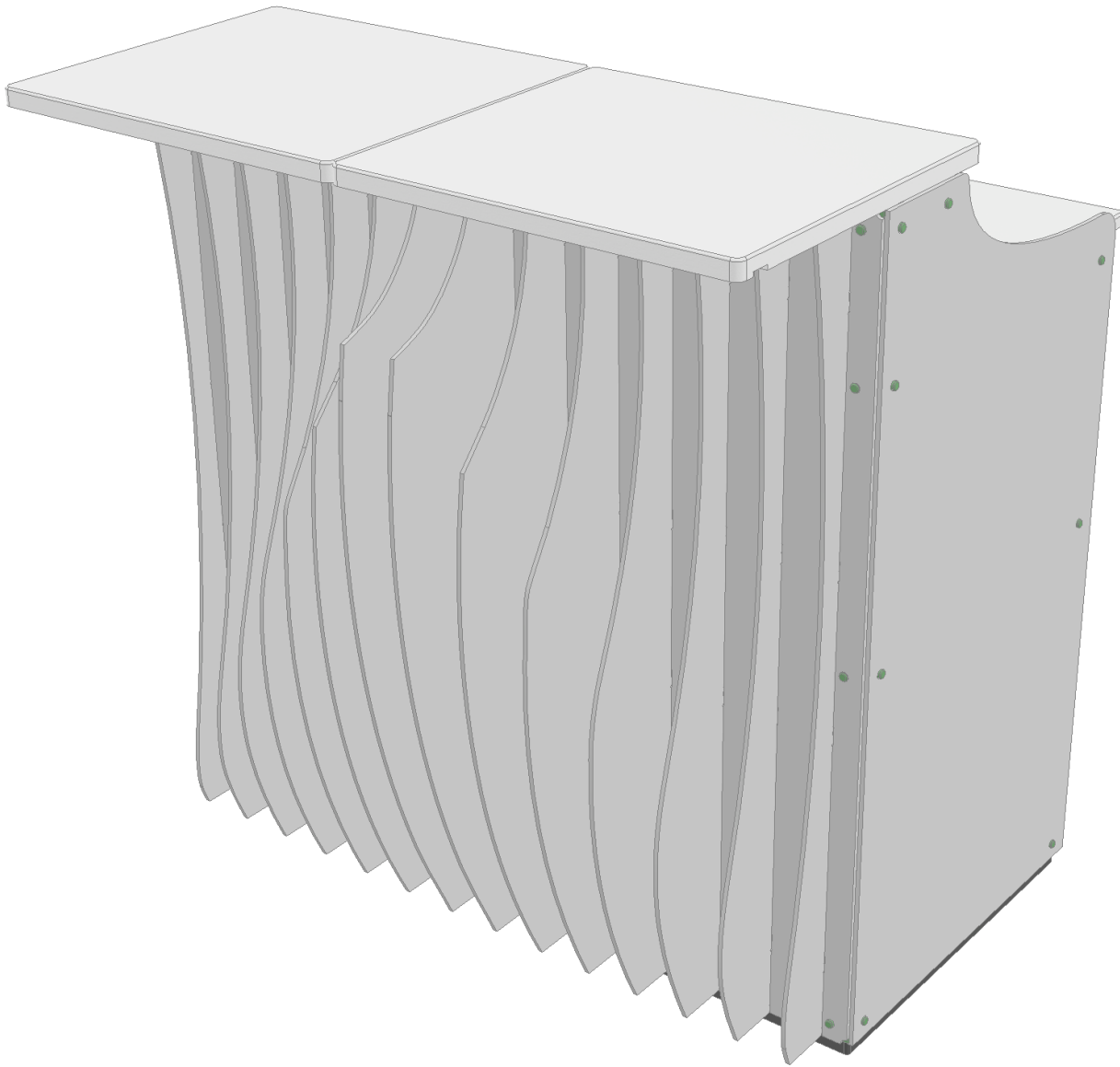


2-WIDE SLOTLOK VERSION

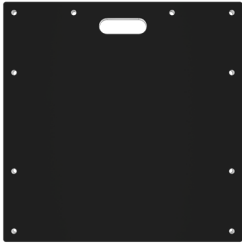


NOTE:

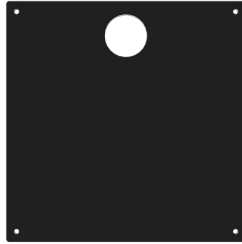
Actual product may vary. SuperLever panels are interchangeable and instructions show a product representation.

REVISION DATE: 05/14/26

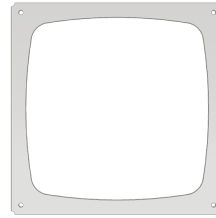
PANEL KEY



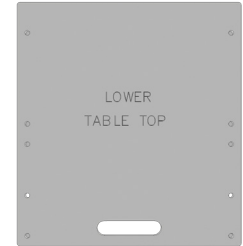
SUPERSHAPE BASE - (A)



INSIDE SHELF - (F)



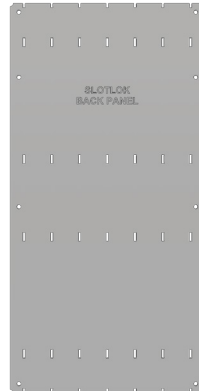
TUBE PANEL - (D)



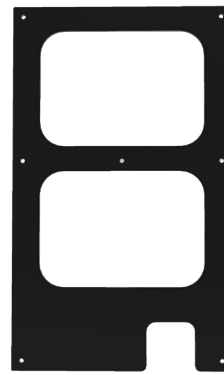
LOWER TABLE TOP - (G)



SIDE PANEL - (B)



SLOTLOK FRONT PANEL - (C)



REAR ACCESS PANEL - (E)



TOP ACCESS PANEL - (H)



UPPER TABLE TOP - (K)

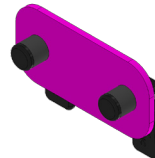
HARDWARE KEY



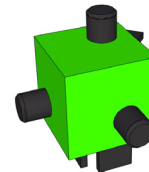
C2



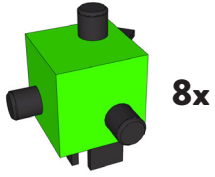
F4



F2



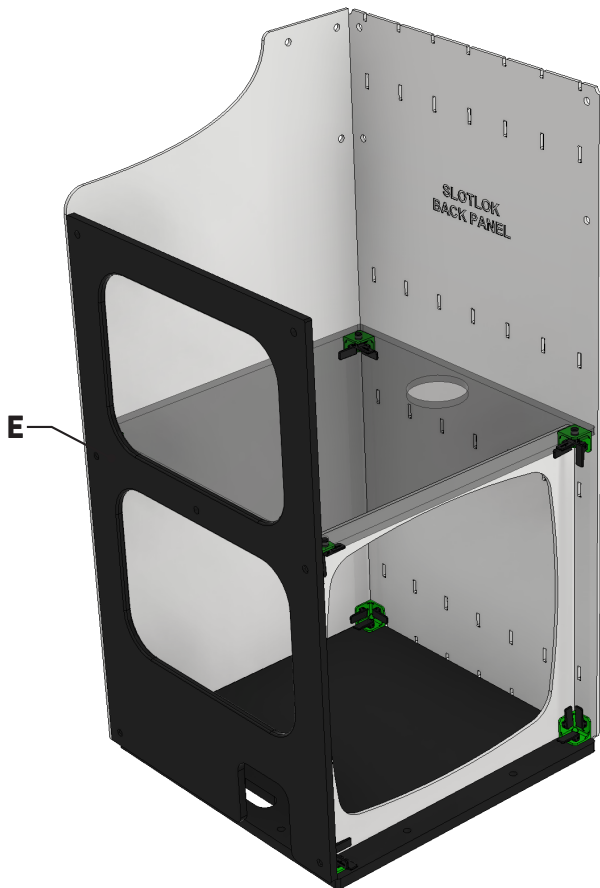
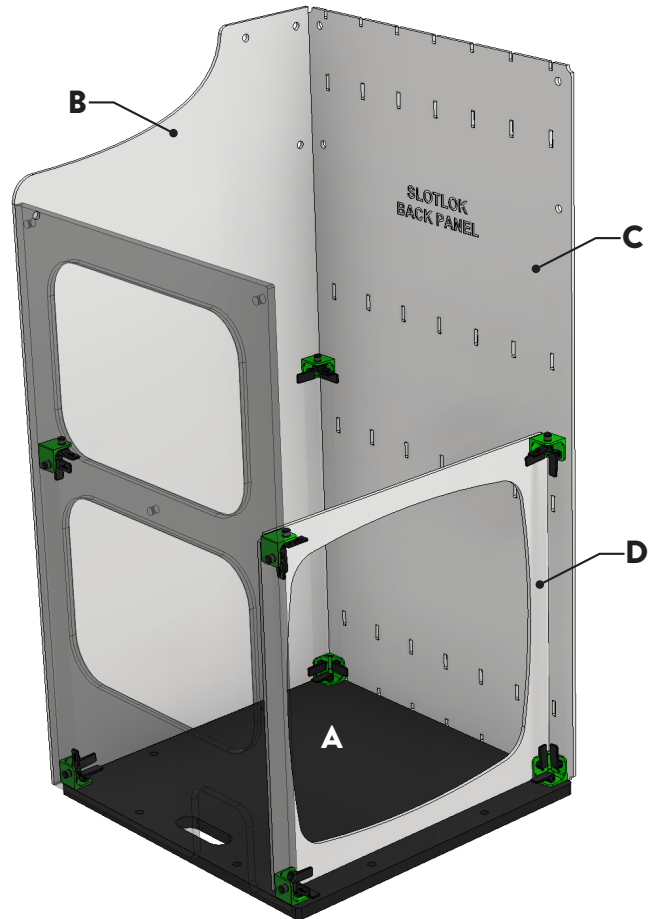
C3



8x

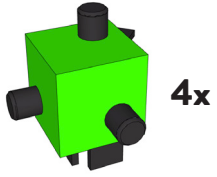
STEP ONE

- Set SuperBase (A) level on the ground.
- Attach **C3** connectors to all bottom corners of SuperBase.
- Attach side (B), front (C) and Tube (D) panels to SuperBase by using **C3** connectors to secure in position.



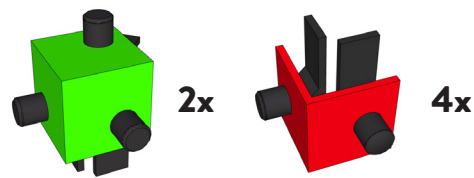
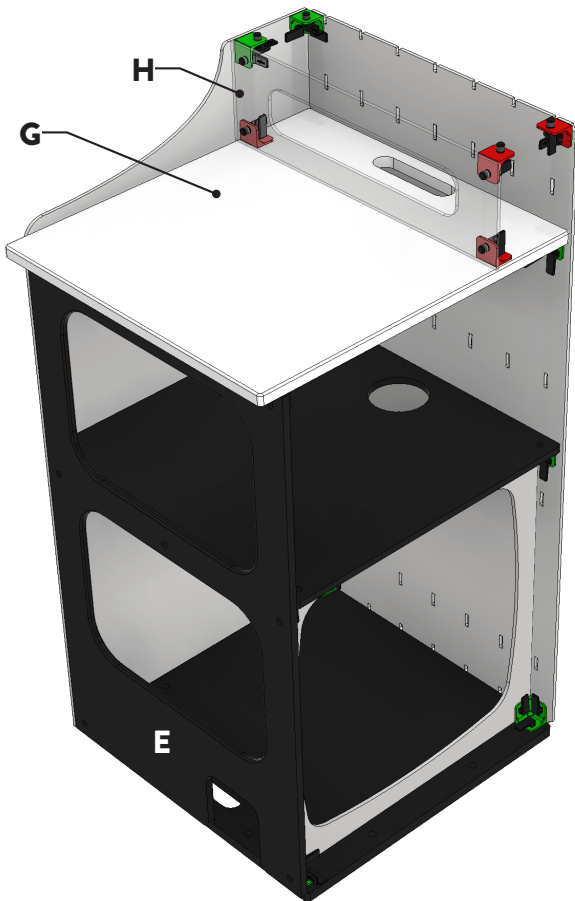
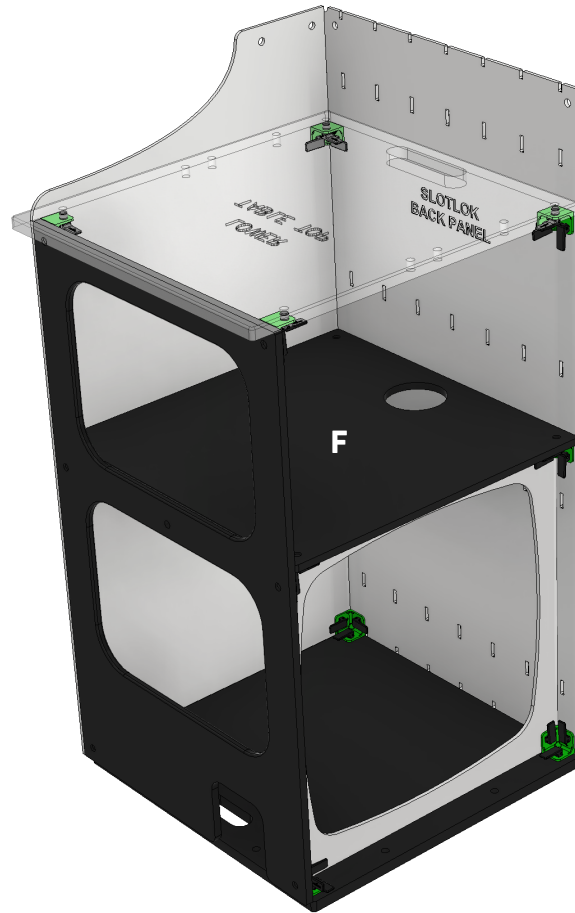
STEP TWO

- Attach rear access panel (E) to the SuperBase with **C3** connectors and engage levers to lock in place.



STEP THREE

- Drop the shelf panel (F) into the unit from the top, with cord holes facing the front.
- Engage the levers to lock the shelf in place.
- Attach **C3** connectors to upper open holes in panels at each corner.

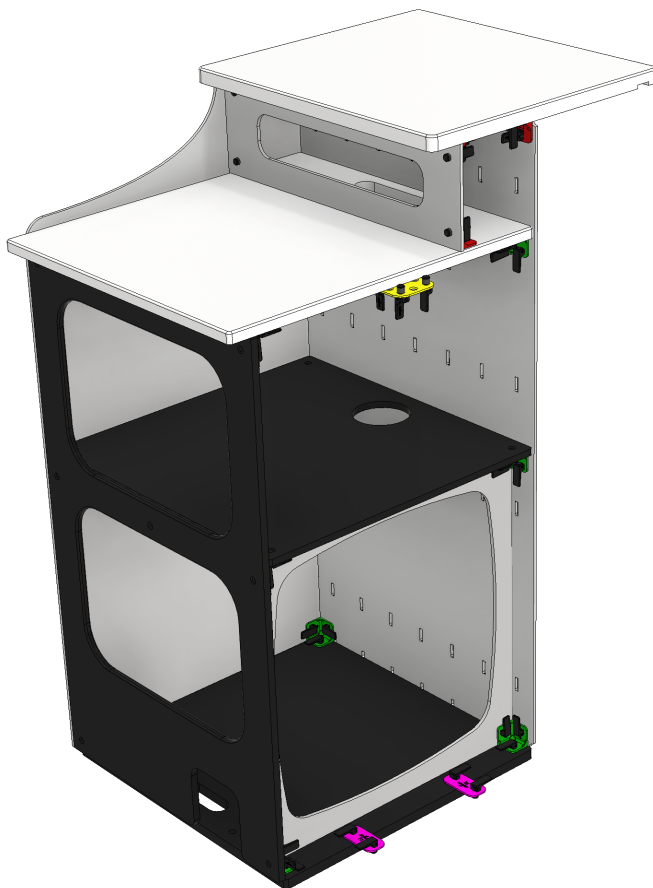
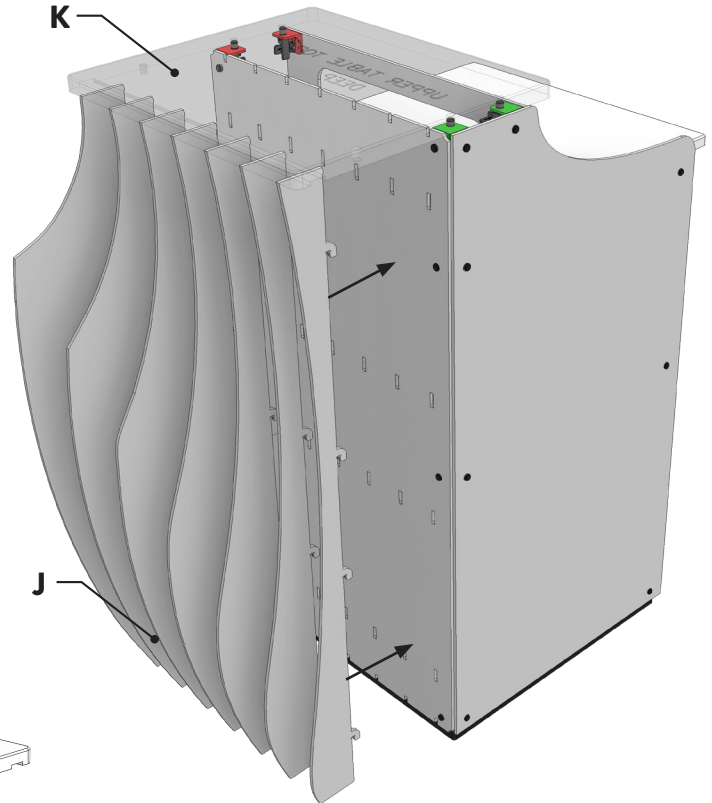


STEP FOUR

- Drop the lower table top (G) into place and engage the levers to lock in place.
- Attach **C2** and **C3** connectors on the lower top, front, and side panels.
 - Secure access panel (H) using connectors.

STEP FIVE

- Insert SlotLok Inserts (J) to the SlotLok back panel.
- Secure the upper top (K) to complete the section using the **C2** and **C3** connectors.

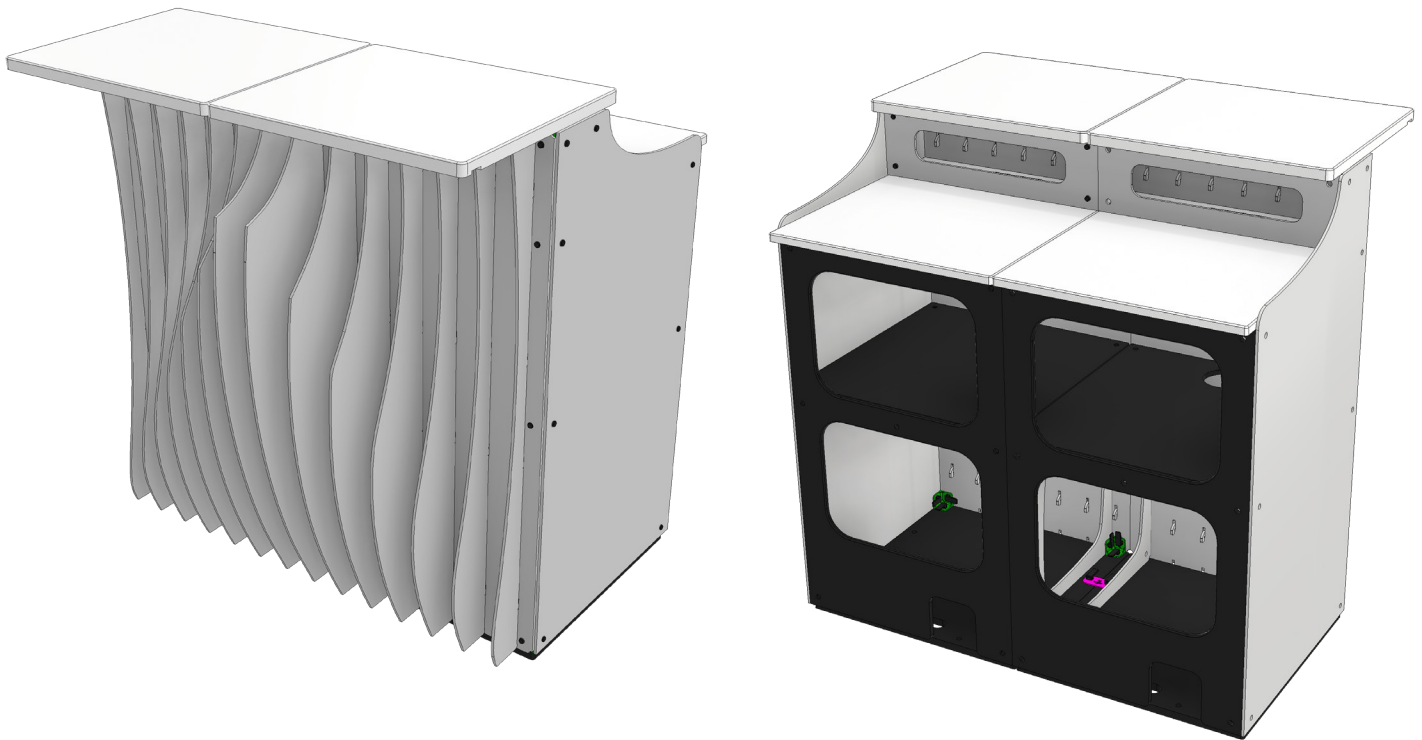


STEP SIX

Connect the **F4** connector to the underside of the tabletop panels and **F2** connector to the SuperBase.

STEP SEVEN

Repeat steps as necessary for adding more sections to the desk. Use the **F4** connector and **F2** connector to connect the sections together securely.



NOTE: Check all panels are securely latched at completion.

MAX WEIGHTS: Upper Top = 25lbs, Lower Top = 25lbs, Shelf = 25lbs

WARNING: This desk is designed for its intended use only.

Do not sit, stand, climb, or place body weight on any part of the desk.

DISASSEMBLY INSTRUCTIONS:

Registration Desk *MUST* be disassembled from top down, in reverse order as the instructions listed. Removal of bottom panels first may result in toppling of the Desk.