



NOTE:

Actual product may vary. SuperLever panels are interchangeable and instructions show a product representation.

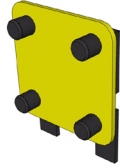
The Instructions reflect building the arrow from the backside

REVISION DATE: 11/24/25

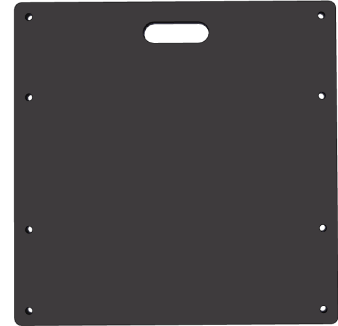
HARDWARE KEY



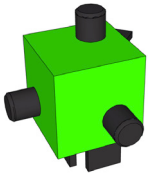
C2



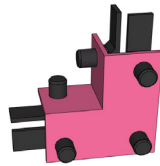
F4



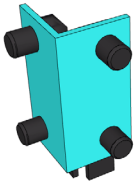
SUPERSHAPE BASE



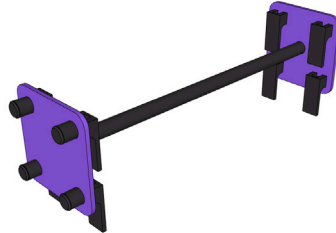
C3



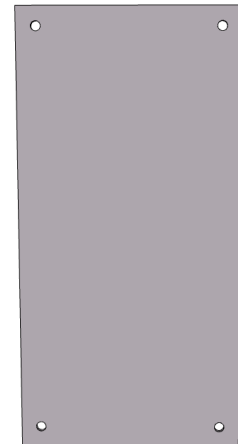
C5



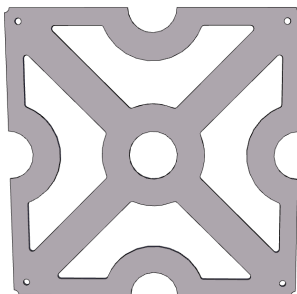
C4



DOGBONE



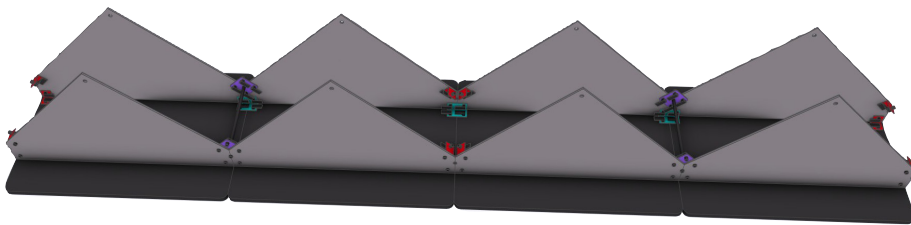
HALF PANEL



SUPERPANEL (TESSERAE)

STEP ONE

- Place SuperShape bases on the ground.
- Connect them using C4s.
- Install C3s on the edges.

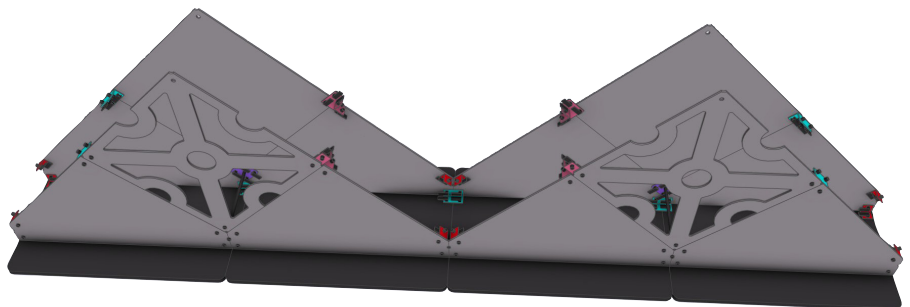


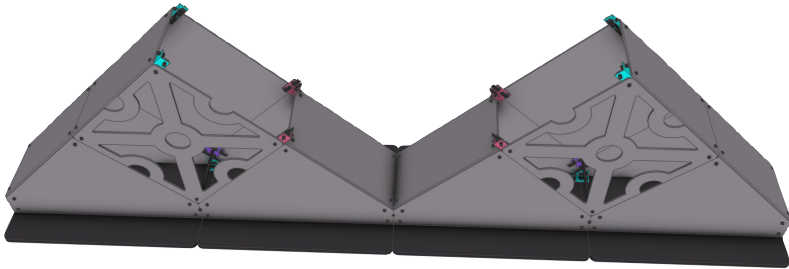
STEP TWO

- Attach risers on the opposite handle side and handle side.
- Attach dog bones connecting the 1st and 2nd risers, as well as the 3rd and 4th risers.
- Connect the 2nd and 3rd risers with CSL and CSR.
- Connect C2s on both ends of the risers.

STEP THREE

- Attach C4s to the tops of risers 1 and 4.
- Attach C5s to the tops of risers 2 and 3.
- Attach the panel of choice between risers 1 and 4, and between risers 2 and 3.



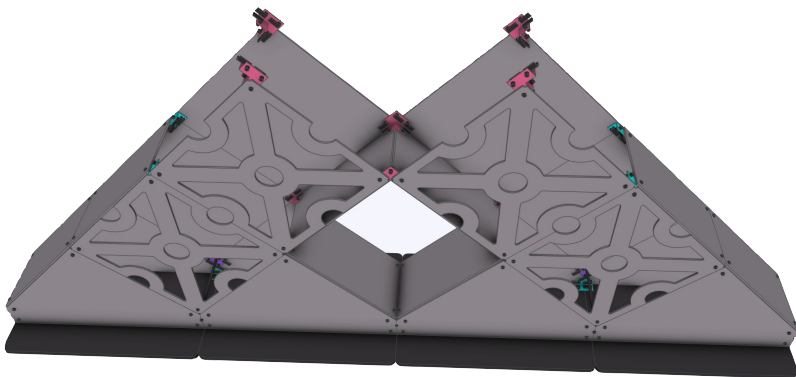
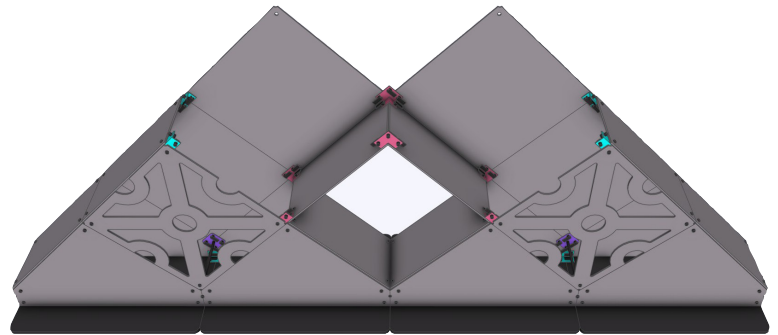


STEP FOUR

- Attach half panels on the C5s of risers 2 and 3.
- Add half panels on the perimeter of the build, connecting to C2s on the outermost side of the risers.
- Use C4s to connect half panels to the panels of choice.

STEP FIVE

- Attach half panels to C5s on the inside of the build.
- Lock in place with C5s on top.
- Attach panels to C4s and C5s.

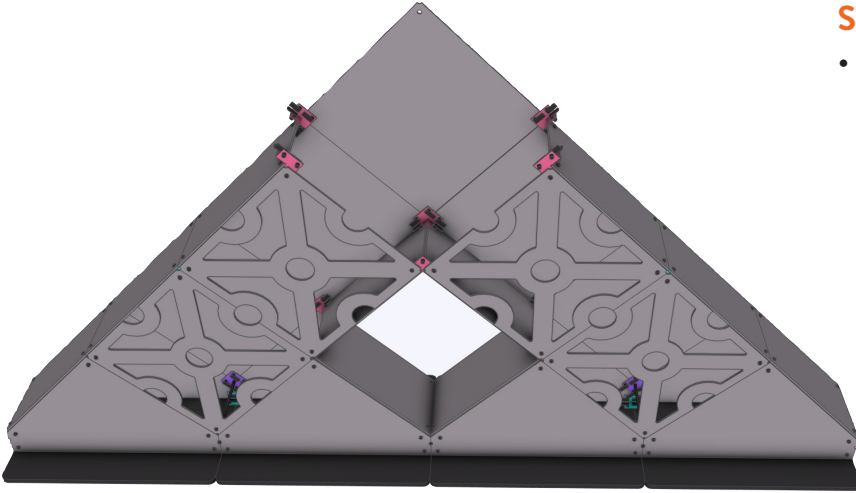


STEP SIX

- Attach panels of choice to C4s and C5s.
- Add C5s to both sides (top).

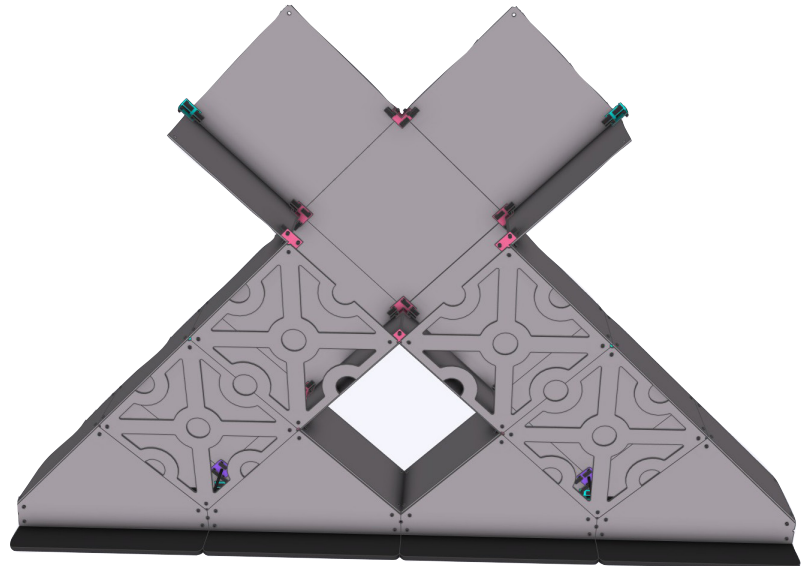
STEP SEVEN

- On one side, add panel and connect it to C5s.



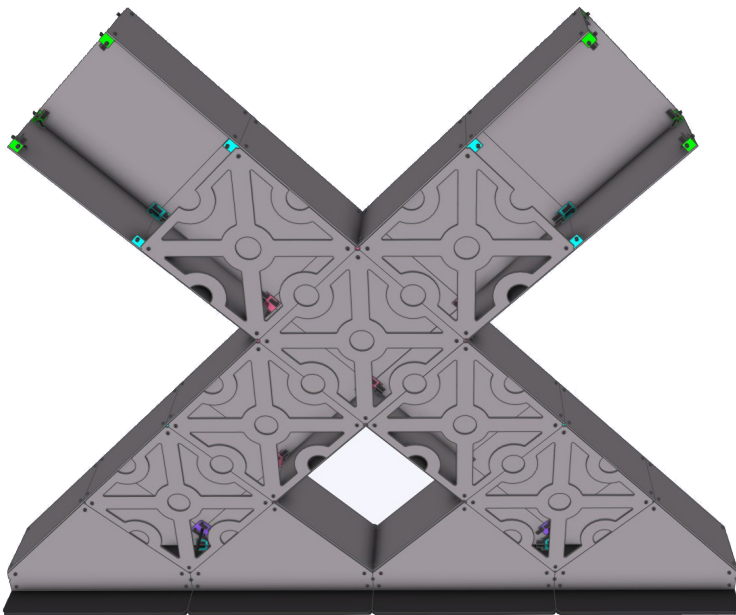
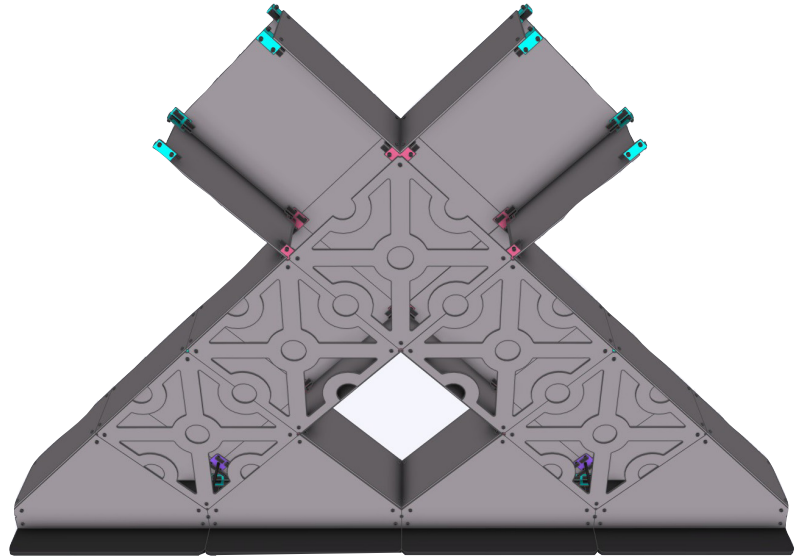
STEP EIGHT

- Attach C5s to the top holes as shown.
- Connect half panels to C5s, then attach a C4 connecting the half panel to the panel of choice (both sides).



STEP NINE

- Add both half panels to C5s, then attach C4s to each corner as shown.
- Add SuperPanel with design of choice to front C5s.



STEP TEN

- Add half panels to the top and bottom sides of C4s as shown.
- Attach full-size panels to one side, leaving an opening in the face.
- Then add C3s to all corners through the open face.
- Add SuperPanels with design to C5s and c4s.

STEP ELEVEN

- Add the missing face and secure it.
- Add the final half panel to enclose and finish the build.



NOTE: The last half panels may not be able to be latched.

DISASSEMBLY INSTRUCTIONS:

SuperShape *MUST* be disassembled from top down, in reverse order as the instructions listed. Removal of bottom panels first may result in toppling of the SuperShape.