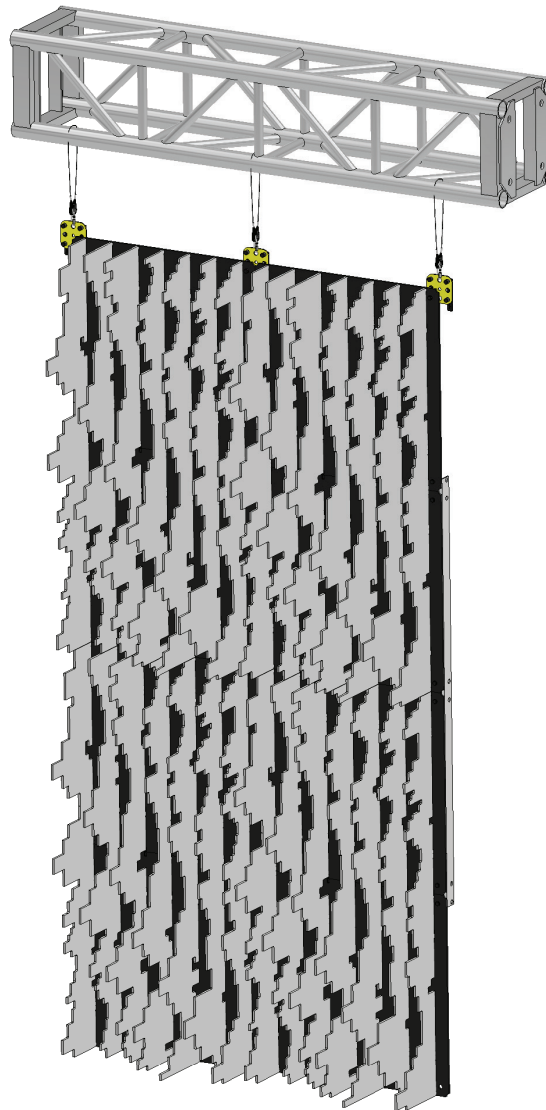


SLOTLOK 2 x 4 PANEL BUILD SHOWN

NOTE:

Actual product layout may vary. Hanging SlotLok is expandable and instructions show a product representation of available design options.



SETUP + PREP

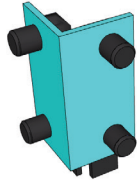
- Ensure all components, connectors, and cables are present before installation.
- Verify truss structure is rated for load and properly secured.
- Identify panel layout (width x height) and corresponding hang rail configuration.
- Keep all SuperLever connectors in the unlocked position before insertion

REVISION DATE: 05/26/26

HARDWARE KEY



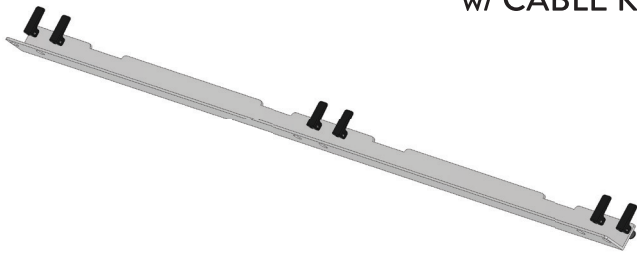
F2



C4

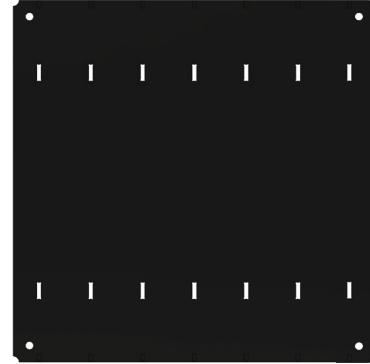


F4
w/ CABLE KIT



3G - HANG RAIL
(EF2-3G)

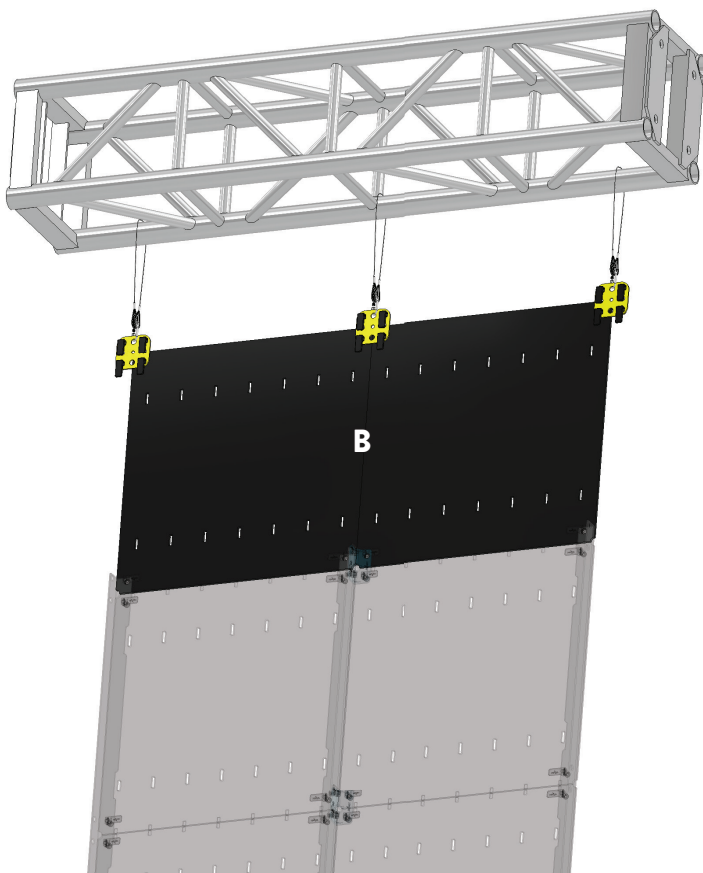
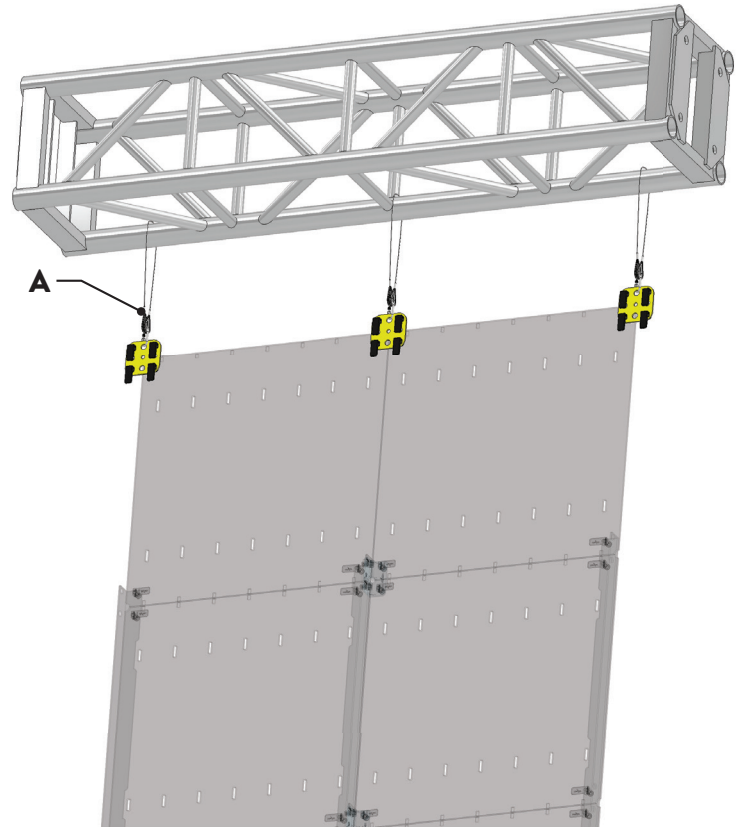
PANEL KEY



SLOTLOK BACKING PANEL
(BLACK or GRAY)

STEP ONE

- Install **F4** with Hang Cable Kit **(A)** at required suspension points.
- Use quick links to secure cables at desired height around truss or pipe structure.
- Space cables every 22.5" to match panel layout width.



STEP TWO

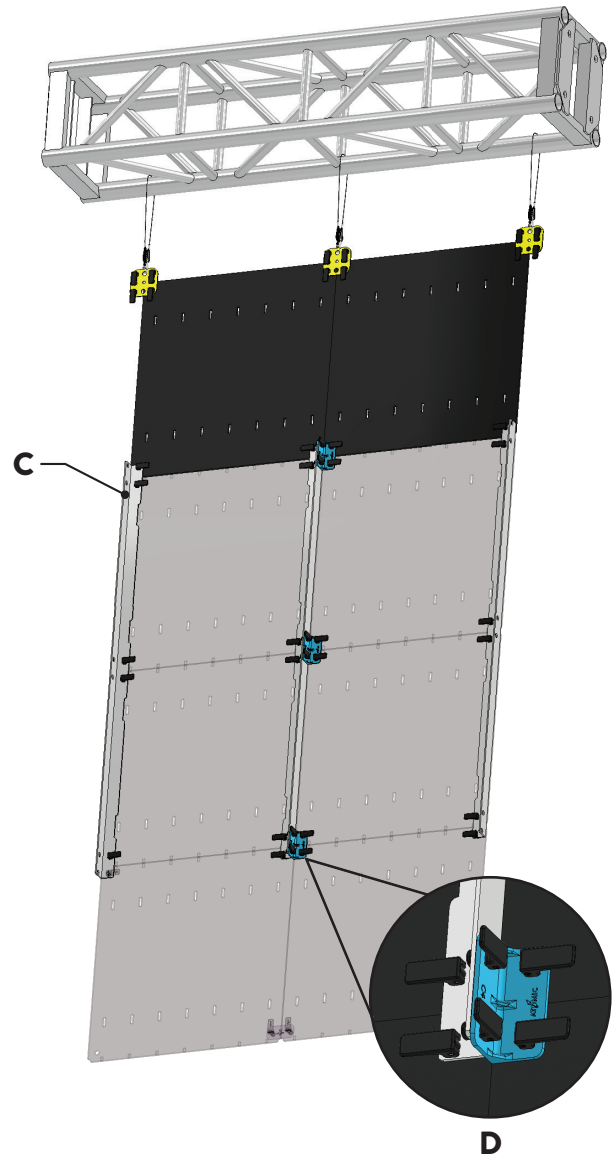
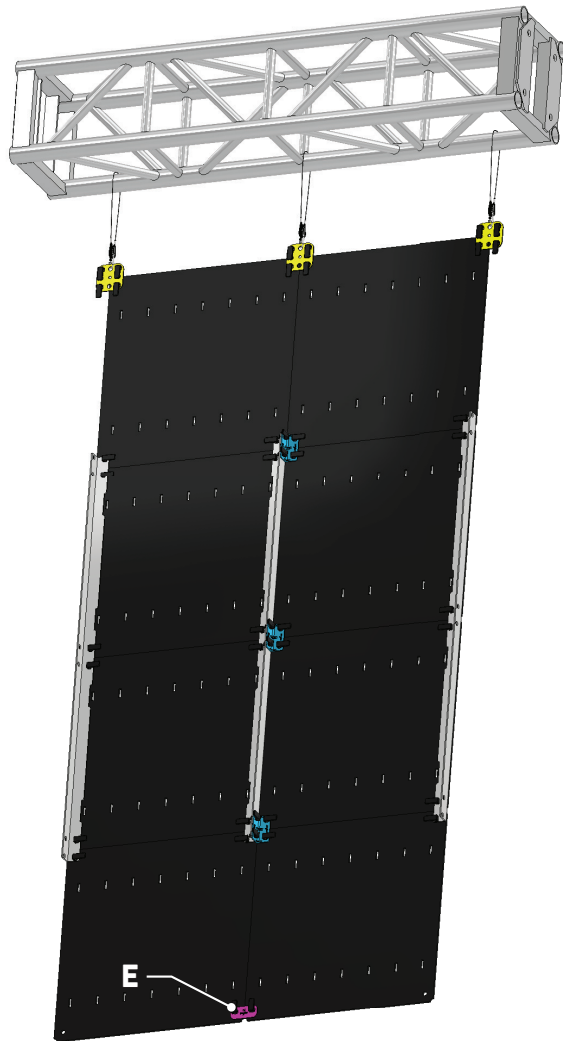
- Attach SlotLok panels **(B)** to the **F4** connectors by securing SuperLever to the locked position.
- Ensure panels are level and all cables are evenly tensioned before proceeding.

NOTE:

- SlotLok backing panels have slight indentations along their top and bottom edge to align the SlotLok Inserts. **Make sure these facing out. Slots should also always be vertical.**

STEP THREE

- Install 3G Hang Rail **(C)** at the bottom of the first row of panels.
- Add **C4** connectors **(D)** onto 3G where required.



STEP FOUR

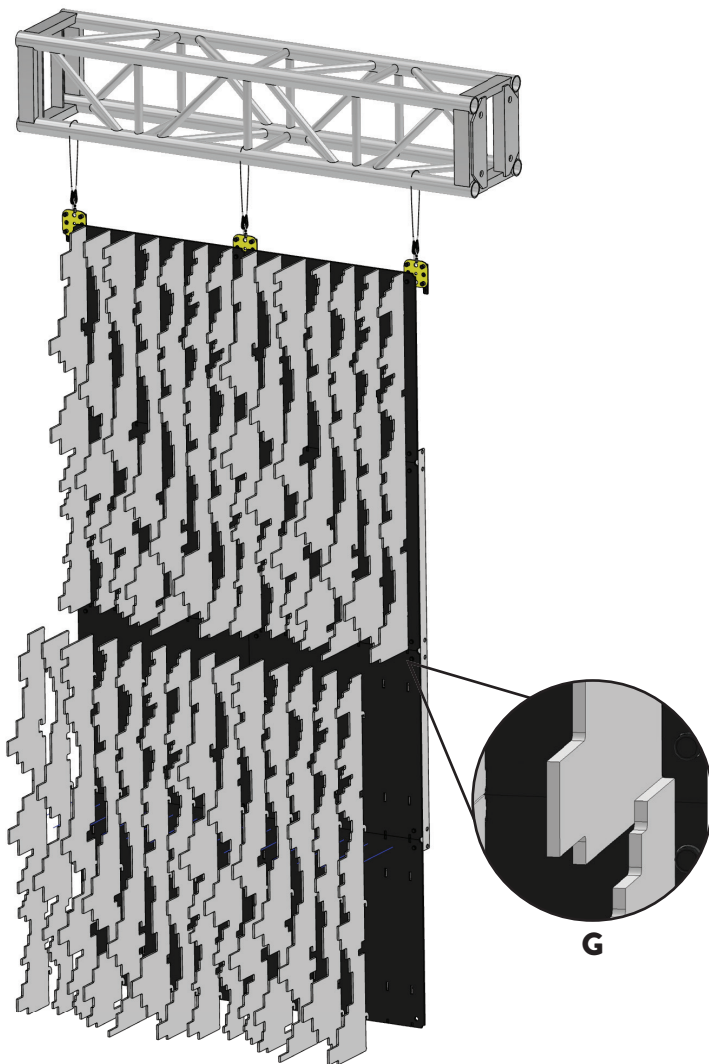
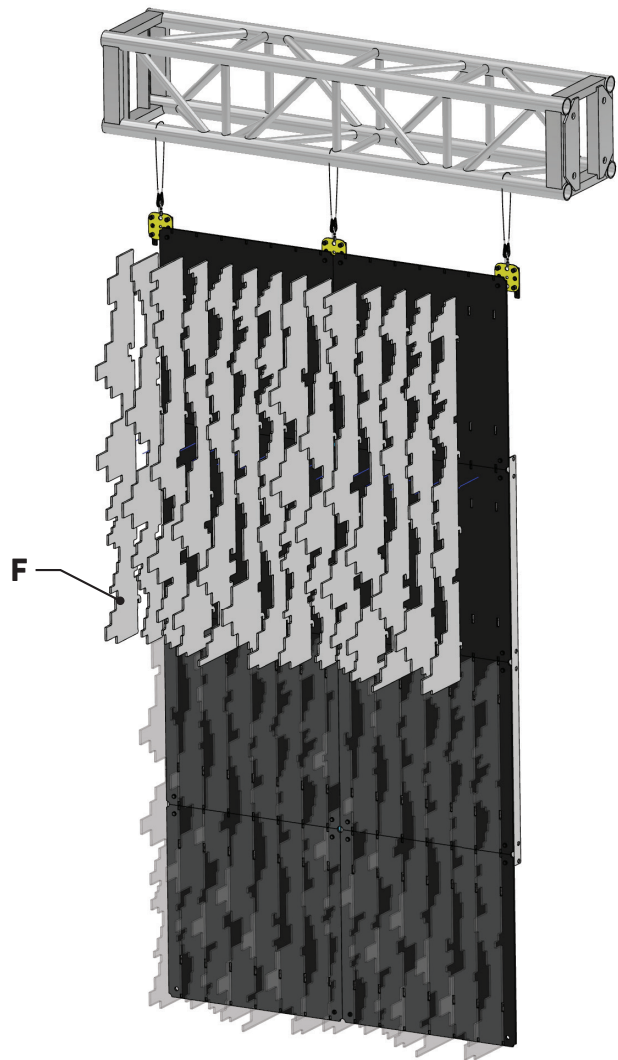
- Lift SlotLok back panels into position.
- Secure panels by engaging SuperLever connectors.
- Continue installing panels horizontally across, and then down the structure.
- Add **F2** **(E)** to bottom row panels.

STEP FIVE

- Add SlotLok inserts (**F**) into position starting from one side at a time, following the desired design layout for the insert pattern.

Is a lift or ladder available?

- **YES** - Build the whole backing panel backdrop, add the inserts starting at the bottom, working toward the top.
- **NO** - Starting from the top, attach inserts into each section of backing panes as the backdrop is raised.



NOTE:

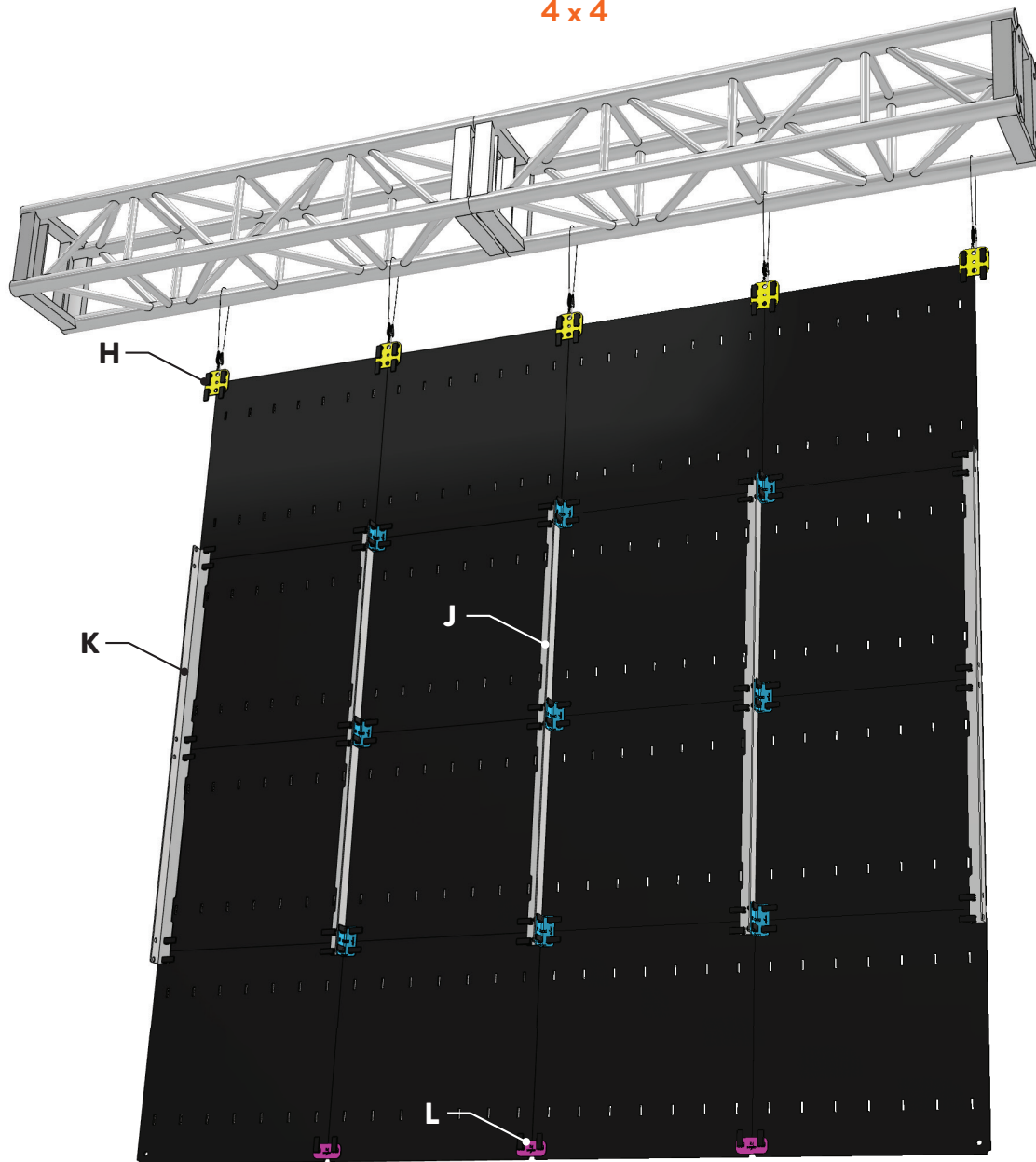
- Gently “snap” in the inserts.
- You may have to slightly offset (**G**) the very top of the lower insert in order to insert it into the back panel.
- **Make sure each insert is fully engaged into the back panel before moving on to the next row.**

SLOTLOK LAYOUT EXAMPLES

When backdrop width increases:

- (H) - Add **F4**s with cable kit across each section of top panels
- (J) - Add required 3G with **C4** connectors to every section as needed.
- (K) - Both backdrop ends should only use a 3G without **C4**s.
- (L) - Note that lower panel connectors **F2** / **F4** slightly vary across the layouts.

4 x 4

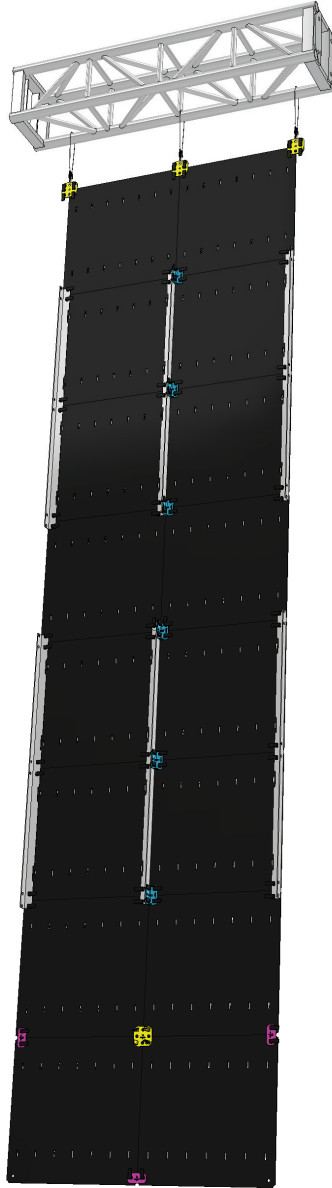


SLOTLOK LAYOUT HEIGHT EXAMPLES

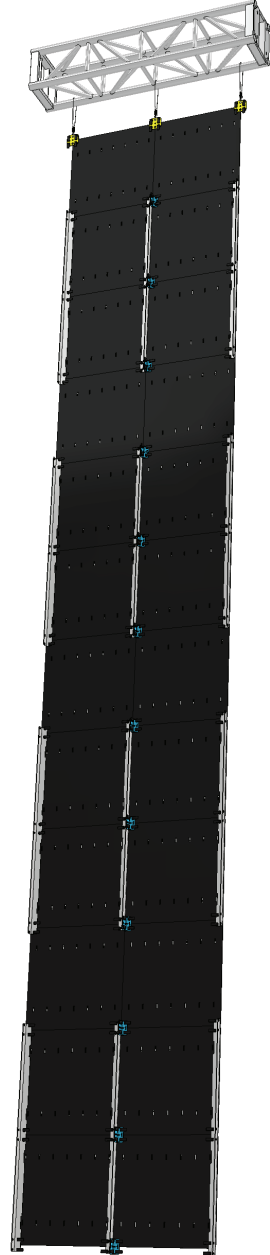
2 x 6



2 x 8



2 x 12



DISASSEMBLY INSTRUCTIONS:

SlotLok **MUST** be disassembled by removing SlotLok inserts first, then removing back panels, then the connectors in reverse order as the instructions listed. Removal of top panels first may result in toppling of the structure.