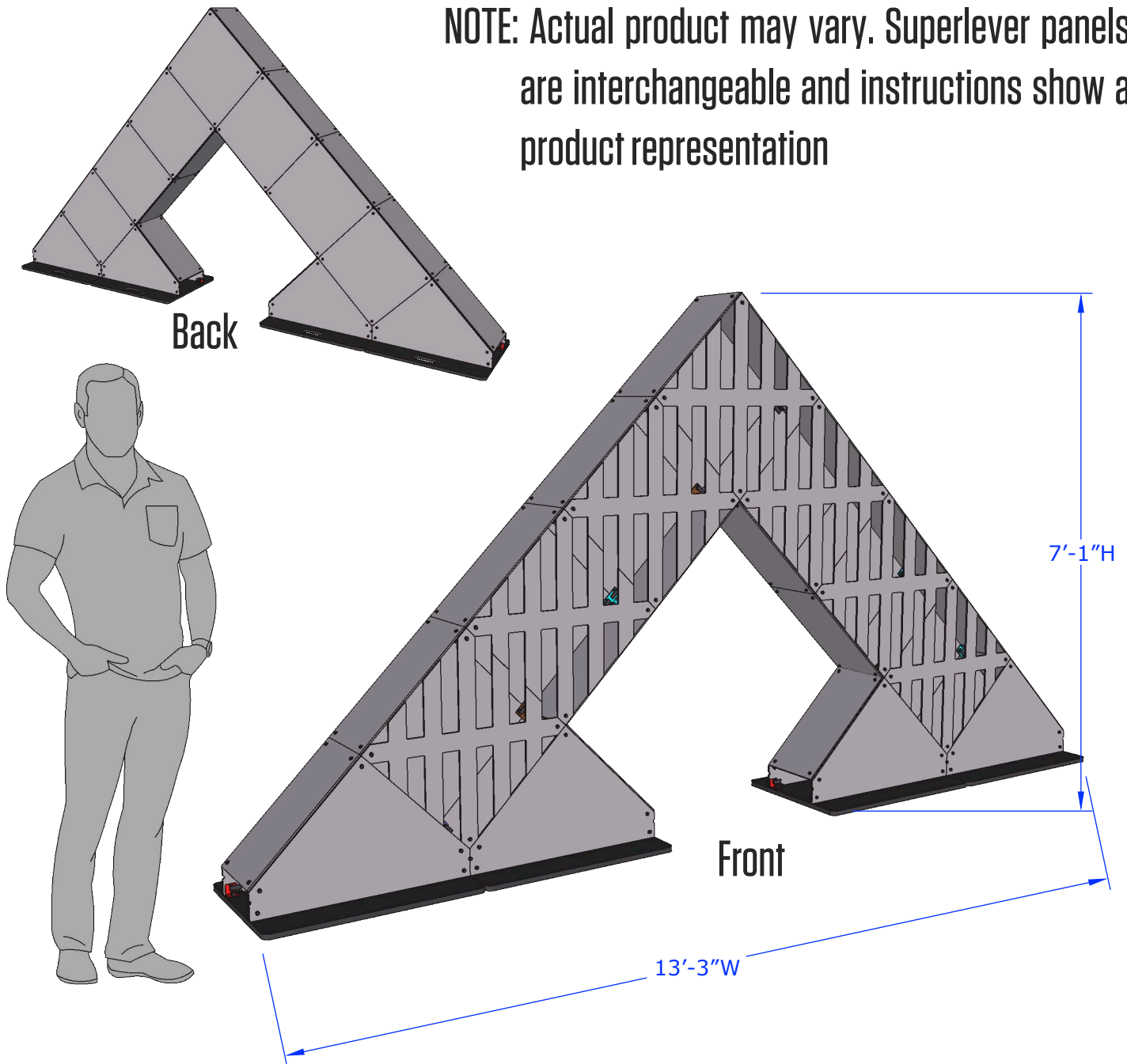


**NOTE:** Actual product may vary. Superlever panels are interchangeable and instructions show a product representation



QUESTIONS ABOUT ATOMIC PRODUCTS? GIVE US A RING!

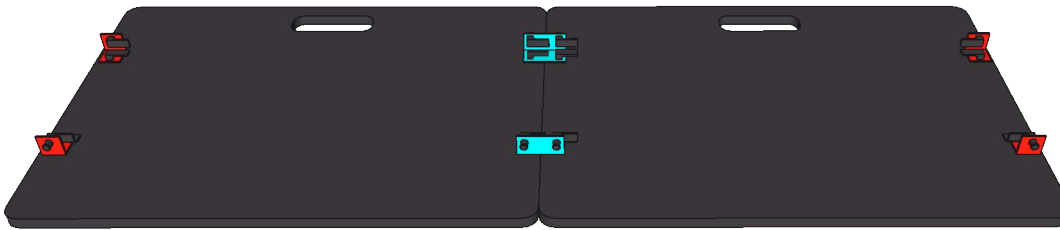
717-626-4408

<https://www.atomicdesign.tv/>

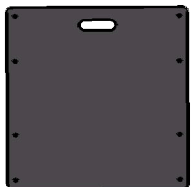
STEP 1: Align SuperShape base with handles facing the back of the SuperShape and white feet facing down.



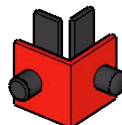
STEP 2: Connect bases together using C4 connectors as shown. Attach C2 Connectors on either side of base set up as shown



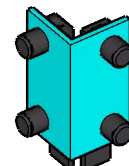
### HARDWARE KEY



SUPERSHAPE BASE



C2



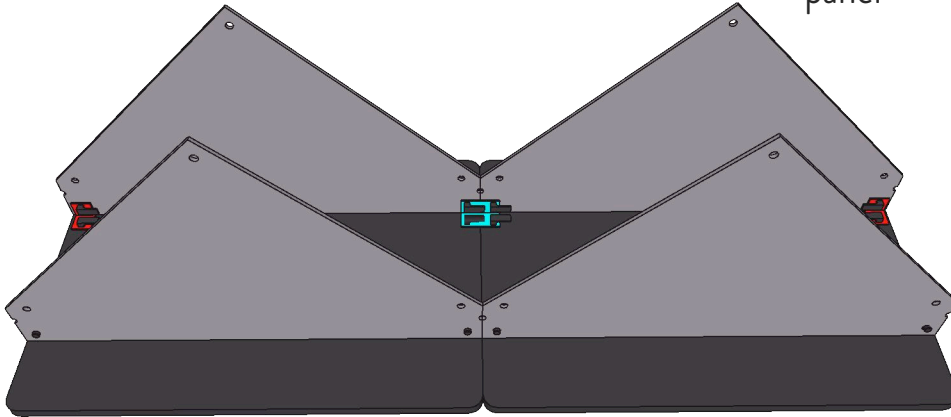
C4

QUESTIONS ABOUT ATOMIC PRODUCTS? GIVE US A RING!

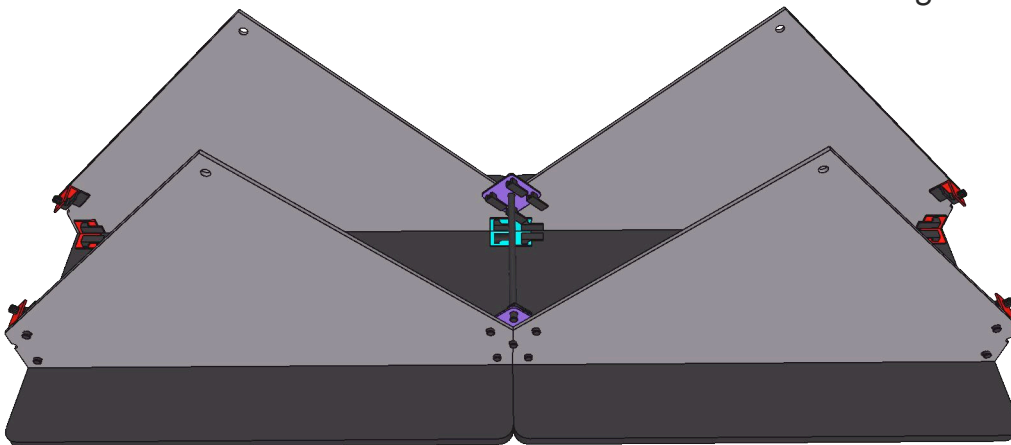
717-626-4408

<https://www.atomicdesign.tv/>

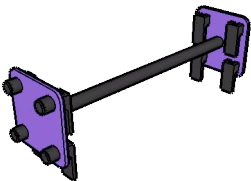
## STEP 3: Attach SuperShape riser panel



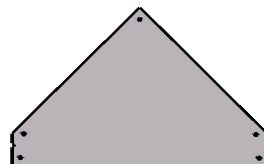
## STEP 4: Attach C2 connectors to the outer edge of the riser panels and Dogbone connector as shown



## HARDWARE KEY



DOGBONE



SUPERSHAPE  
RISER PANEL

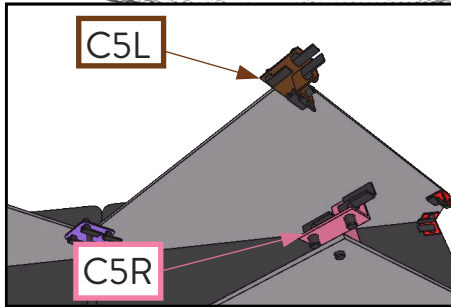


C2

QUESTIONS ABOUT ATOMIC PRODUCTS? GIVE US A RING!

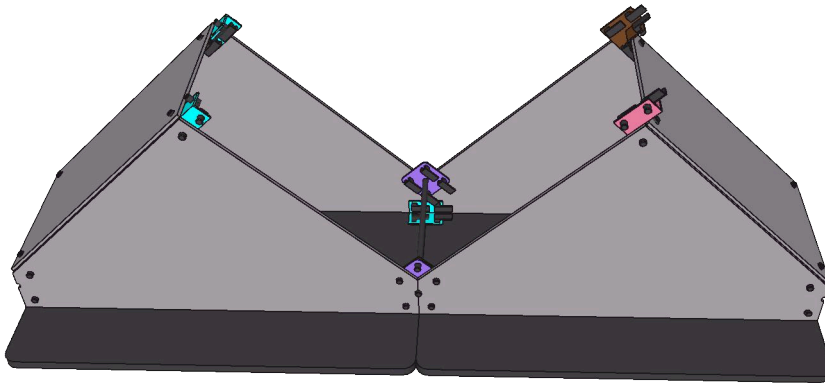
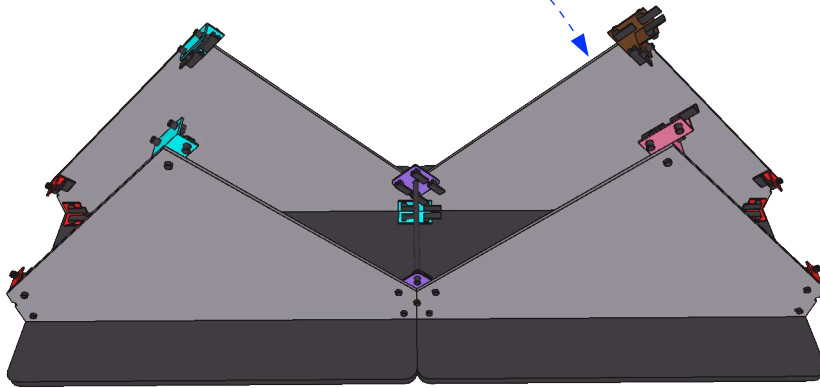
717-626-4408

<https://www.atomicdesign.tv/>



STEP 5: On outer edge of bridge attach C4 connectors

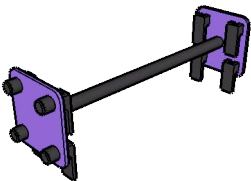
STEP 6: On inner edge of Peak attach C5 R and C5 L connectors as shown



STEP 7: Attach Half panels to connectors as shown

Note: If using internal lighting, it is recommended to place fixtures between SuperShape risers now and run cabling between the front and back riser

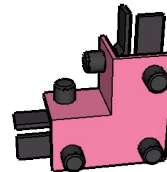
## HARDWARE KEY



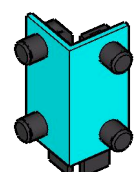
DOGBONE



C5L



C5R

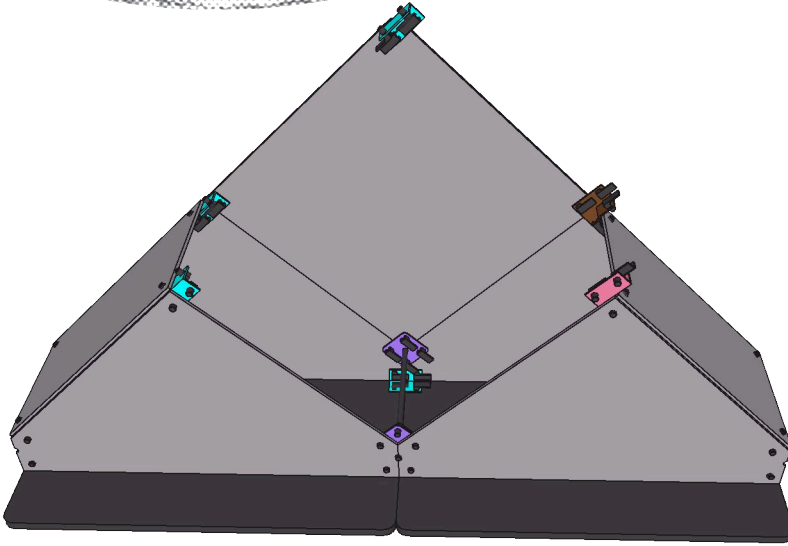


C4

QUESTIONS ABOUT ATOMIC PRODUCTS? GIVE US A RING!

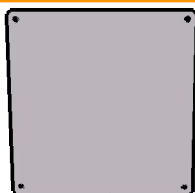
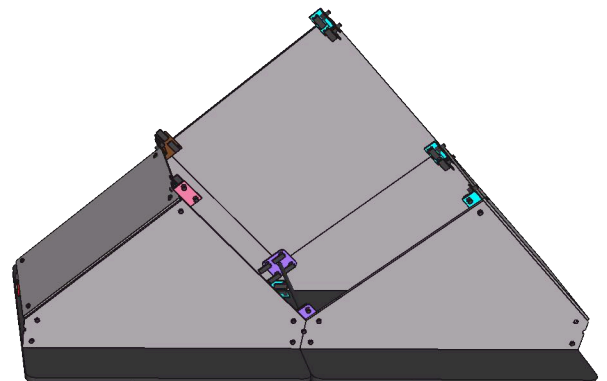
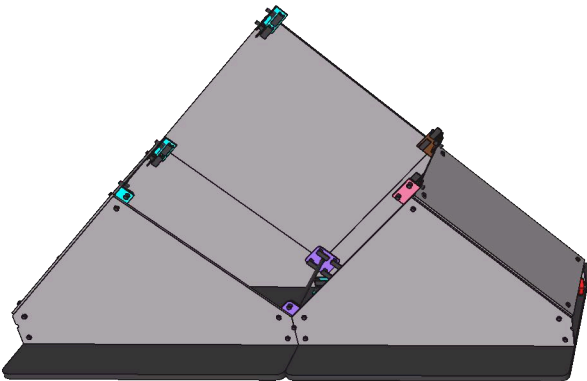
717-626-4408

<https://www.atomicdesign.tv/>



STEP 8: Attach Propane Panel to back of Peak as shown, with C4 connector attached to top of panel to indicate direction of Peak

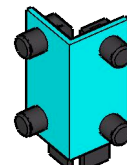
STEP 9: Align both sets of bases into position



PROPANE PANEL

Panels may vary depending on panel selected for job

HARDWARE KEY



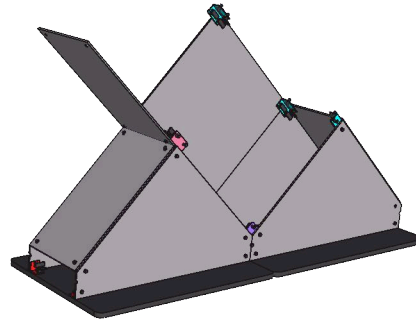
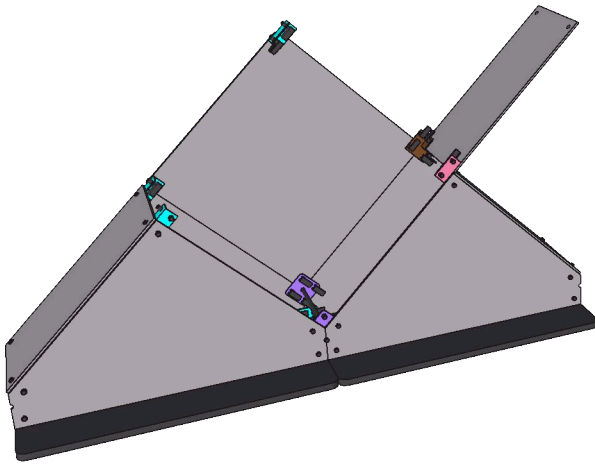
C4

QUESTIONS ABOUT ATOMIC PRODUCTS? GIVE US A RING!

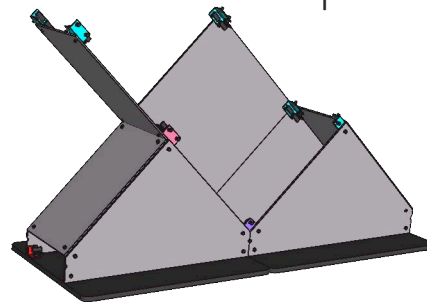
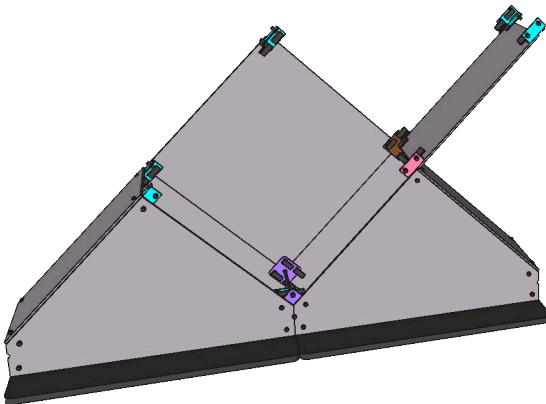
717-626-4408

<https://www.atomicdesign.tv/>

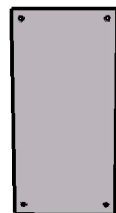
## STEP 10: Attach half panels to C5 Connectors



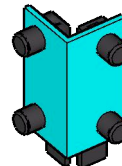
## STEP 11: Attach C4 Connectors to ends of half panel



## HARDWARE KEY



HALF PANEL



C4

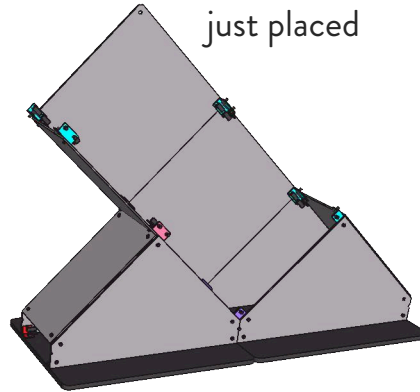
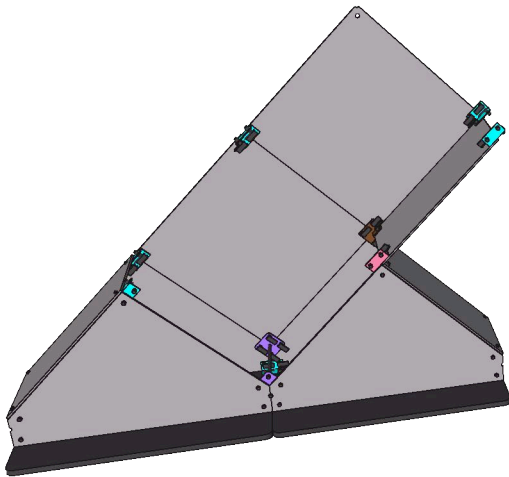
QUESTIONS ABOUT ATOMIC PRODUCTS? GIVE US A RING!

717-626-4408

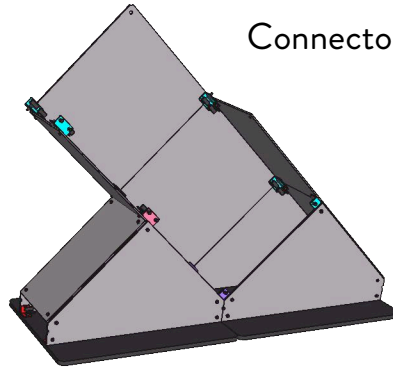
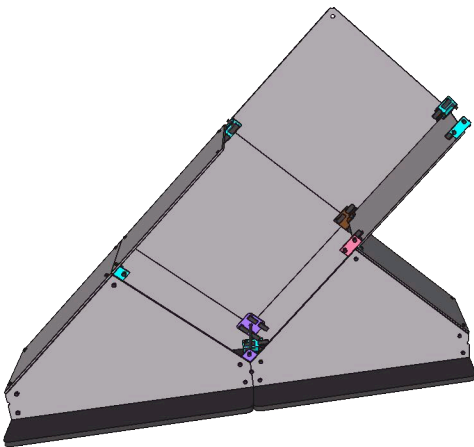
<https://www.atomicdesign.tv/>



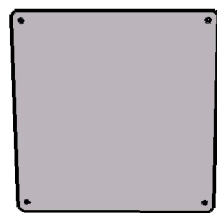
STEP 12: Attach SuperLever Panel on back of Peak to half panel that was just placed



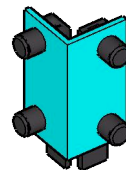
STEP 13: Attach Additional C4 Connectors to added panel



### HARDWARE KEY



SUPER LEVER PANEL



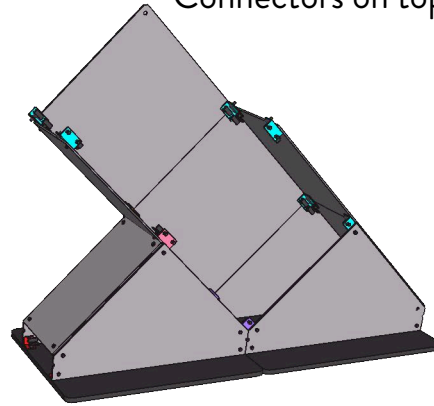
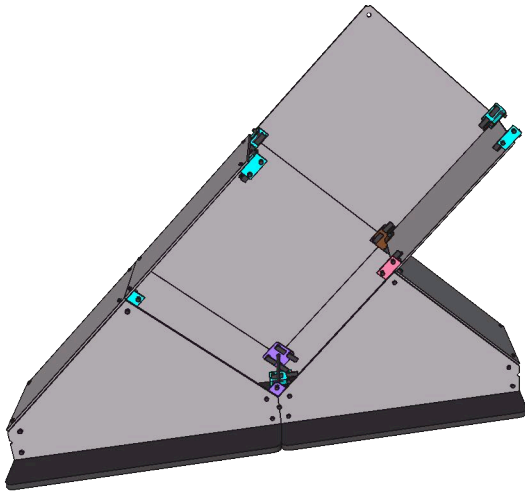
C4

QUESTIONS ABOUT ATOMIC PRODUCTS? GIVE US A RING!

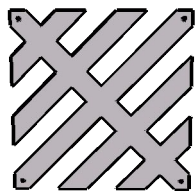
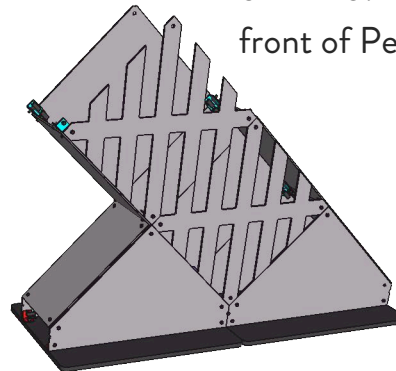
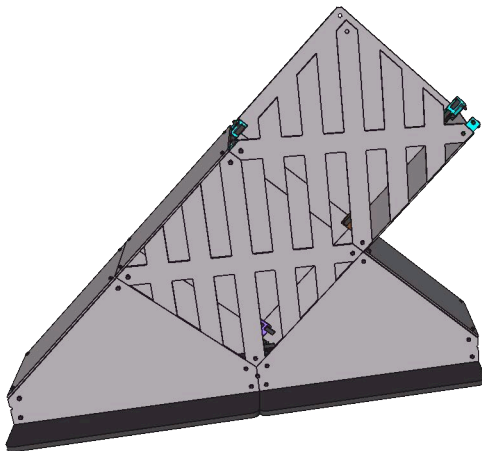
717-626-4408

<https://www.atomicdesign.tv/>

### STEP 14: Attach Half panels on C4 Connectors on top side of bridge



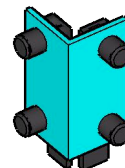
### STEP 15: Attach SuperLever panels to front of Peak



COMB PANEL

Panels may vary depending on panel selected for  
job

### HARDWARE KEY



C4

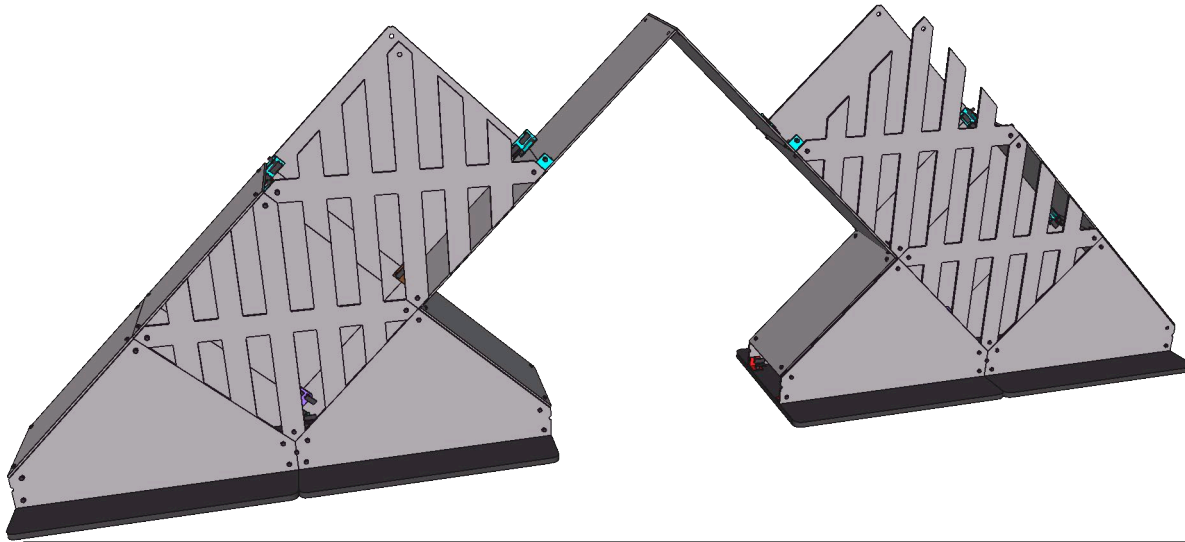
QUESTIONS ABOUT ATOMIC PRODUCTS? GIVE US A RING!

717-626-4408

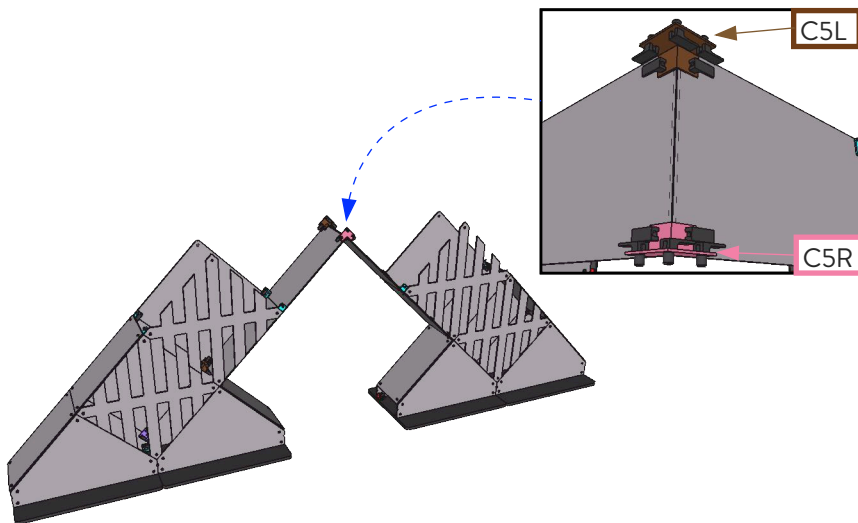
<https://www.atomicdesign.tv/>



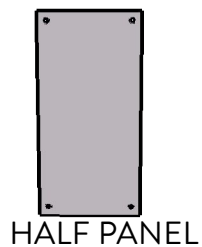
STEP 16: Attach Half panels on C4  
Connectors on top side of Peak



STEP 17: Connect Half panel together  
with C5R and C5L connectors



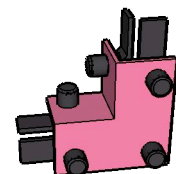
## HARDWARE KEY



HALF PANEL



C5L



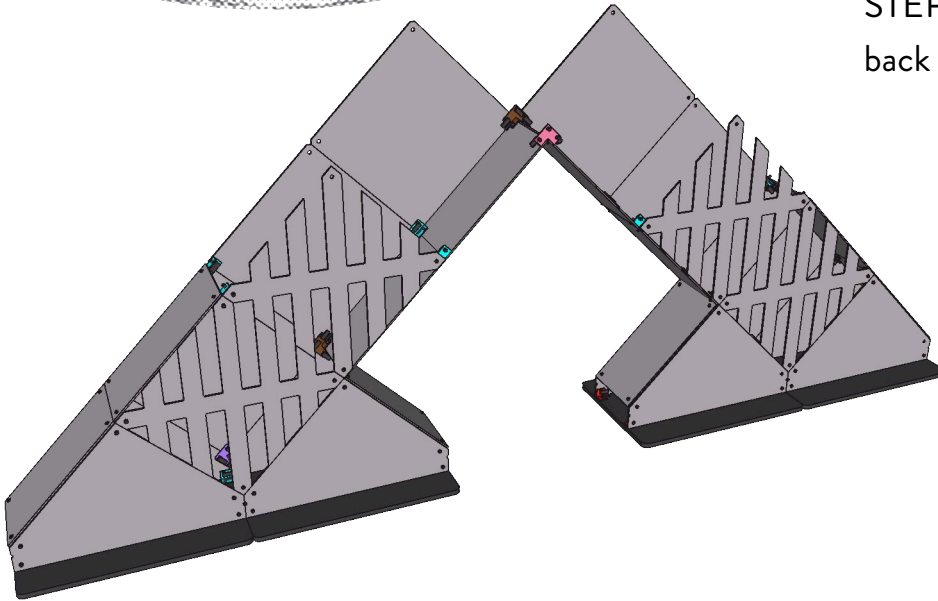
C5R

QUESTIONS ABOUT ATOMIC PRODUCTS? GIVE US A RING!

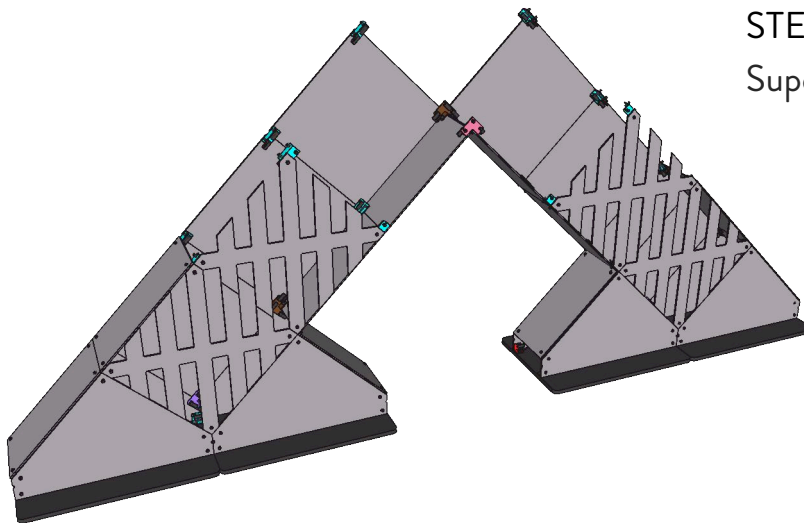
717-626-4408

<https://www.atomicdesign.tv/>

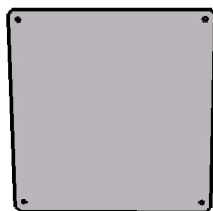
STEP 18: Attach SuperLever Panel on  
back of Peak as shown



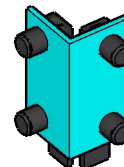
STEP 19: Attach C4 Connectors to  
SuperLever Panel as shown



## HARDWARE KEY



SUPER LEVER PANEL



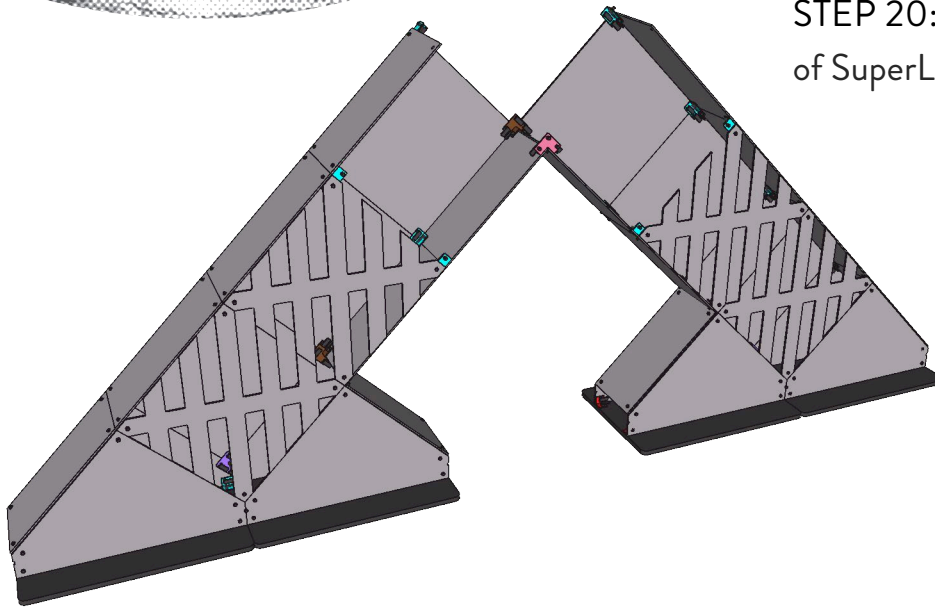
C4

QUESTIONS ABOUT ATOMIC PRODUCTS? GIVE US A RING!

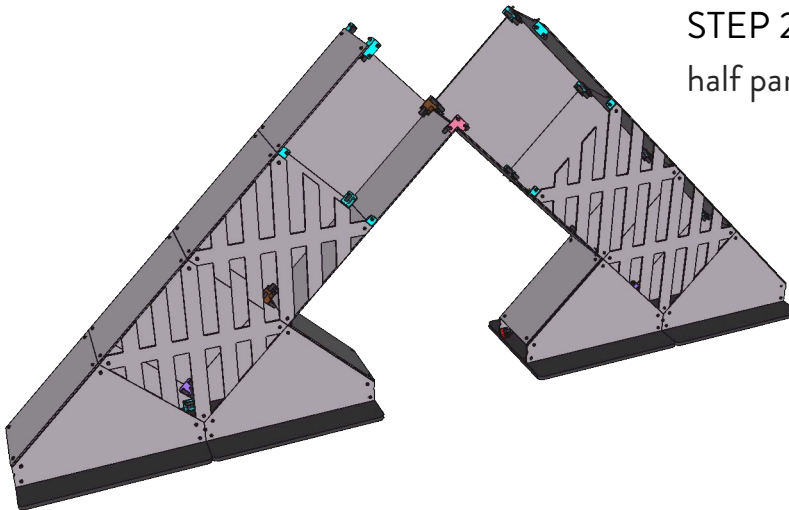
717-626-4408

<https://www.atomicdesign.tv/>

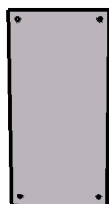
STEP 20: Attach Half Panels to Top  
of SuperLever Panel



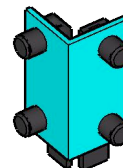
STEP 21: Attach C4 connectors to  
half panel as shown



## HARDWARE KEY



HALF PANEL



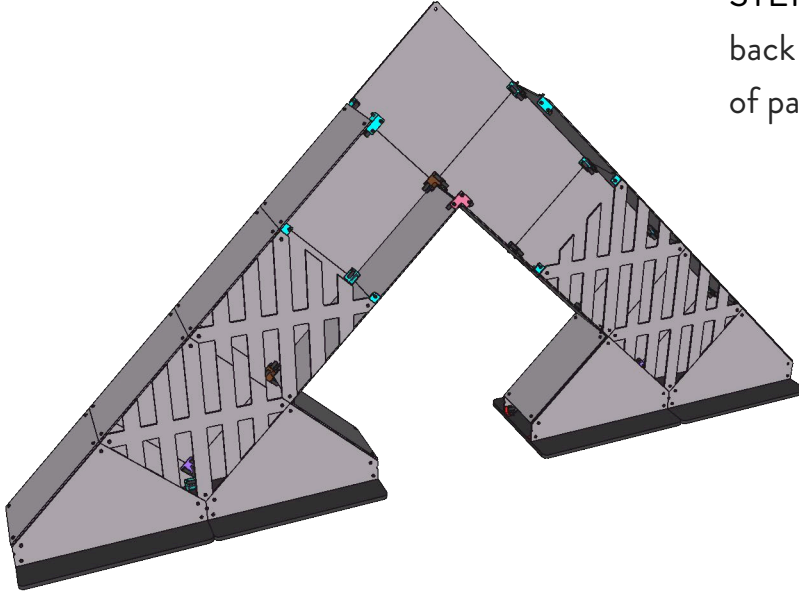
C4

QUESTIONS ABOUT ATOMIC PRODUCTS? GIVE US A RING!

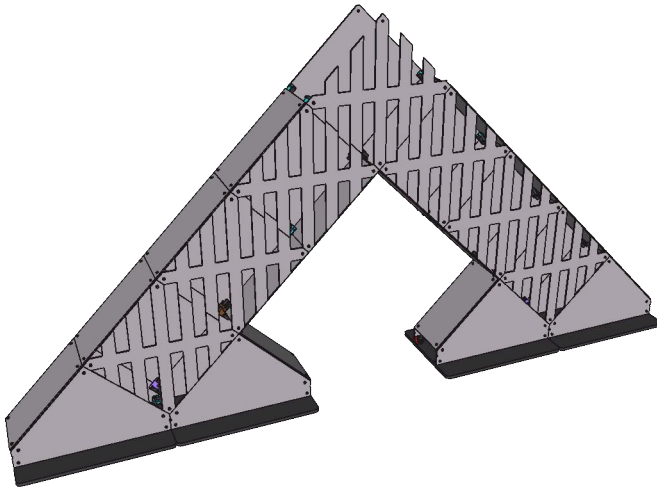
717-626-4408

<https://www.atomicdesign.tv/>

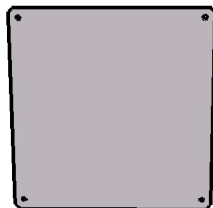
STEP 22: Attach SuperLever Panel to back of Peak (note will be final point of panel)



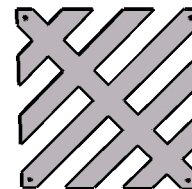
STEP 23: Attach SuperLever Panels to front of Peak



### HARDWARE KEY



SUPER LEVER PANEL



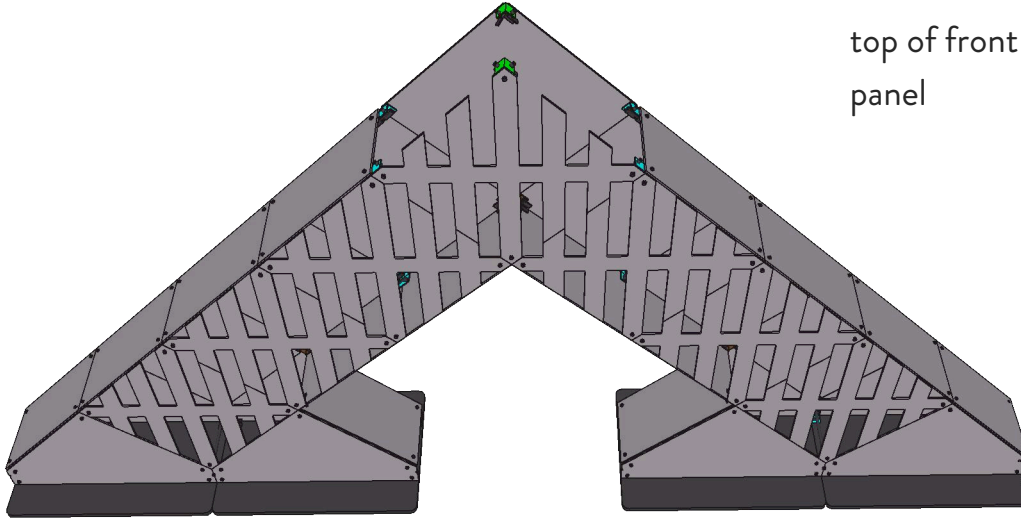
SUPER LEVER PANEL

QUESTIONS ABOUT ATOMIC PRODUCTS? GIVE US A RING!

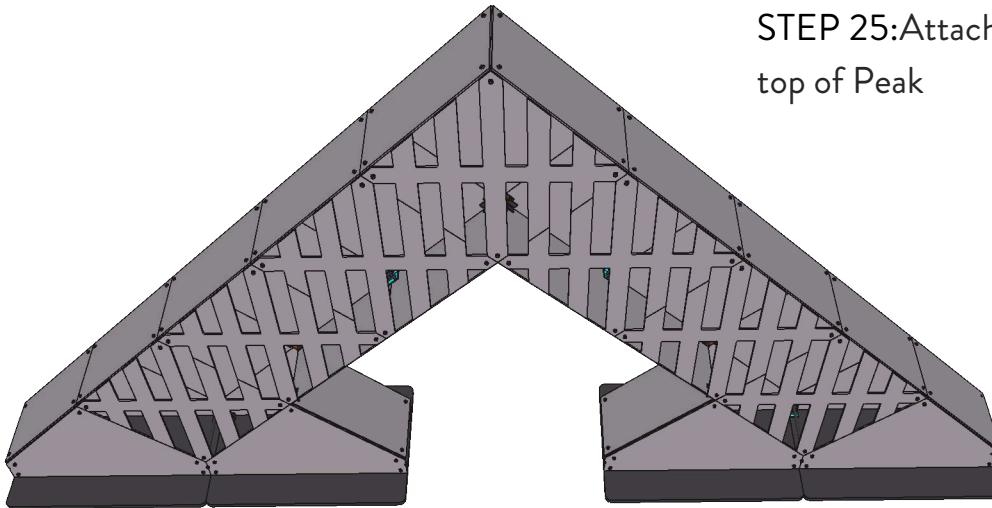
717-626-4408

<https://www.atomicdesign.tv/>

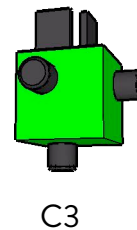
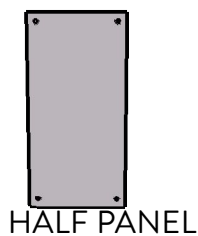
STEP 24: Attach C3 connectors to top of front and back super lever panel



STEP 25: Attach final Half panels to top of Peak



### HARDWARE KEY



QUESTIONS ABOUT ATOMIC PRODUCTS? GIVE US A RING!

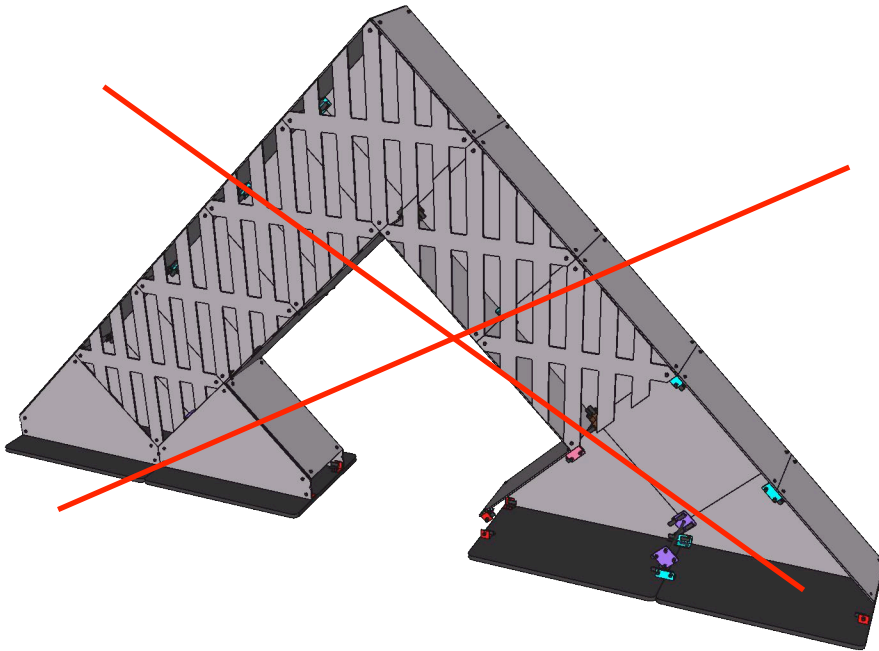
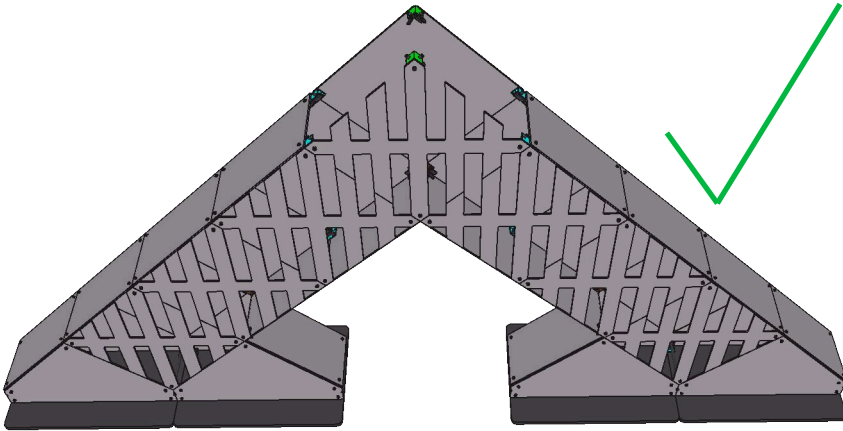
717-626-4408

<https://www.atomicdesign.tv/>



## DISASSEMBLY INSTRUCTIONS:

SuperShape MUST be disassembled from top down, in reverse order as the instructions listed. Removal of bottom panels first may result in toppling of the SuperShape



QUESTIONS ABOUT ATOMIC PRODUCTS? GIVE US A RING!

717-626-4408

<https://www.atomicdesign.tv/>