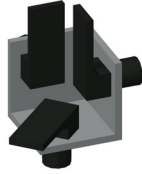


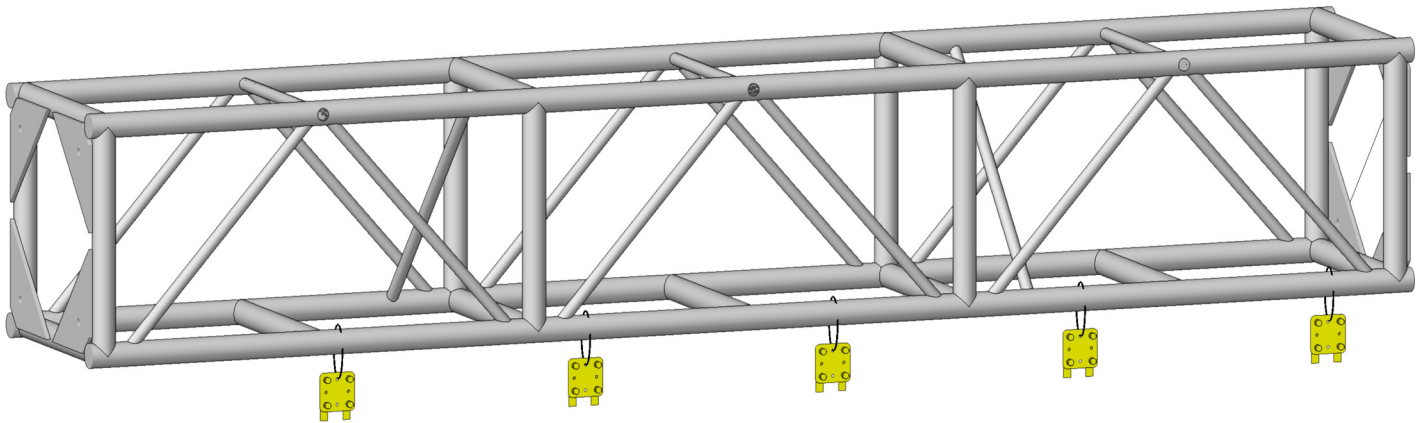
NOTE:

Actual product may vary. SuperLever No-Show panels are interchangeable and instructions show a product representation.



NOTE:

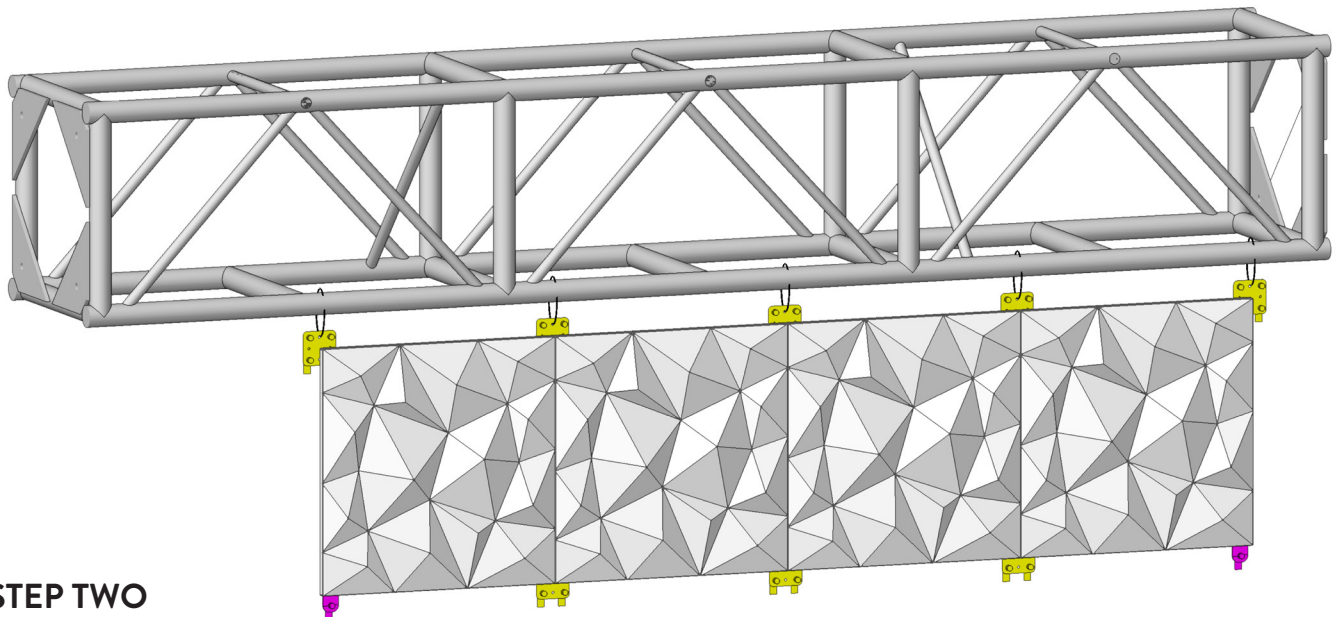
SuperLever BLK Connectors must be used with the No-Show panels.



STEP ONE

Remove top swell latches from F2 and F4 connectors.

Tie off F2 and F4 connectors to truss and ensure connectors are level with each other.



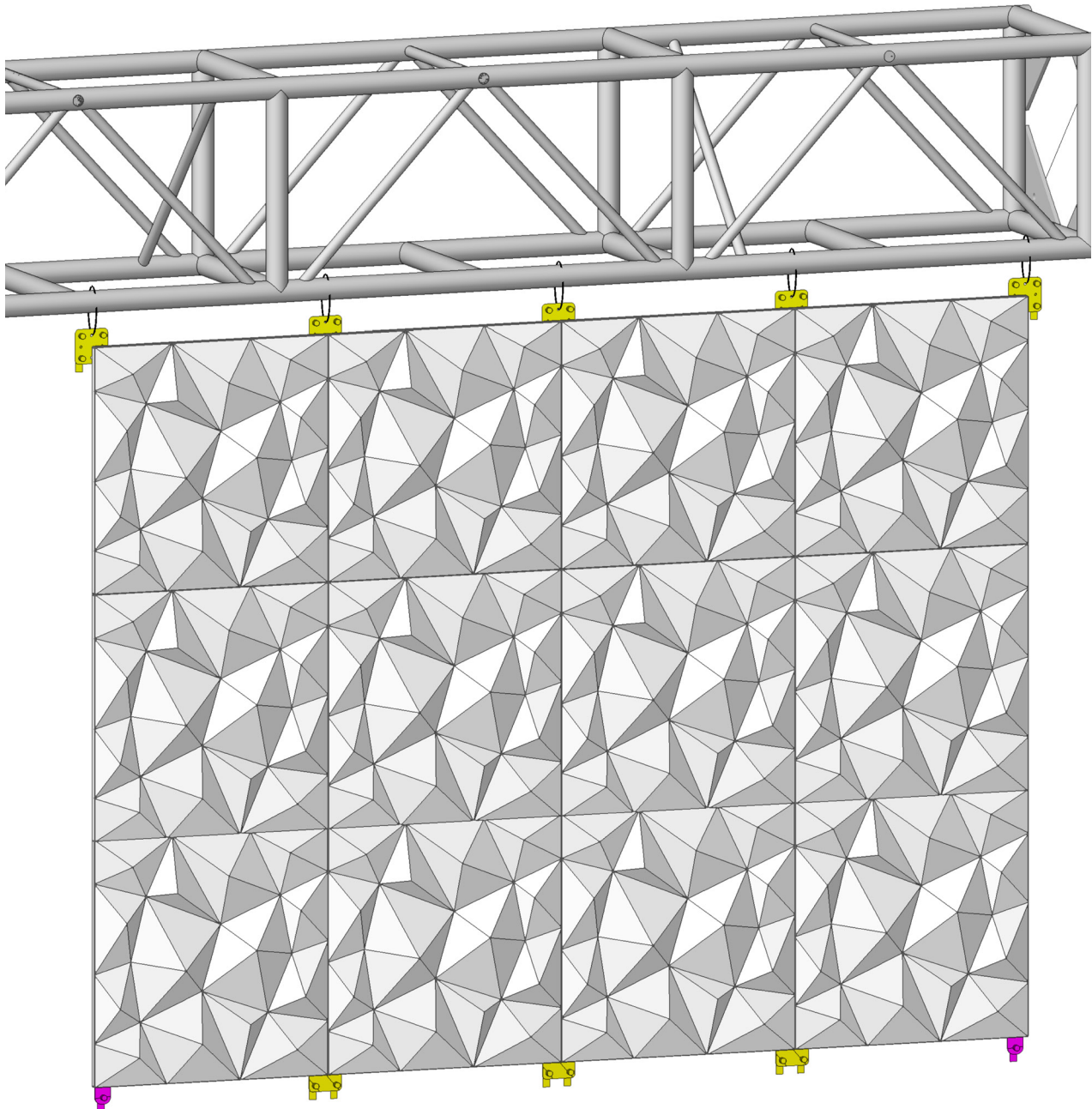
STEP TWO

Attach No-show panels to the hanging fasteners.

Attach F2 and F4 connectors as shown.

STEP THREE

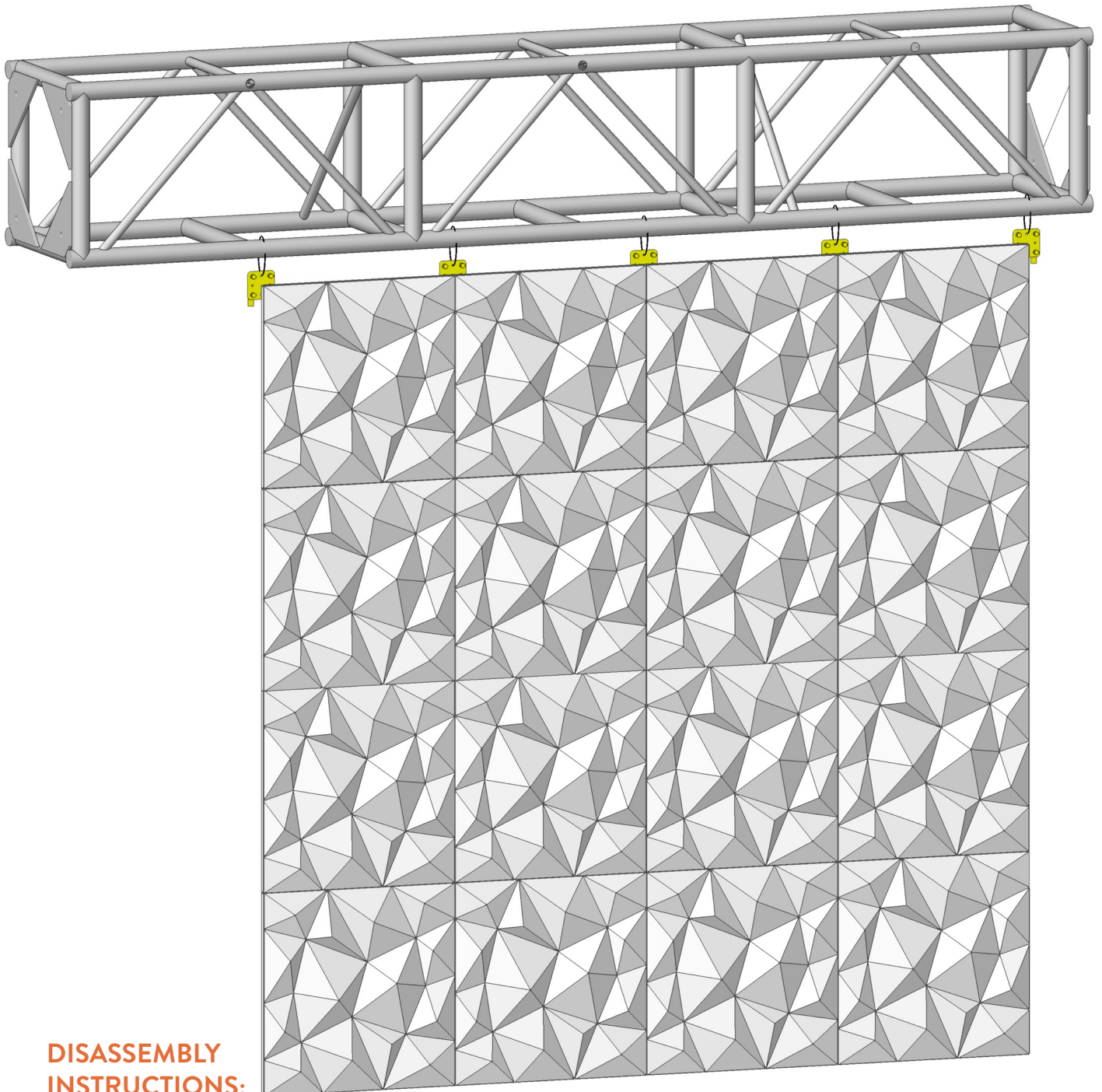
Repeat STEP TWO for the middle rows of your Hanging SuperWall.



STEP FOUR

Add the No-show panels to the bottom row.
Attach F2 connectors between the panels as shown above.

Questions about ATOMIC products?
Contact your Modular Systems Account Manager!
www.atomicdesign.tv/contact



DISASSEMBLY INSTRUCTIONS:

Hanging wall **MUST** be disassembled from bottom up, in reverse order as the assembly process. Removal of top panels first may result in a collapsing wall.

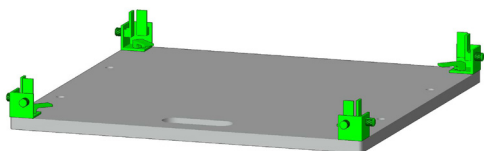
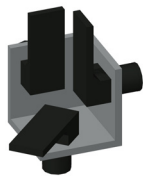
Questions about ATOMIC products?
Contact your Modular Systems Account Manager!
www.atomicdesign.tv/contact

NOTE:

Actual product may vary. SuperLever No-Show panels are interchangeable and instructions show a product representation.

NOTE:

SuperLever BLK Connectors must be used with the No-Show panels.

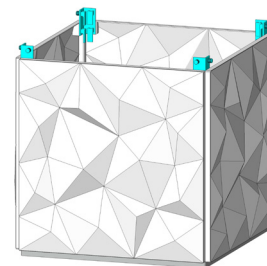
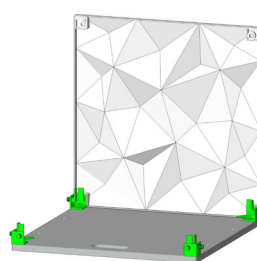


STEP ONE

Attach a C3 connector to each corner of the SuperBase.

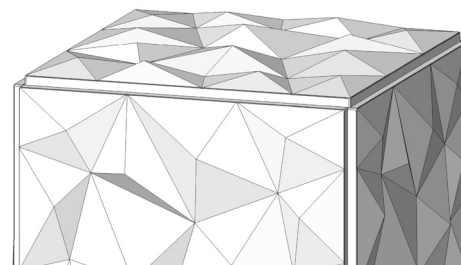
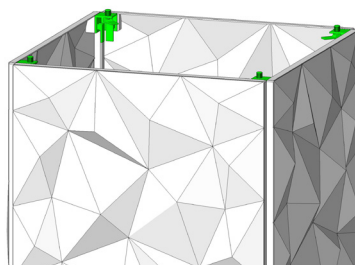
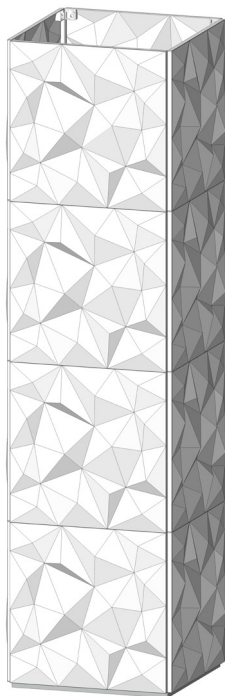
STEP TWO

Attach a panel to C3 connectors to form each face of the SuperColumn. Then attach a C4 Connector to the top corners as shown.



STEP THREE

Repeat the second part of step two until you have reached the desired height. Next, attach C3 connectors to the top corners of the column as shown. Then, place a panel on top to cap the column as shown below.



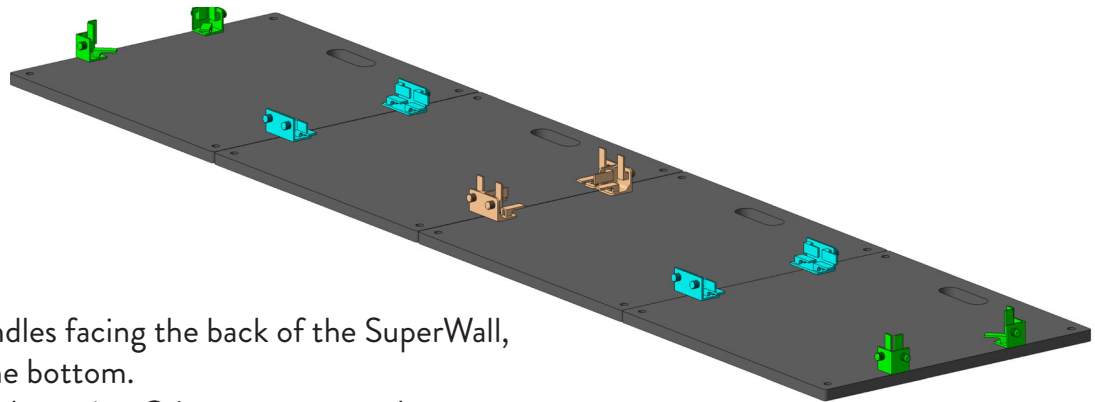
DISASSEMBLY INSTRUCTIONS:

MUST be disassembled from top down, in reverse order as the assembly process. Removal of bottom panels first may result in a collapsing column.

Questions about ATOMIC products?
Contact your Modular Systems Account Manager!
www.atomicdesign.tv/contact

NOTE:

- SuperLever No-Show panels are interchangeable, and the following instructions show a product representation. Actual panel design may vary.
- No-Show SuperWalls require internal support walls every two panels wide.
- SuperLever black connectors must be used with No-Show panels.



STEP ONE

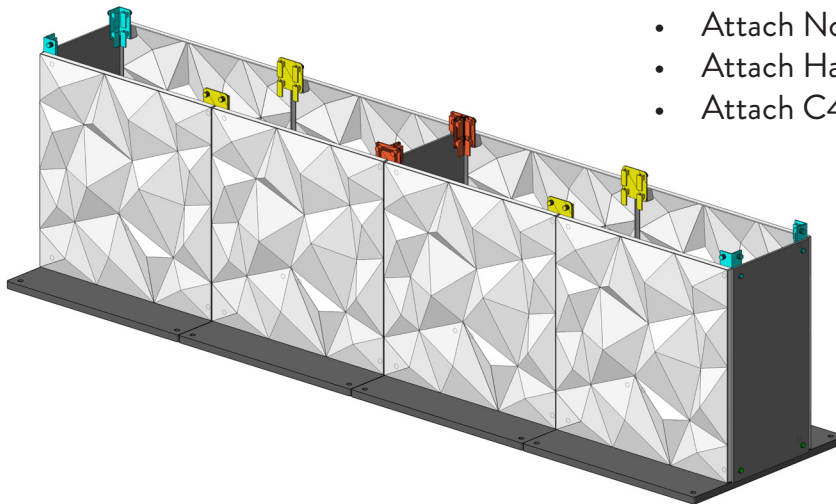
- Align bases with handles facing the back of the SuperWall, and white feet on the bottom.
- Connect bases together using C4 connectors as shown.
- Attach C3 connectors to both ends and T5 connectors in center for support panels.

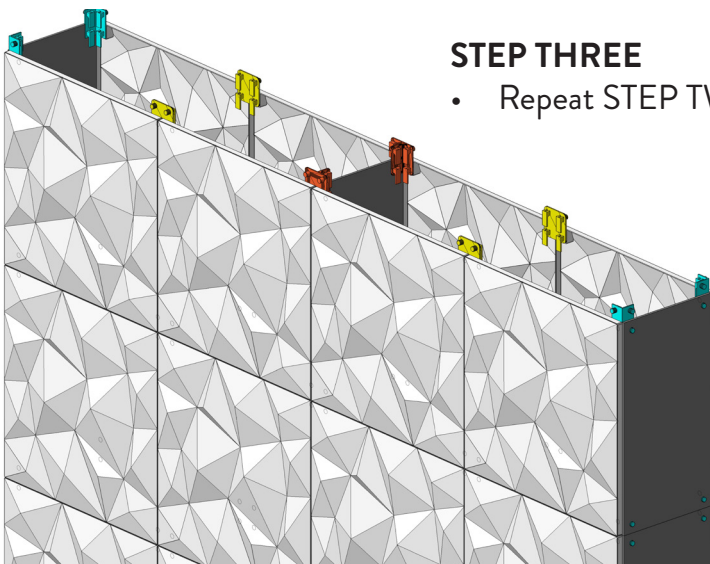
NOTE:

- T5 Connectors should be oriented with open area face down.

STEP TWO

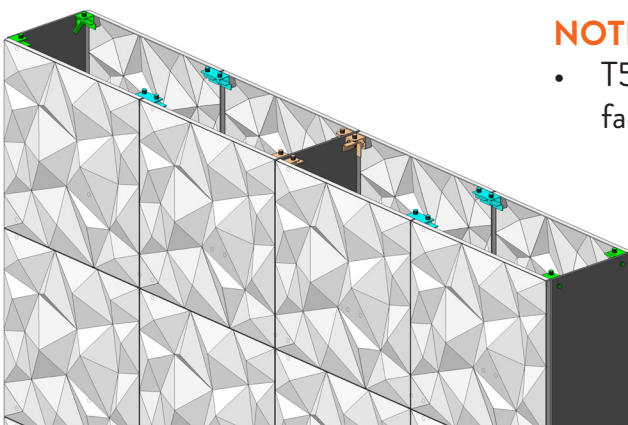
- Attach No-Show Panels on the front and back.
- Attach Half Panels to the sides and center support.
- Attach C4, F4 and T6 connectors as shown.





STEP THREE

- Repeat STEP TWO for the middle rows of your SuperWall.



STEP FOUR

- For top of SuperWall, add the top row of the No-Show panels and Half Panels.
- Attach C3, C4, and T5 connectors as shown.

NOTE:

- T5 Connectors should be oriented with open area face up.

STEP FIVE

- Complete SuperWall by attaching Half Panels to the top of the SuperWall.
- Ensure structure is stable before repositioning.

DISASSEMBLY INSTRUCTIONS:

SuperWall **MUST** be disassembled from top down, in reverse order as the assembly process. Removal of bottom panels first may result in a collapsing wall.

