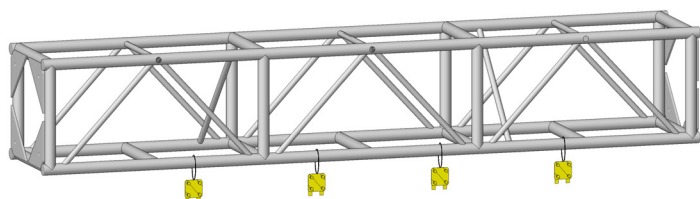


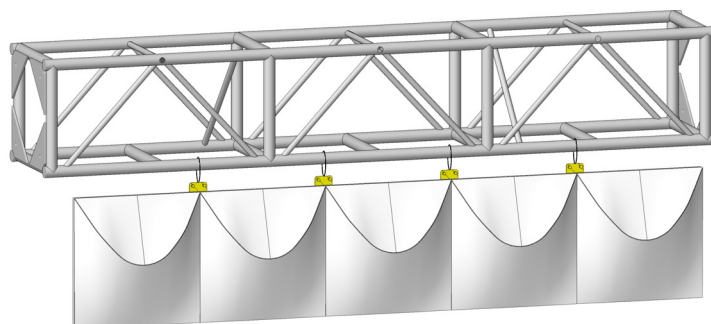
### NOTE:

- “S-hooks” are not included; SuperLever panels and connectors are designed to work with tieline. Hanging SuperLever panels from covered truss or pipe (i.e., with drape or truss sock) requires “S-hooks” or similar hardware not provided by ATOMIC.



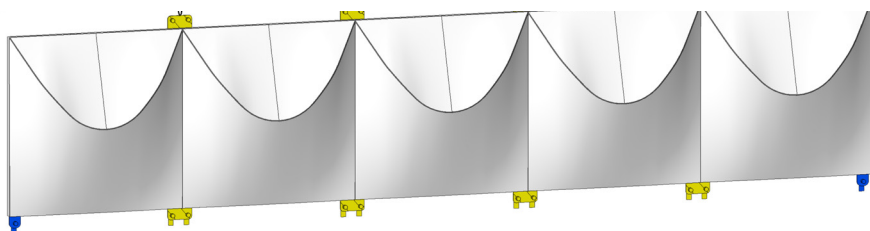
### STEP ONE

Using tieline attach F4 and F2 connectors to truss.



### STEP TWO

Attach panels to F4 and F2 connectors tied to truss.

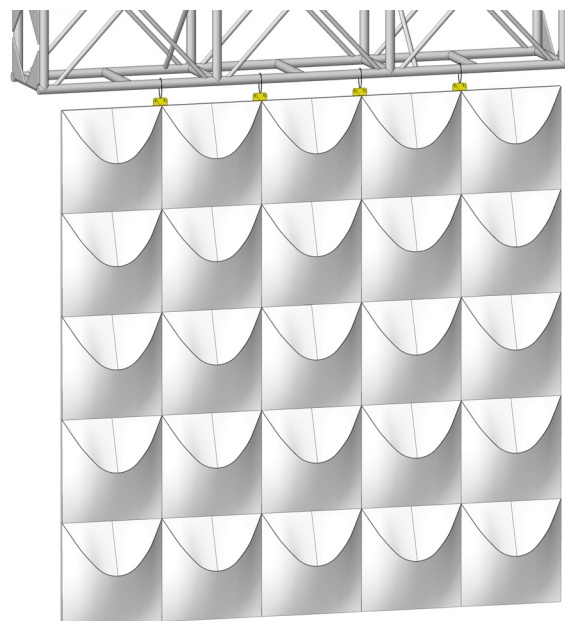


### STEP THREE

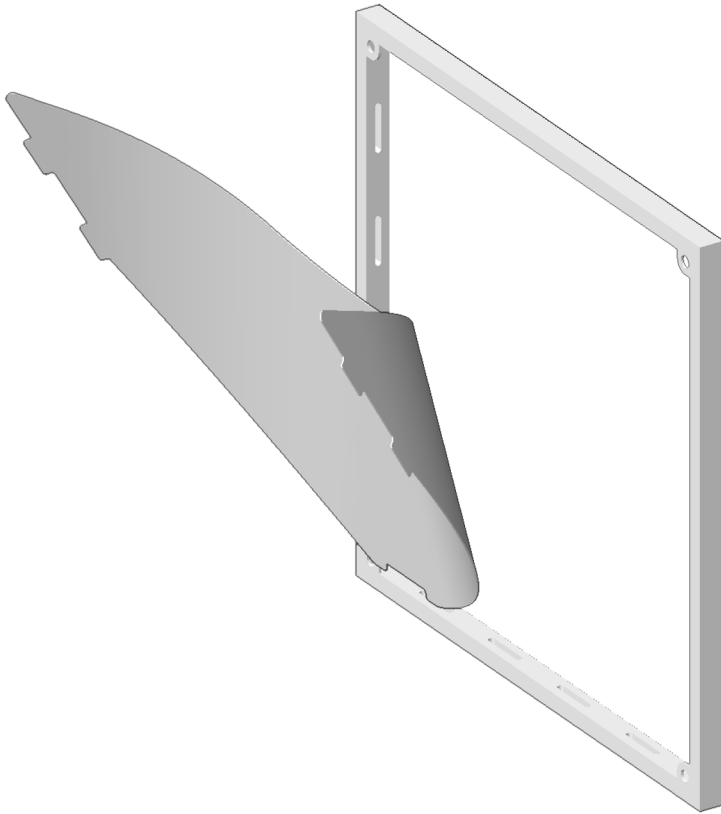
Continue attaching panels and F4 and F2 connectors until desired height is reached. Finish with F2 connectors.

### DISASSEMBLY INSTRUCTIONS:

Hanging wall **MUST** be disassembled from bottom up, in reverse order as the assembly process. Removal of top panels first may result in a collapsing wall.



Questions about ATOMIC products?  
Contact your Modular Systems Account Manager!  
[www.atomicdesign.tv/contact](http://www.atomicdesign.tv/contact)

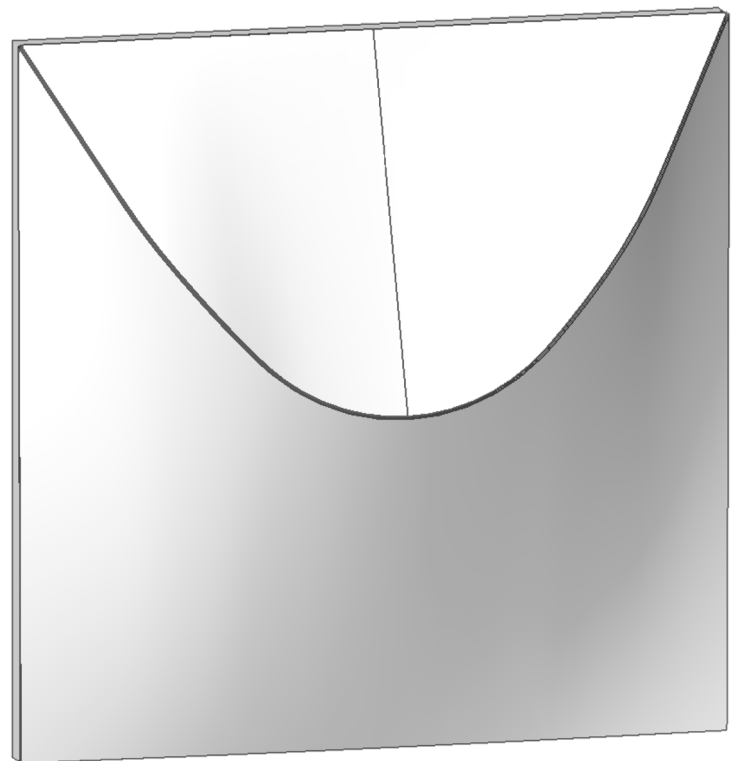


## STEP ONE

Place tabs into channel or slots in frame as illustrated.

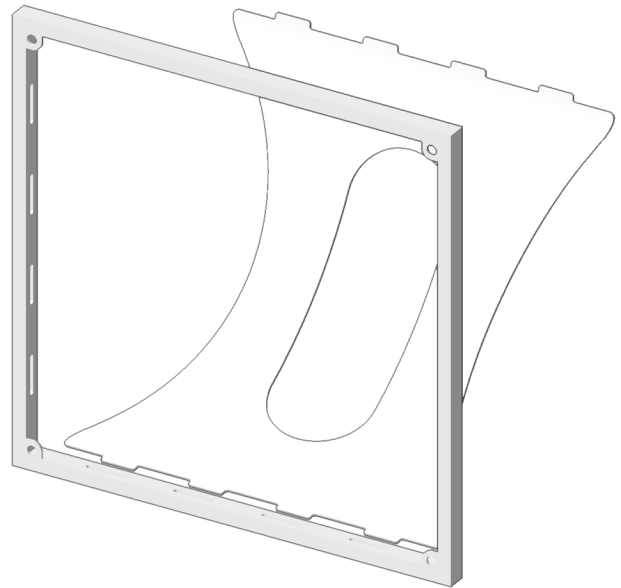
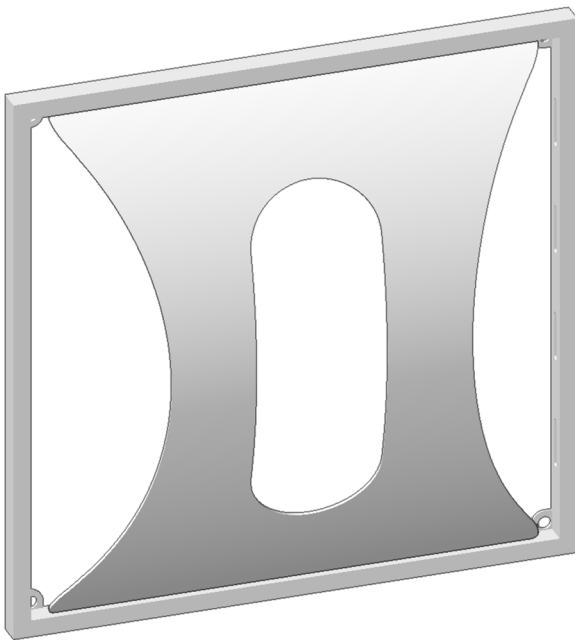
## STEP TWO

Bend Dune insert into fabric, lifting the frame to allow the insert to bend into the fabric. Place Dune insert edge into frame channel or slots.



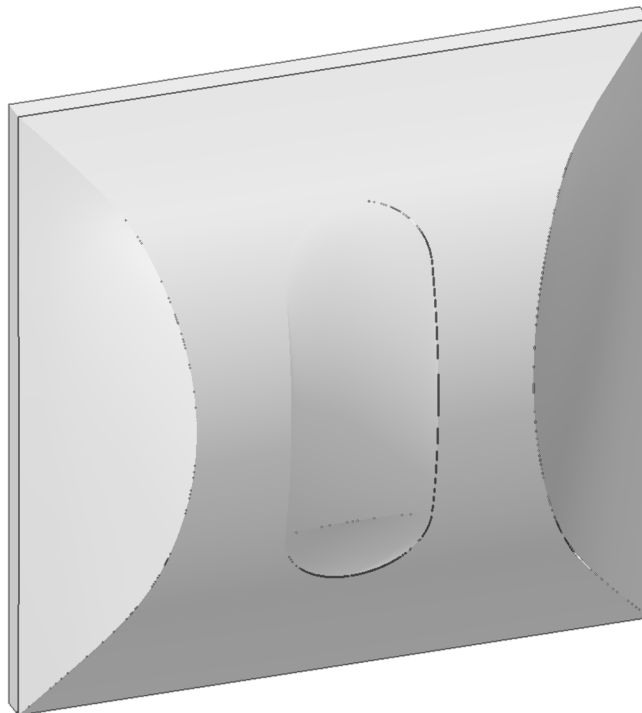
## STEP ONE

Place tabs into channel or frame slots as illustrated.



## STEP TWO

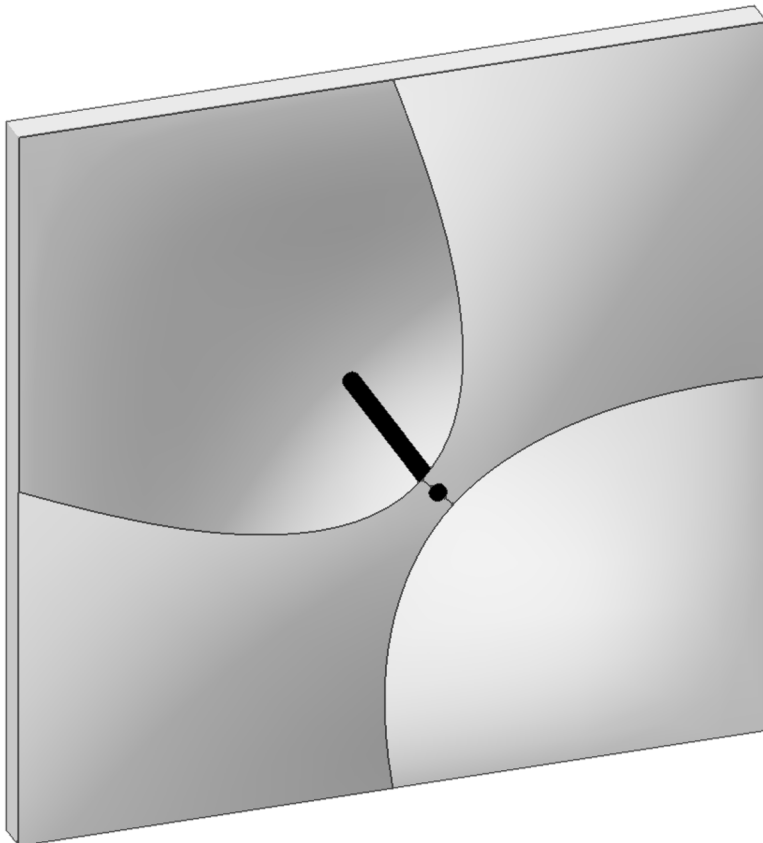
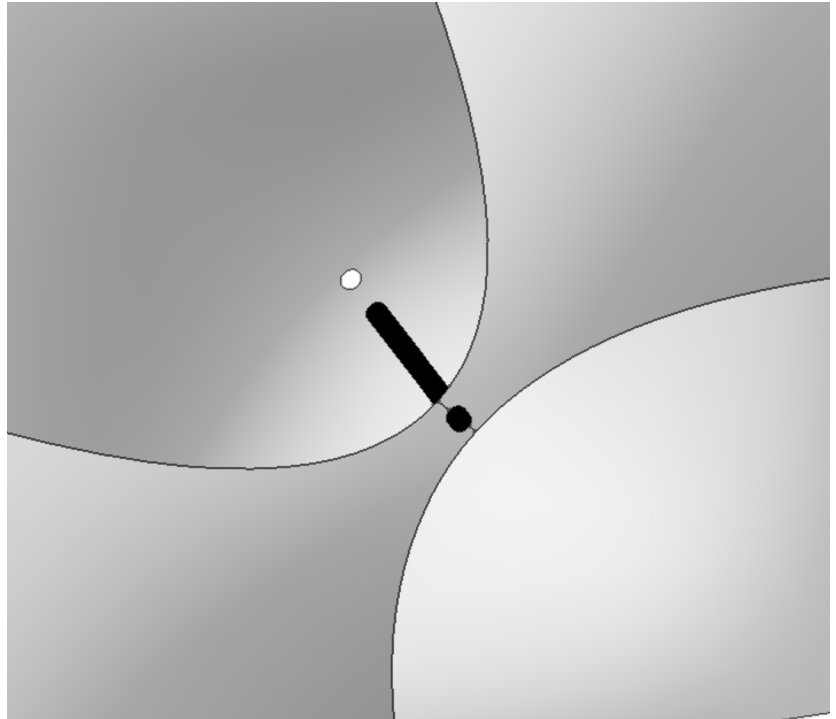
Bend Notch insert into fabric, lifting the frame to allow the insert to bend into the fabric. Place Notch insert edge into frame channel or slots.



Questions about ATOMIC products?  
Contact your Modular Systems Account Manager!  
[www.atomicdesign.tv/contact](http://www.atomicdesign.tv/contact)

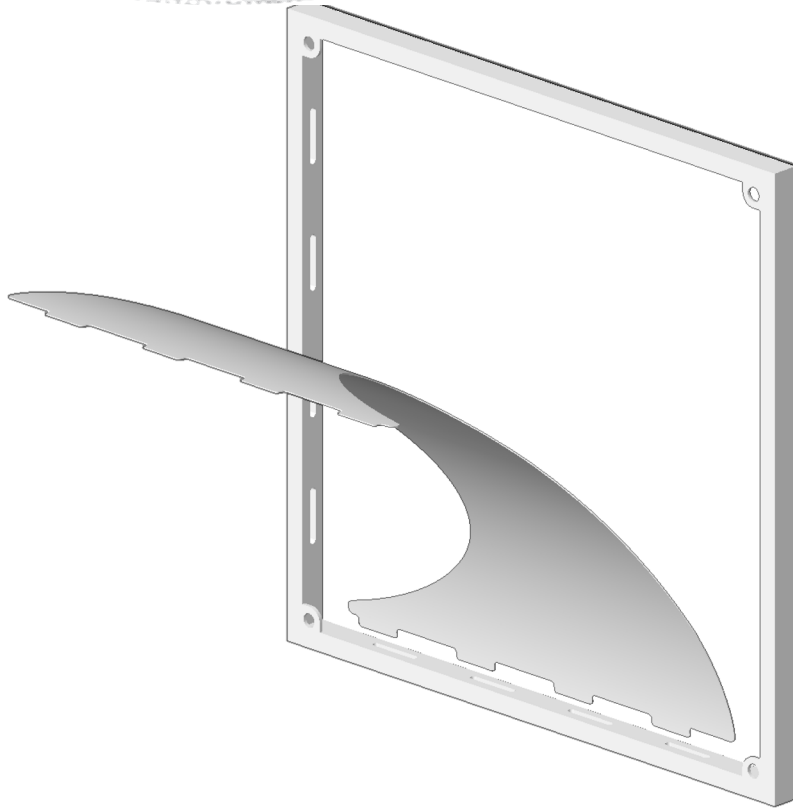
### STEP ONE

Hold Turbine panel vertically.  
A metal rod is attached to the  
front fabric, hanging freely.



### STEP TWO

Hold metal tube. Stretch fabric  
outward until the bottom of the  
metal rod fits into the metal pin  
attached to the back fabric.



## STEP ONE

Place tabs into channel or slots in frame as illustrated.

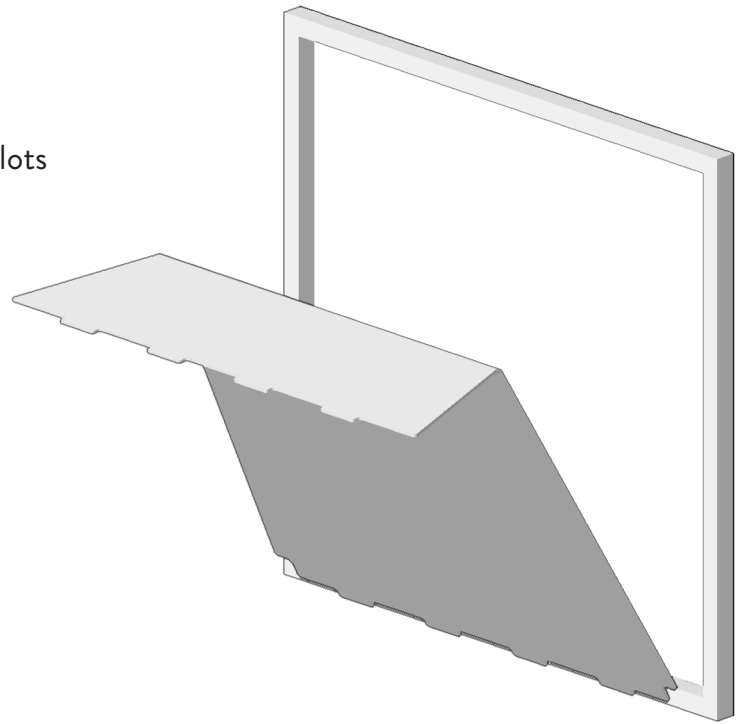
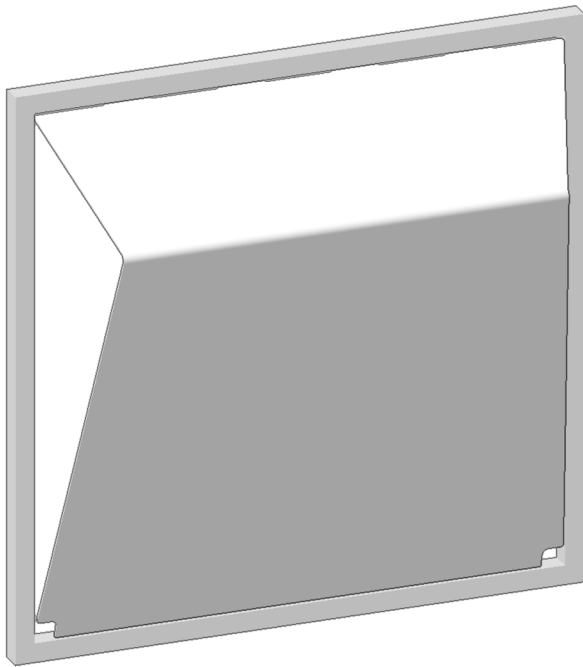
## STEP TWO

Bend Wave insert into fabric, lifting the frame to allow the insert to bend into the fabric. Place Wave insert edge into frame channel or slots.



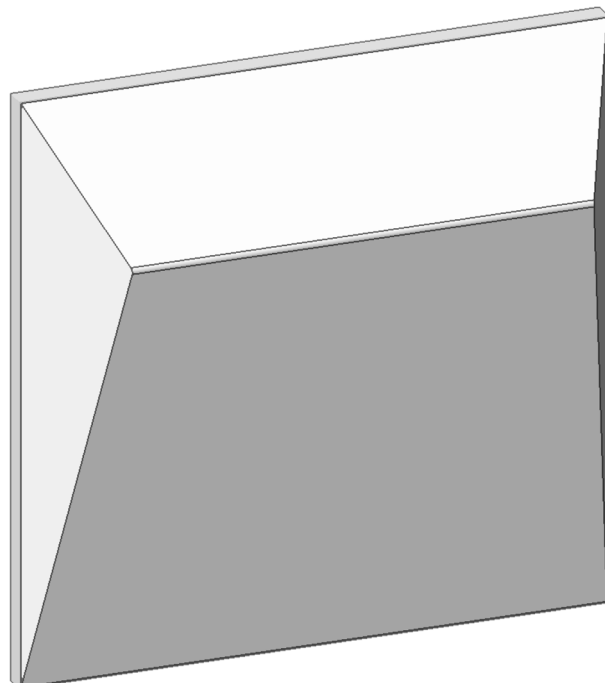
## STEP ONE

Place tabs into channel or frame slots as illustrated.



## STEP TWO

Bend Wedge insert into fabric, lifting the frame to allow the insert to bend into the fabric. Place Wedge insert edge into frame channels or slots.



Questions about ATOMIC products?  
Contact your Modular Systems Account Manager!  
[www.atomicdesign.tv/contact](http://www.atomicdesign.tv/contact)