

NOTE:

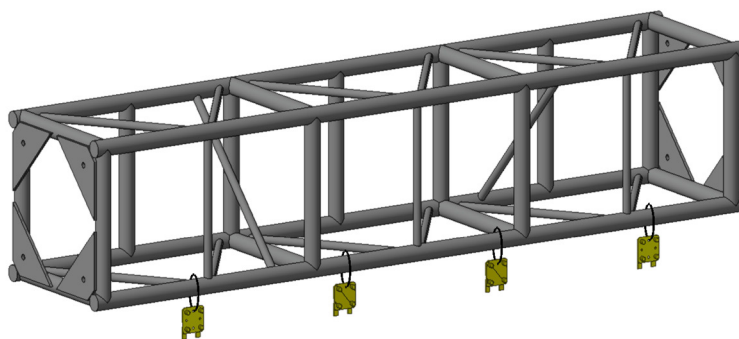
For safety and greatest efficiency while building the Un-Wall, begin with the truss at working height. Gradually raise the truss as you continue to build the hanging wall.

NOTE:

Actual product may vary. Un-panels are interchangeable and instructions show a product representation.

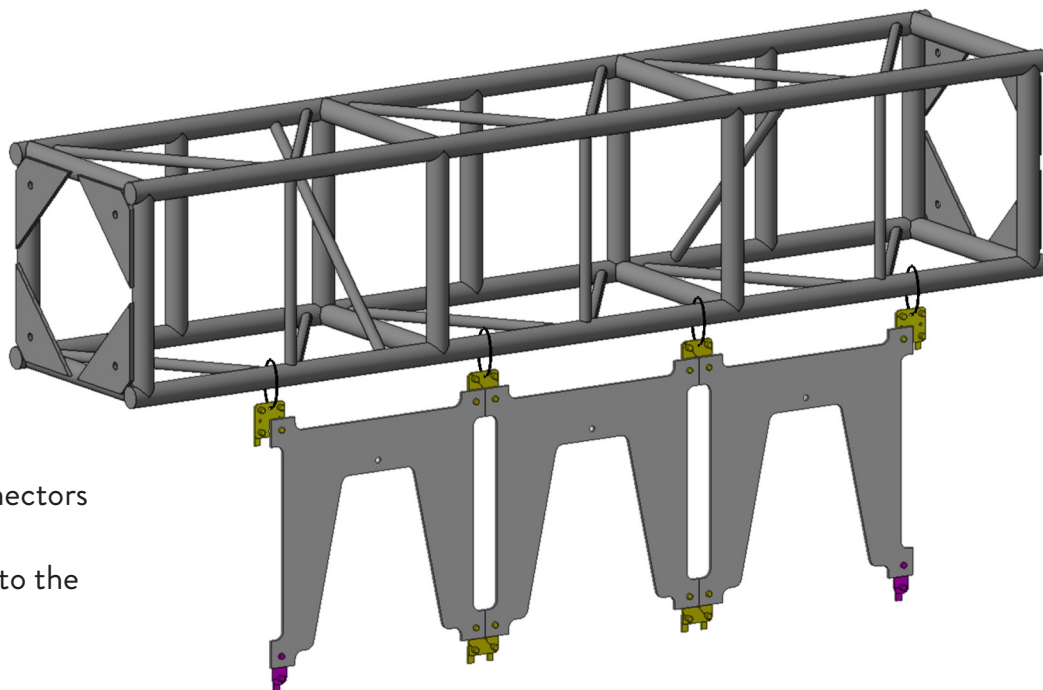
STEP ONE

- Remove top swell latches from F2 and F4 connectors.
- Tie off F2 and F4 connectors to truss and ensure connectors are level with each other.



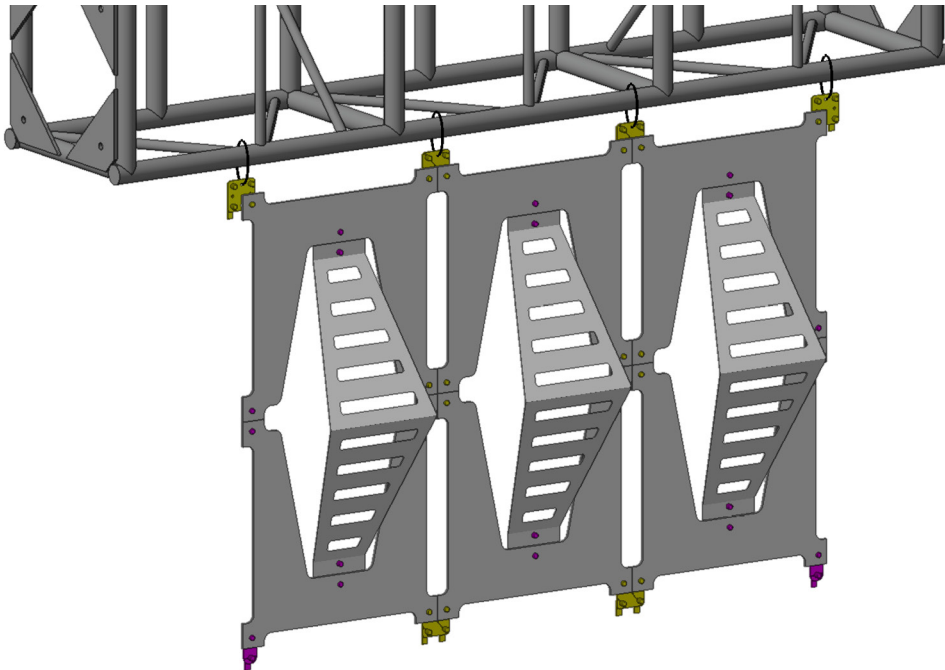
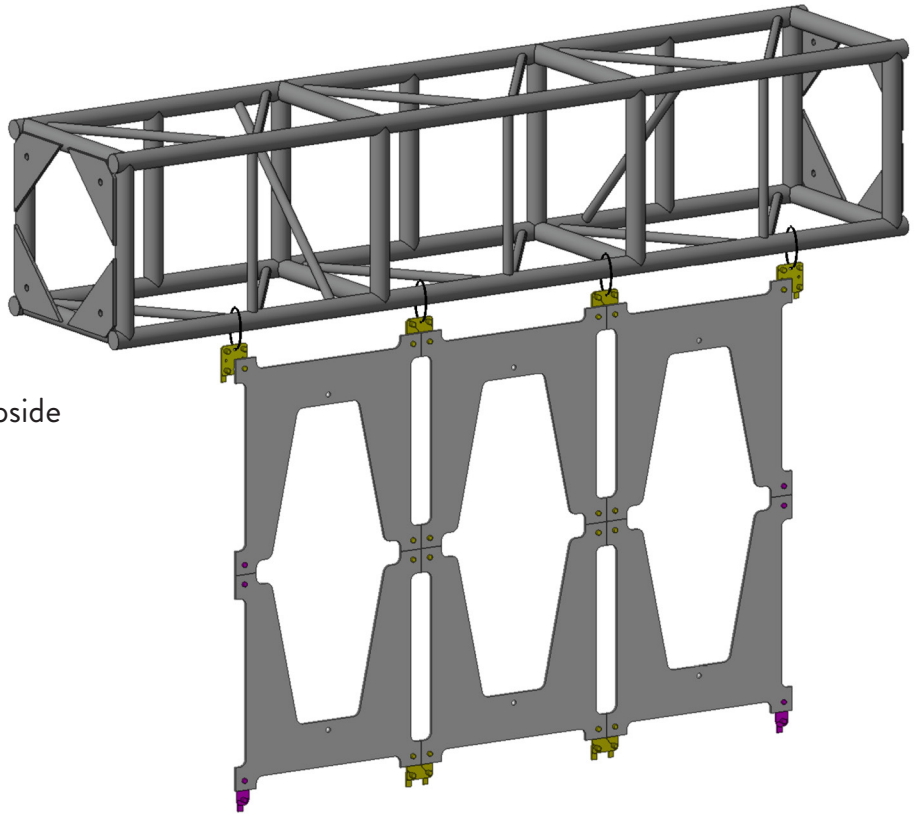
STEP TWO

- Attach Un-Panels to the Connectors placed in STEP ONE.
- Attach F2 and F4 connectors to the bottom.



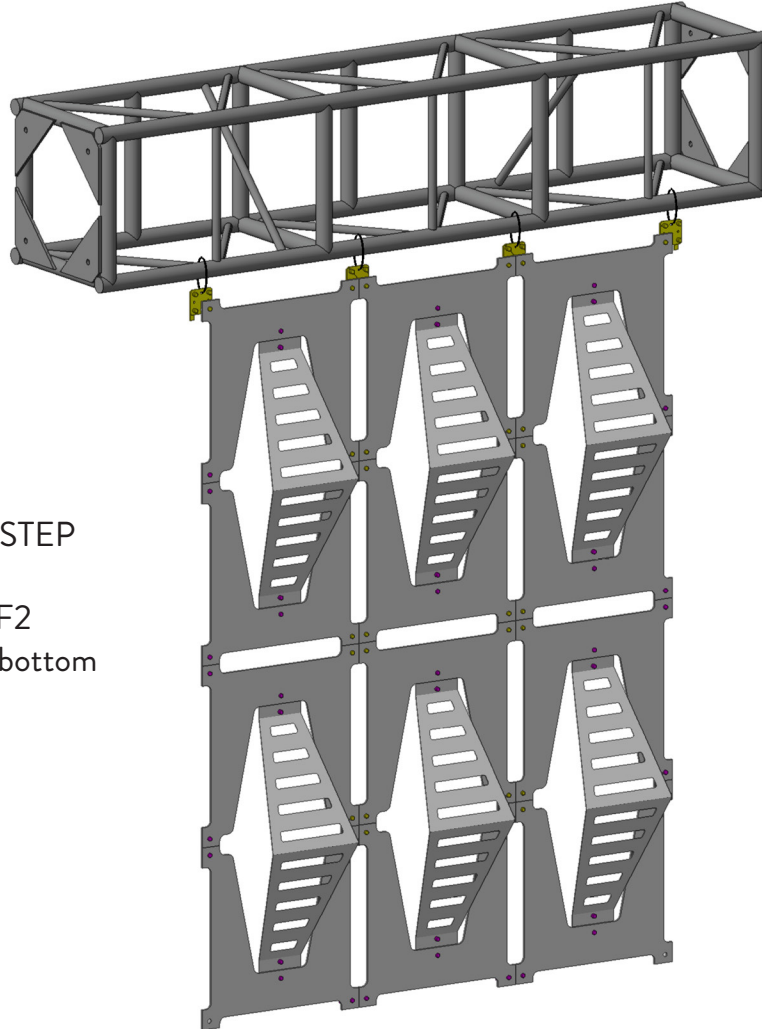
STEP THREE

- Attach a second row of Un-Panels upside down with F2 and F4 Connectors.
- Attach F2 and F4 connectors to the bottom.



STEP FOUR

- Attach Un-Panel Insert into opening and connect with F2 fasteners.



STEP FIVE

- Repeat STEP TWO and STEP THREE.
- At the bottom row, add F2 connectors to finish the bottom row.

DISASSEMBLY INSTRUCTIONS:

Un-Panel Wall **MUST** be disassembled from bottom up, in reverse order as the assembly process. Removal of top panels first may result in a collapsing wall.

Questions about ATOMIC products?
Contact your Modular Systems Account Manager!
www.atomicdesign.tv/contact