

INSTRUCTION SETS:

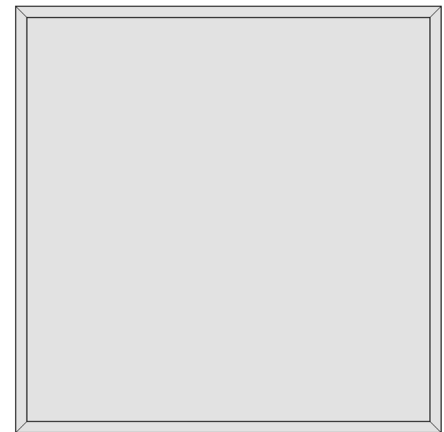
SUPERWALL
Pages 2-6

SUPERCOLUMN
Pages 7-11

BACKDROP
Pages 12-15

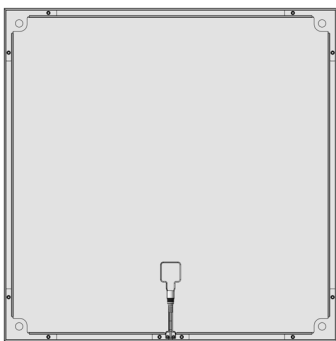
POWER INFO:

- Up to (4) Switch Panels can be connected to a single power source.
- 24V DC power supply with each panel.
- Power Supply
 - Input: AC 100-240V, 50-60 HZ
 - Output: DC 24V, 4.16A MAX/circuits
- Grounded plug head
- For use in dry locations only.
- Must be connected to a non-dimmable, constant power.

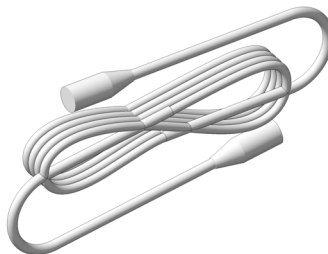


Switch (Front)

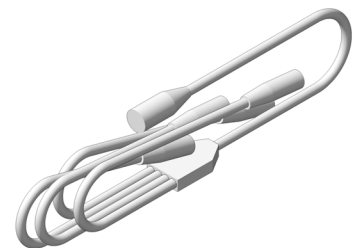
ORDER OF HOOK-UP



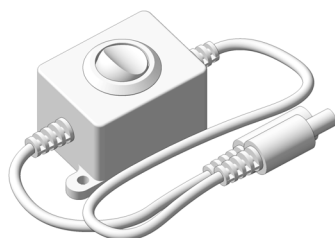
Switch (Back)



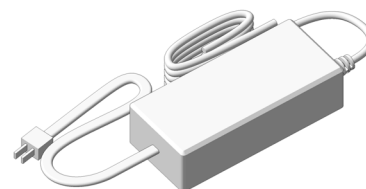
**Extension Cable
(Optional)**



**4-way splitter
(Optional)**



Power Switch

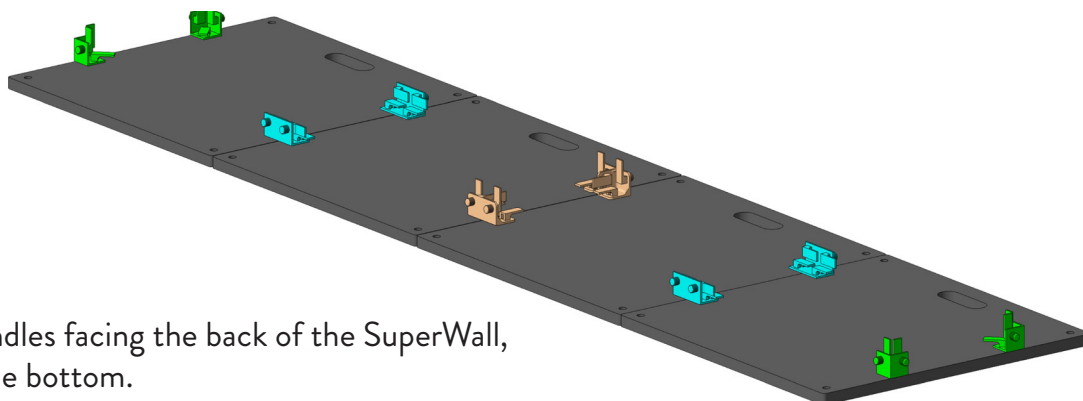


Power Supply

Questions about ATOMIC products?
Contact your Modular Systems Account Manager!
www.atomicdesign.tv/contact

NOTE:

- Switch panel SuperWalls require internal support walls every two panels wide.
- SuperLever black connectors must be used with Switch panels.

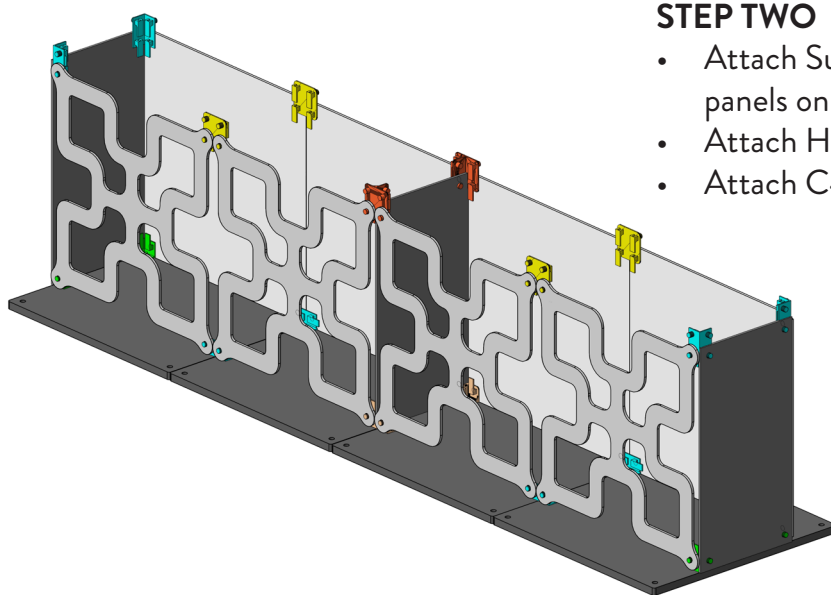


STEP ONE

- Align bases with handles facing the back of the SuperWall, and white feet on the bottom.
- Connect bases together using C4 connectors as shown.
- Attach C3 connectors to both ends and T5 connectors in center for support panels.

NOTE:

- T5 Connectors should be oriented with open area face down.

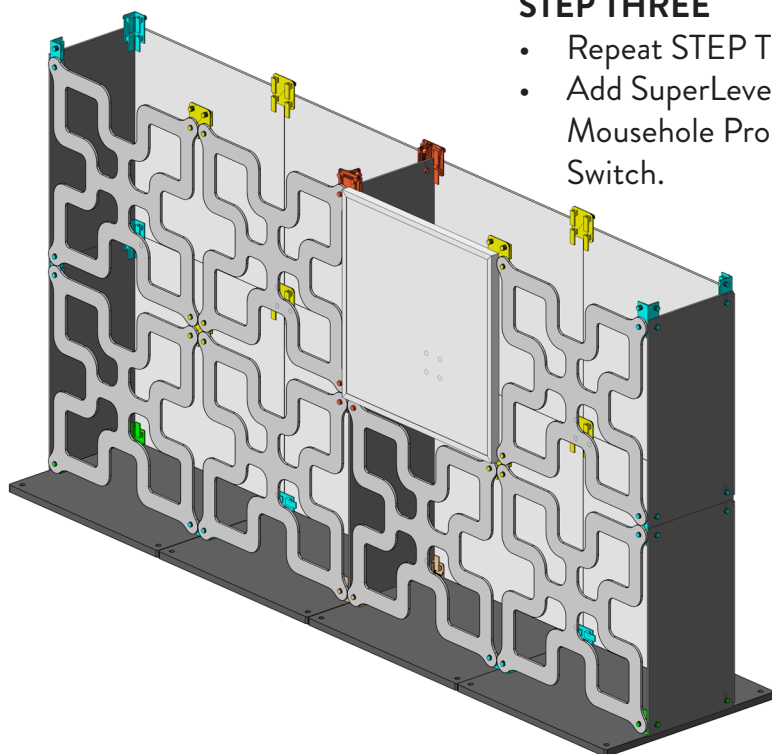


STEP TWO

- Attach SuperLever panels on the front and Propane panels on the back.
- Attach Half panels to the sides and center support.
- Attach C4, F4 and T6 connectors as shown.

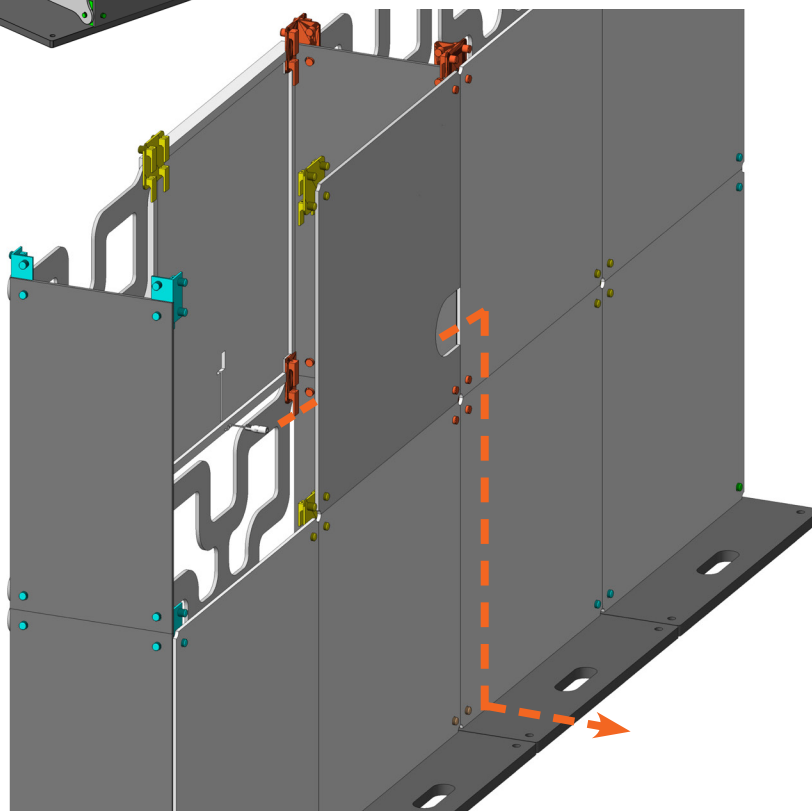
STEP THREE

- Repeat STEP TWO for the middle rows of your SuperWall.
- Add SuperLever Switch panel on front of wall and Mousehole Propane panel on back of wall directly behind Switch.



NOTE:

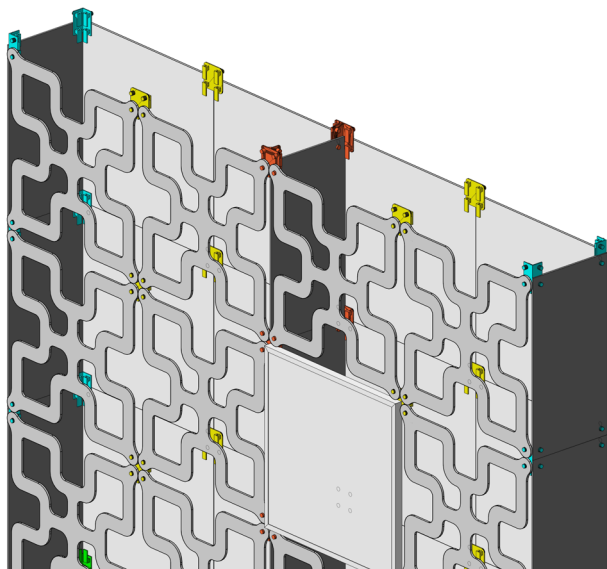
- Guide extension cable out of the back of the wall through the Mousehole propane as shown to the right.



Questions about ATOMIC products?
Contact your Modular Systems Account Manager!
www.atomicdesign.tv/contact

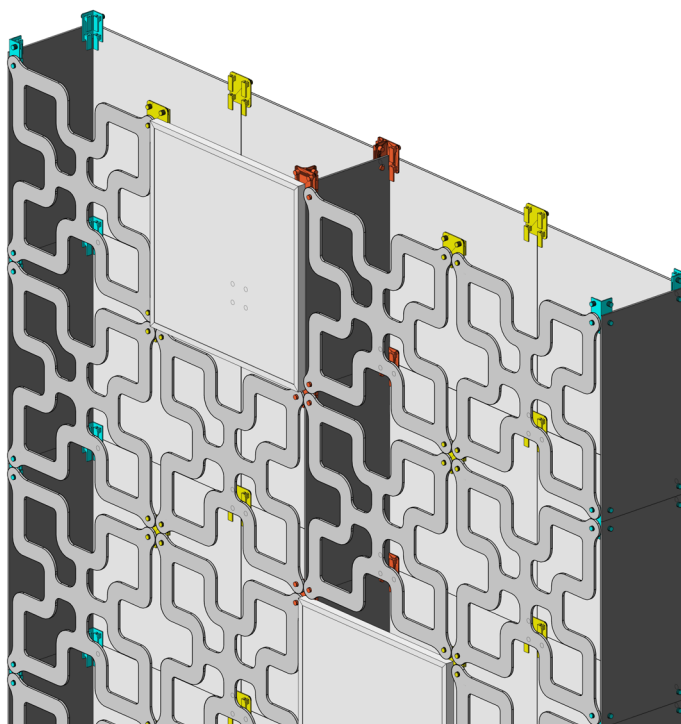
STEP FOUR

- Attach SuperLever panels on the front and Propane panels on the back.
- Attach Half panels to the sides and center support.
- Attach C4, F4 and T6 connectors as shown.



STEP FIVE

- Repeat STEP THREE including cord management.

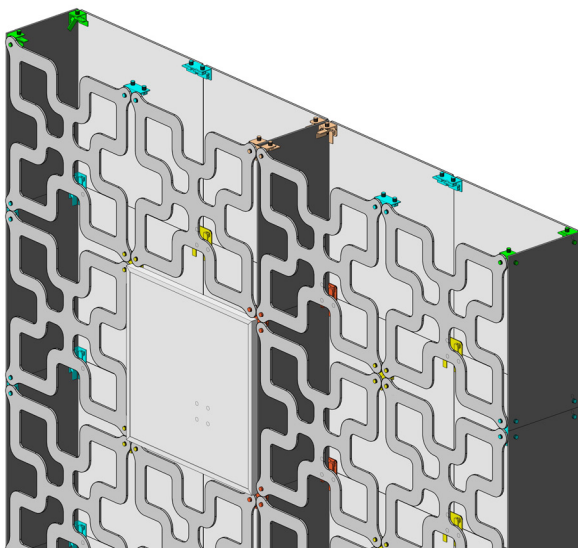


STEP SIX

- For top of SuperWall, add the top row of the No-Show panels and Half panels.
- Attach C3, C4, and T5 connectors as shown.

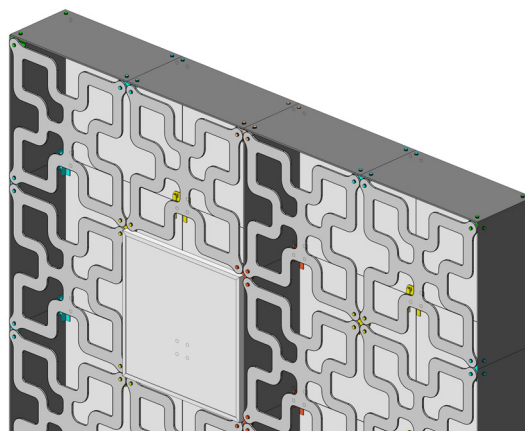
NOTE:

- T5 Connectors should be oriented with open area face up.



STEP SEVEN

- Complete SuperWall by attaching Half panels to the top of the SuperWall.
- Ensure structure is stable before repositioning.

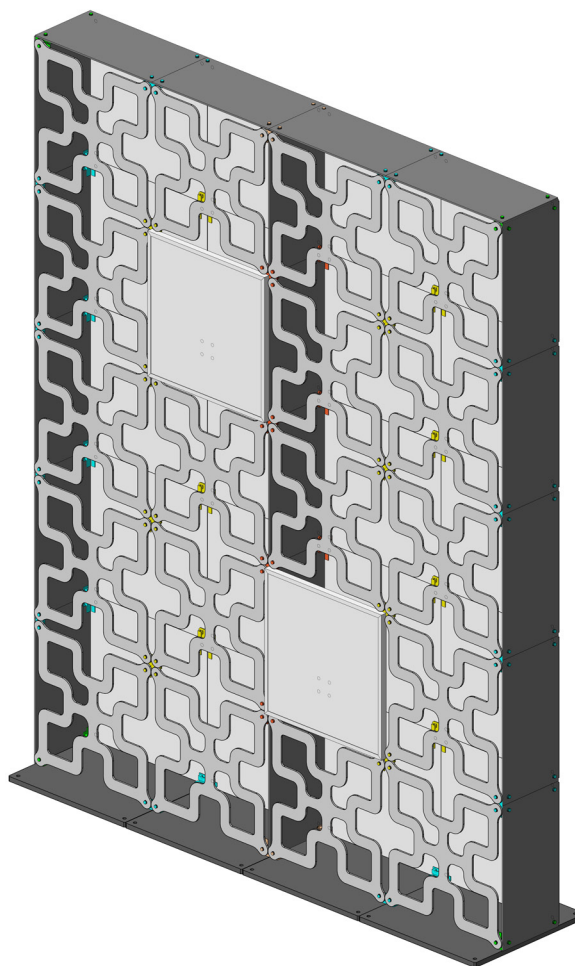


DISASSEMBLY INSTRUCTIONS:

SuperWall MUST be disassembled from top down, in reverse order as the assembly process. Removal of bottom panels first may result in a collapsing wall.

PACKAGING NOTE:

Each Switch panel and its cords need to be repacked in its own box. Following repackaging sheet included in each box.

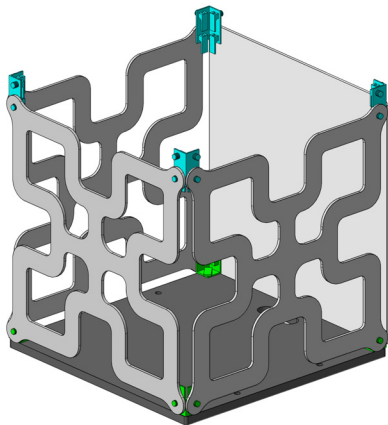
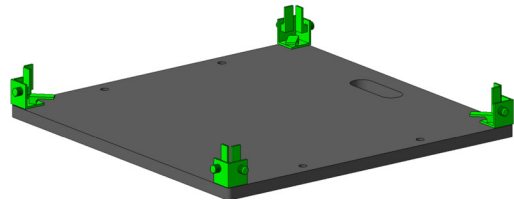


NOTE:

- SuperLever black connectors must be used with Switch panels.

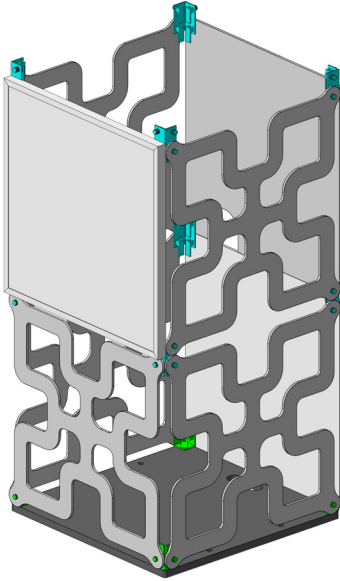
STEP ONE

- Align base with handle facing the back of the SuperColumn, and white feet on the bottom.
- Attach C3 connectors to corners.



STEP TWO

- Attach SuperLever panels on the front and sides.
- Attach a Propane panel on the back.
- Attach C4 connectors to the corners.

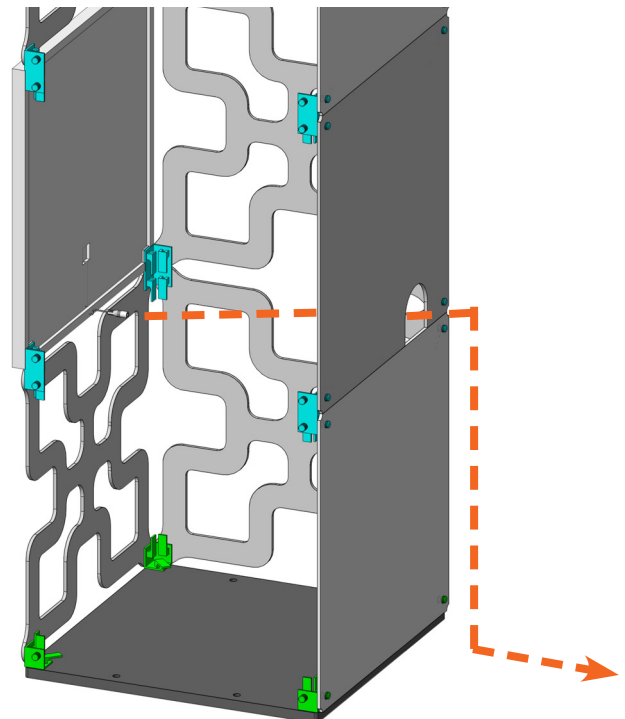


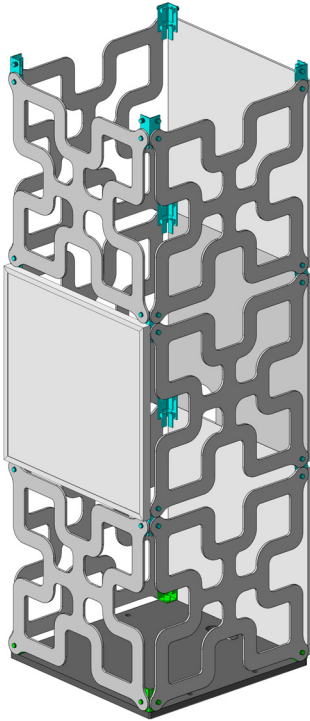
STEP THREE

- Repeat STEP TWO for the middle rows of your SuperColumn.
- Add SuperLever Switch panel on front of Column and Mousehole Propane panel on back of SuperColumn directly behind Switch.

NOTE:

- Guide Extension cable out of the back of the SuperColumn through the Mousehole propane as shown to the Right.
- Connect to 4-way splitter if connecting 1 to 4 panels.



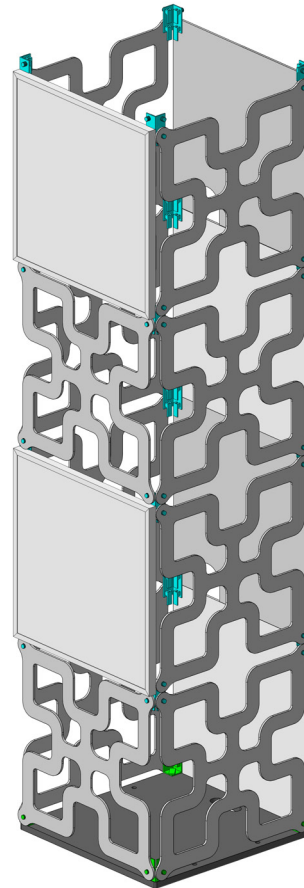


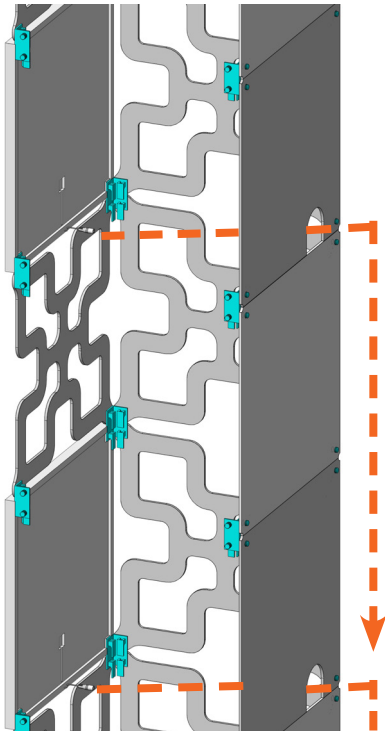
STEP FOUR

- Repeat STEP TWO.

STEP FIVE

- Repeat STEP THREE including cord management.



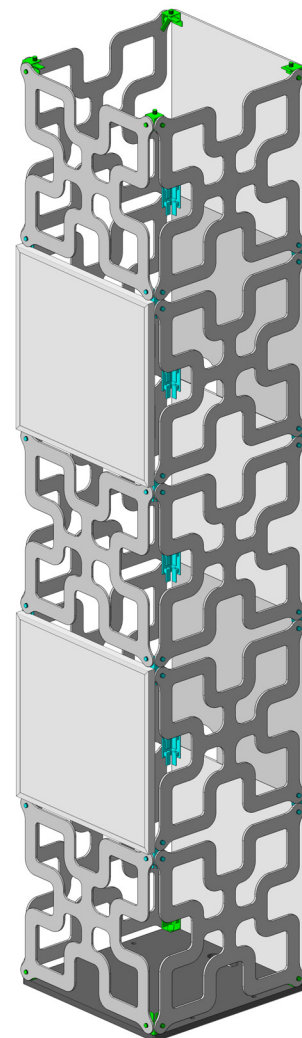


NOTE:

- Guide Extension cable out of the back of the SuperColumn through the Mousehole propane as shown to the Right.
- Connect to 4-way splitter if connecting 1 to 4 panels.

STEP SIX

- Repeat STEP TWO.



Questions about ATOMIC products?
Contact your Modular Systems Account Manager!
www.atomicdesign.tv/contact

STEP SEVEN

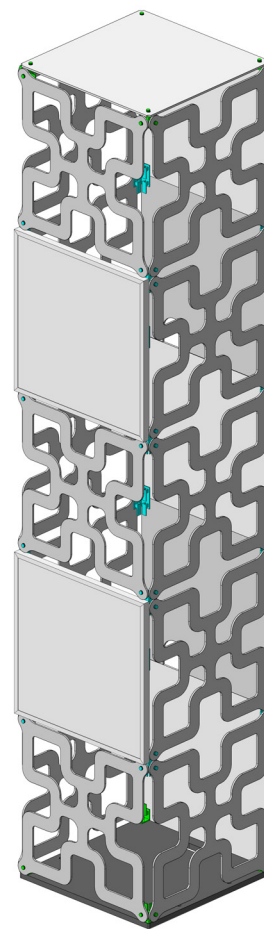
- Complete SuperColumn by attaching Propane panel to the top of the SuperColumn.
- Ensure structure is stable before repositioning.

DISASSEMBLY INSTRUCTIONS:

SuperColumn **MUST** be disassembled from top down, in reverse order as the assembly process. Removal of bottom panels first may result in a collapsing column.

PACKAGING NOTE:

Each Switch panel and its cords need to be repacked in its own box. Following repackaging sheet included in each box.

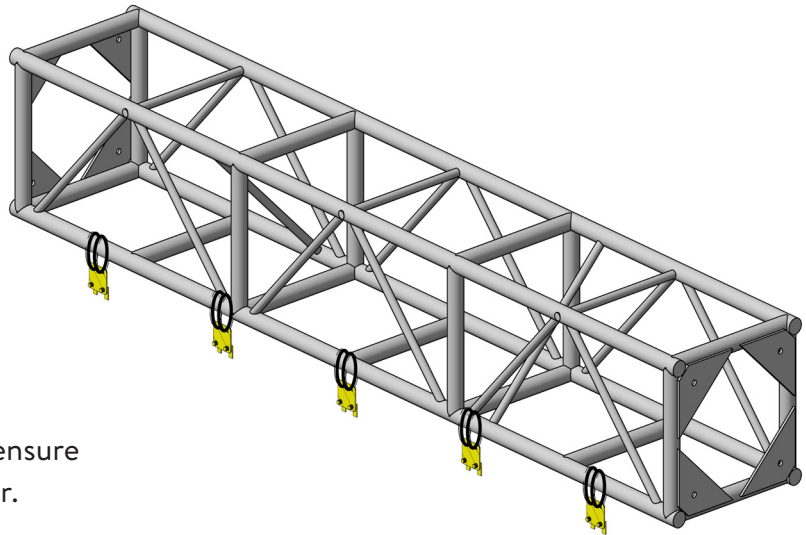


NOTE:

- SuperLever black connectors must be used with Switch panels.

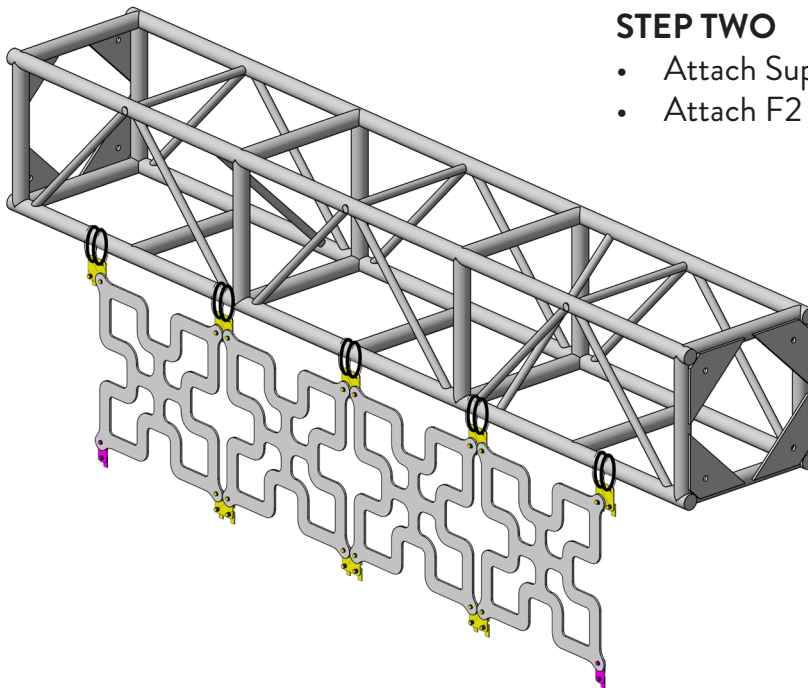
STEP ONE

- Tie off F4 connectors to truss and ensure connectors are level with each other.



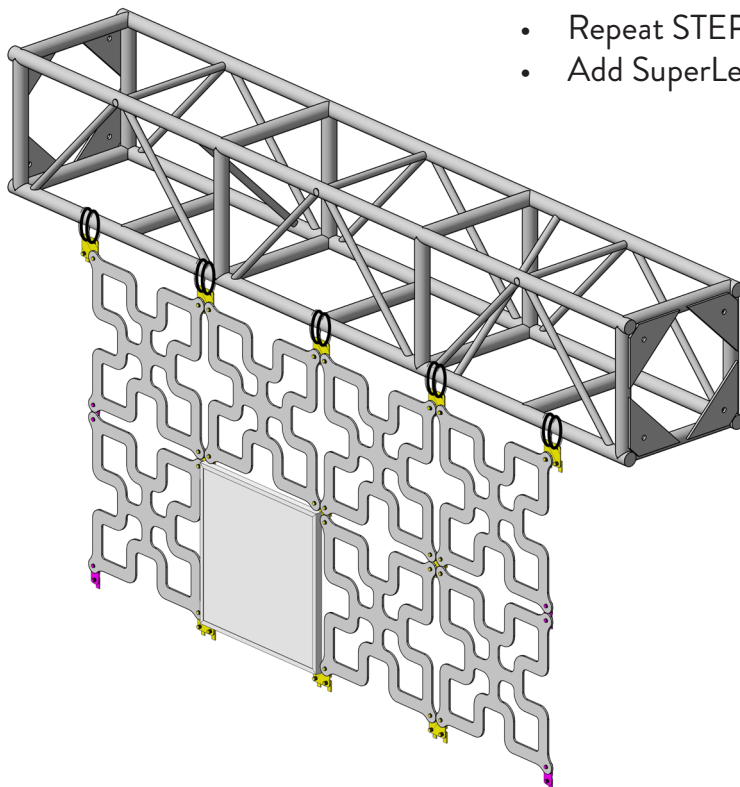
STEP TWO

- Attach SuperLever panels to the hanging fasteners
- Attach F2 and F4 connectors as shown.



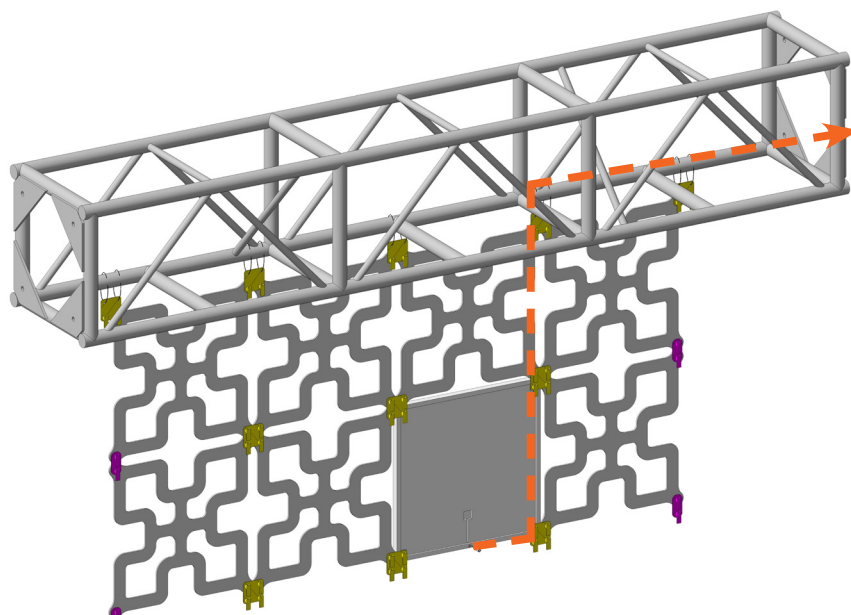
STEP THREE

- Repeat STEP TWO for the middle rows of your Backdrop.
- Add SuperLever Switch Panel where desired.



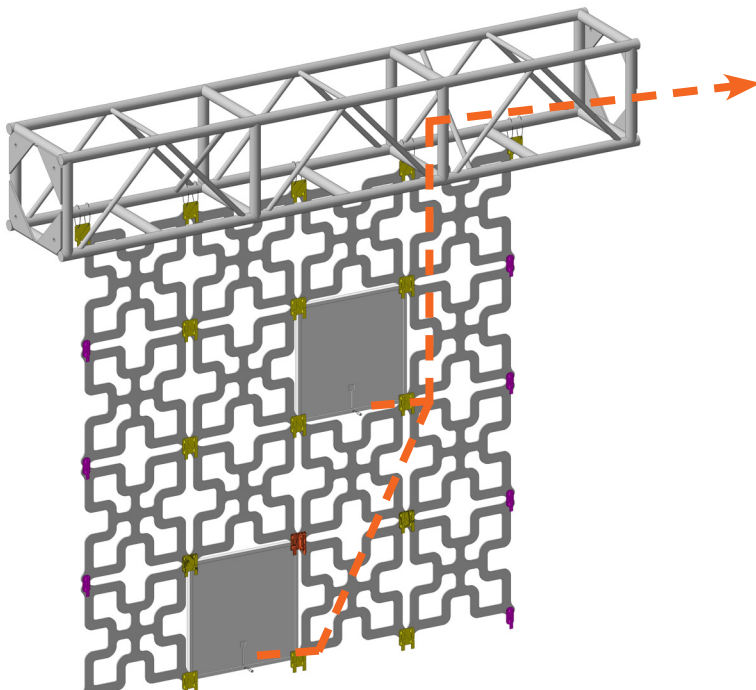
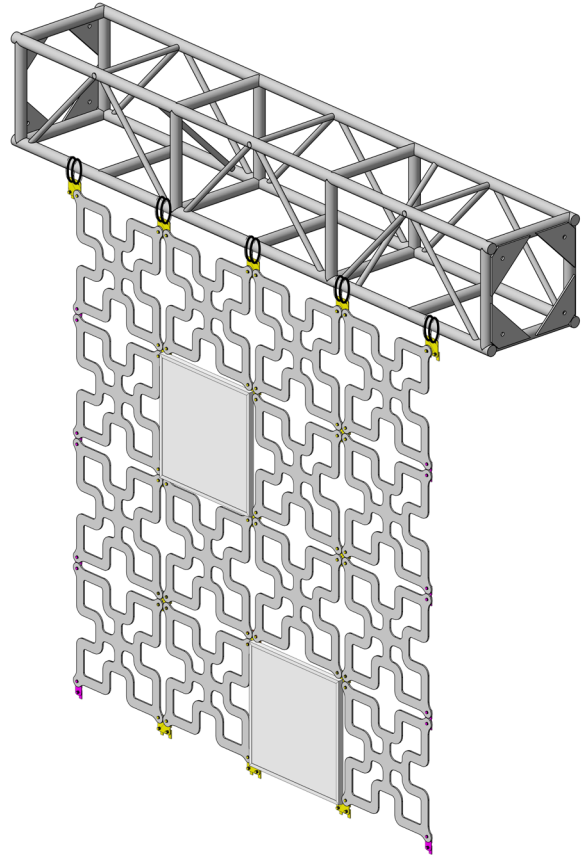
NOTE:

- Guide Extension cable up to truss and along to one side.
- Connect into 4-way splitter if connecting between 1 and 4 panels.



STEP FOUR

- Continue adding SuperLever panels, F2 and F4 connectors for each row.
- Where a Switch panel is used, follow the cord management notes below.



NOTE:

- Guide Extension cable up to truss and along to one side.
- Connect into 4-way splitter if connecting between 1 and 4 panels.

STEP FIVE

- Complete Backdrop by attaching panels to the bottom row.
- Add F2 connectors to bottom.

DISASSEMBLY INSTRUCTIONS:

Backdrop **MUST** be disassembled from bottom up, in reverse order as the assembly process. Removal of top panels first may result in a collapsing wall.

PACKAGING NOTE:

Each Switch panel and its cords need to be repacked in its own box.
Following repackaging sheet included in each box.

