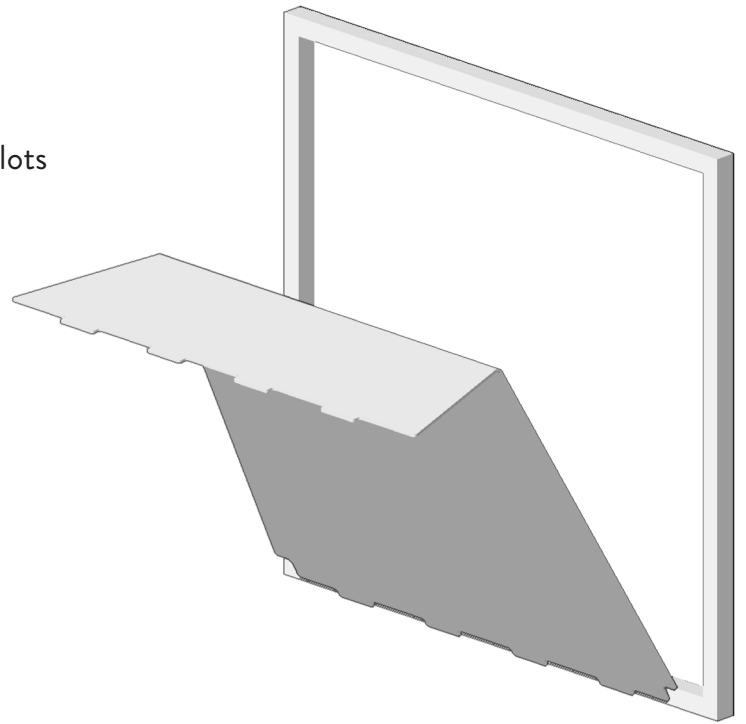
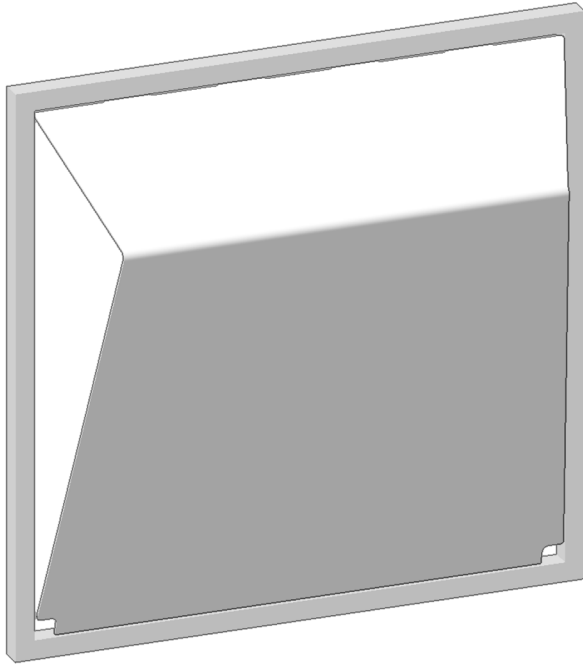


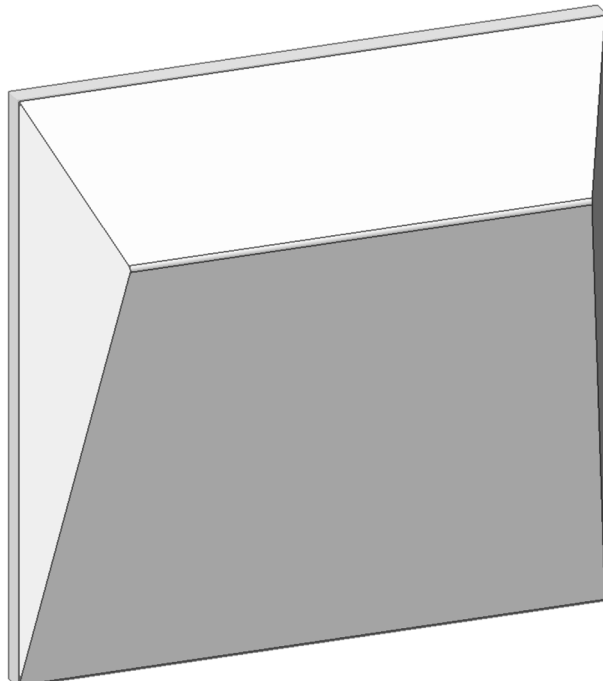
STEP ONE

Place tabs into channel or frame slots as illustrated.



STEP TWO

Bend Wedge insert into fabric, lifting the frame to allow the insert to bend into the fabric. Place Wedge insert edge into frame channels or slots.



Questions about ATOMIC products?
Contact your Modular Systems Account Manager!
www.atomicdesign.tv/contact