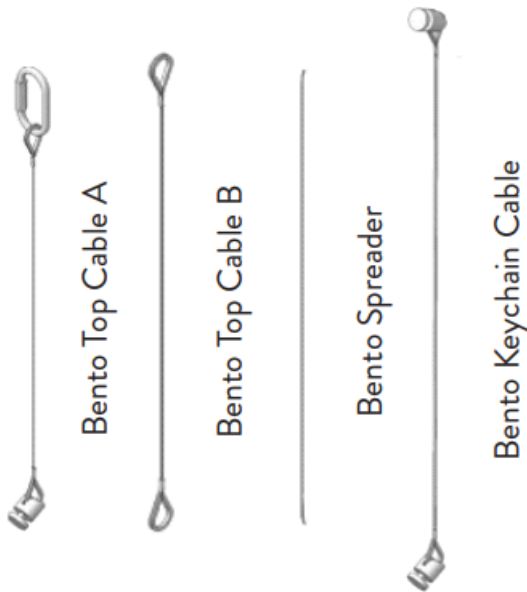


#### Bento Hardware



#### Standard Configuration

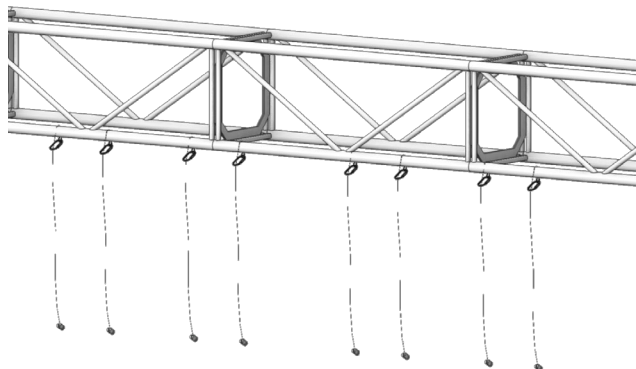


#### Alternating Configuration



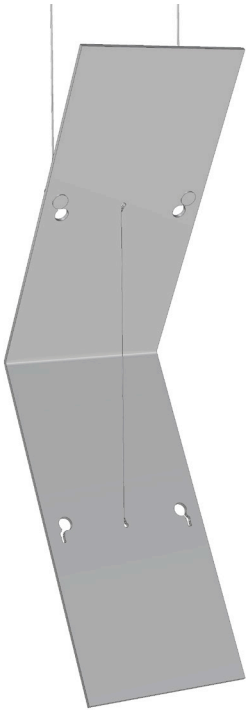
#### STEP ONE

Attach top cable to truss or pipe using quick links. Each panel requires 2 hanging cables.



#### NOTE:

For standard Keychain configuration use only Cable A to attach to truss. For alternating configuration use both Cable A and Cable B as shown.

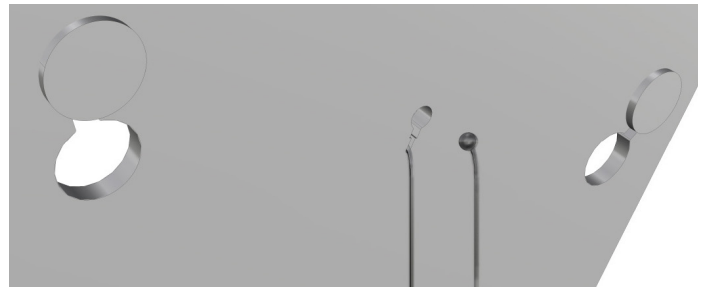


### STEP TWO

Insert spreader cable into Bento center holes.

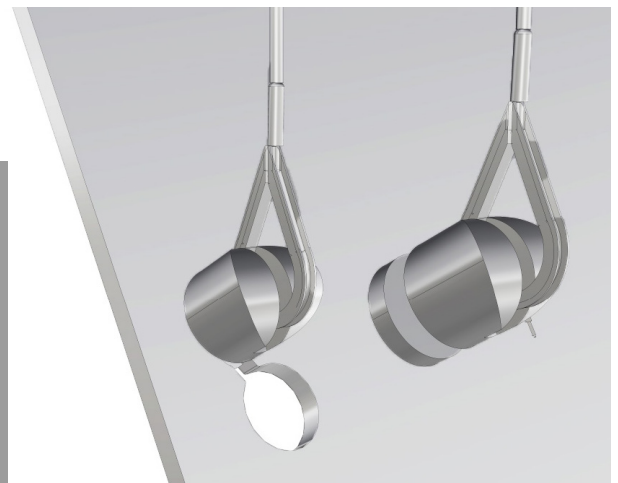
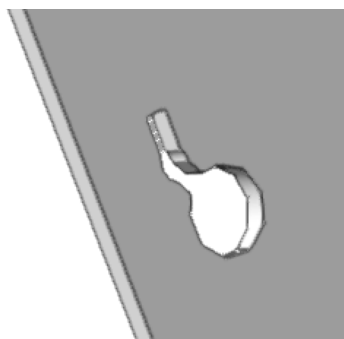
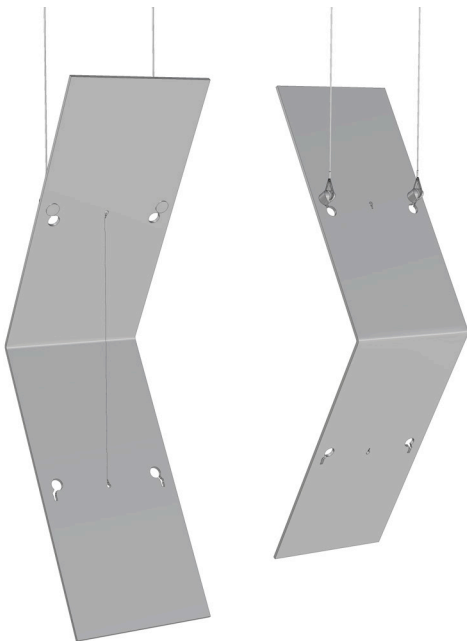
#### NOTE:

Do not hang bento without spreaders in place.



### STEP THREE

Attach the top cables to Bento panels as shown. Ensure Keychain fasteners rest securely in the narrow end of the keyhole. Bentos can be oriented facing “in” or “out”. Plan accordingly.



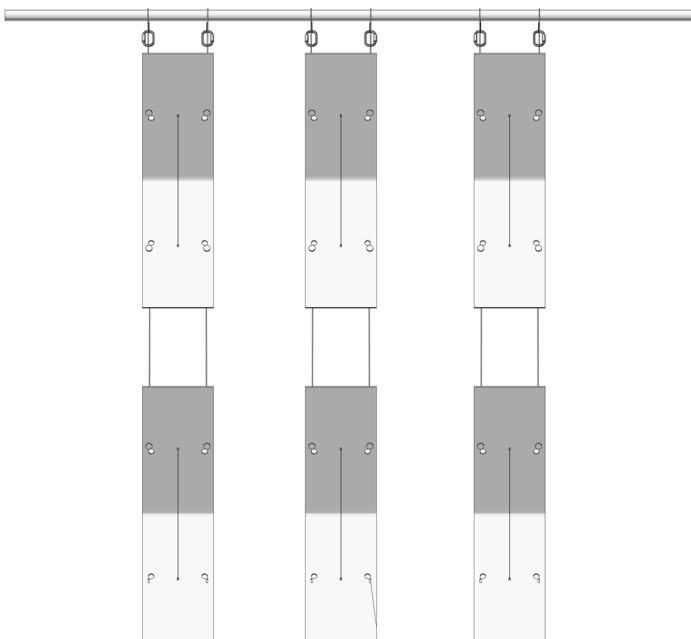
#### STEP FOUR

Repeat adding Bento panels with Bento keychain cables until you reach the desired height.

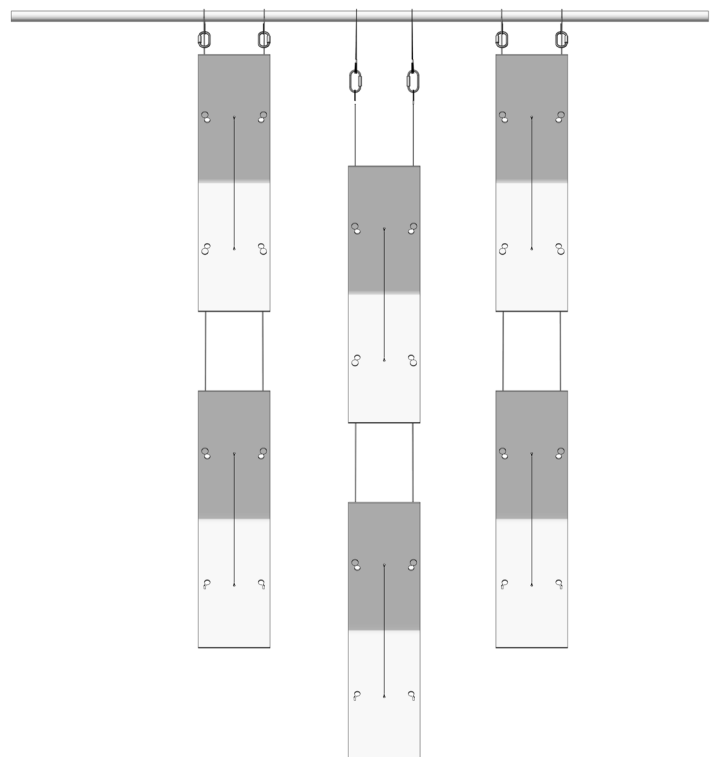
#### NOTE:

Panels hung from a standard configuration or an alternating configuration have a maximum height of six panels.

#### STANDARD CONFIGURATION



#### ALTERNATING CONFIGURATION



#### DISASSEMBLY INSTRUCTIONS:

Keychain Bento **MUST** be disassembled from bottom up, in reverse order as the assembly process. Removal of top panels first may result in a collapse.

Questions about ATOMIC products?  
Contact your Modular Systems Account Manager!  
[www.atomicdesign.tv/contact](http://www.atomicdesign.tv/contact)