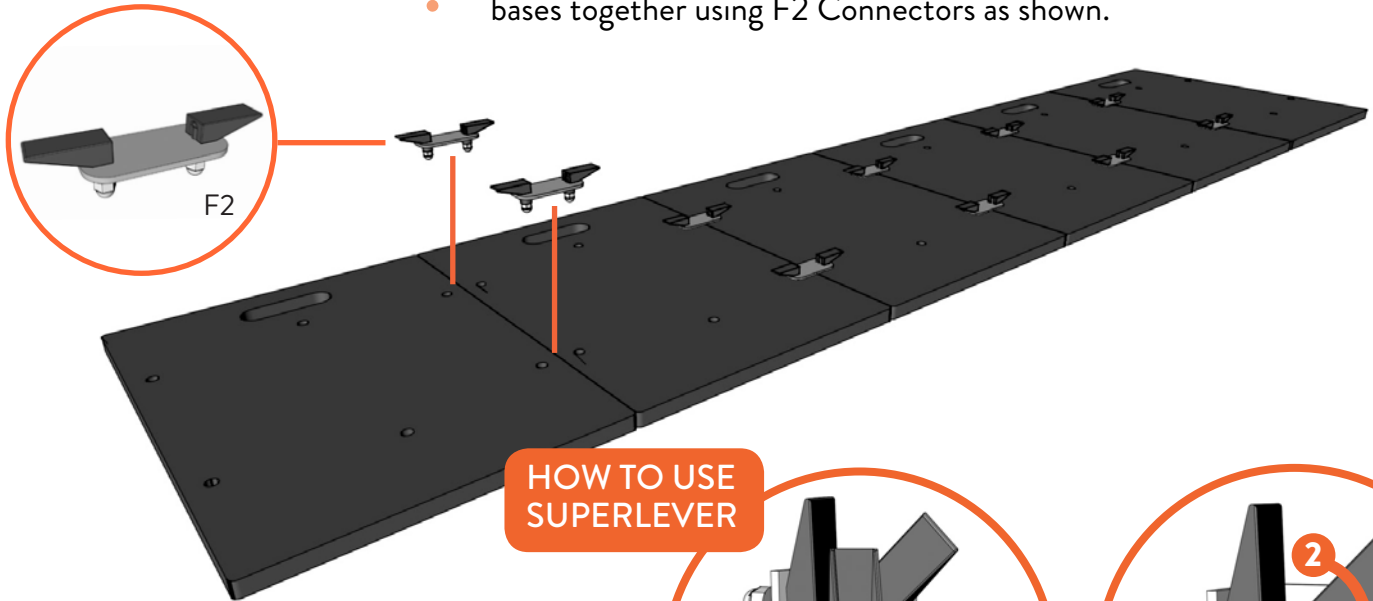
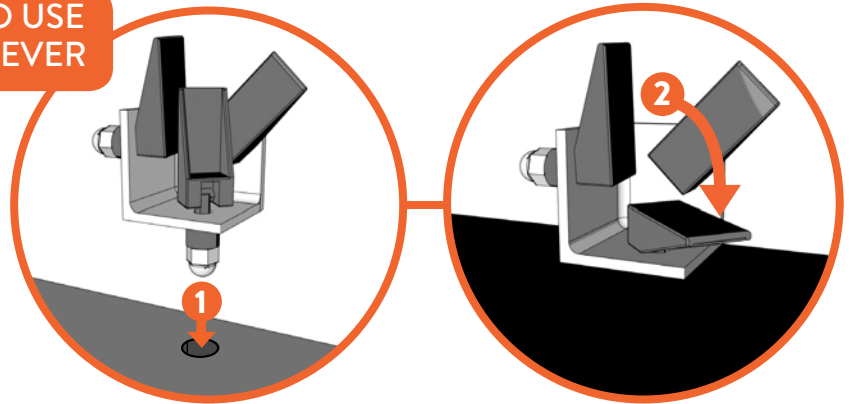


STEP ONE

Align bases with white feet facing down. Connect bases together using F2 Connectors as shown.

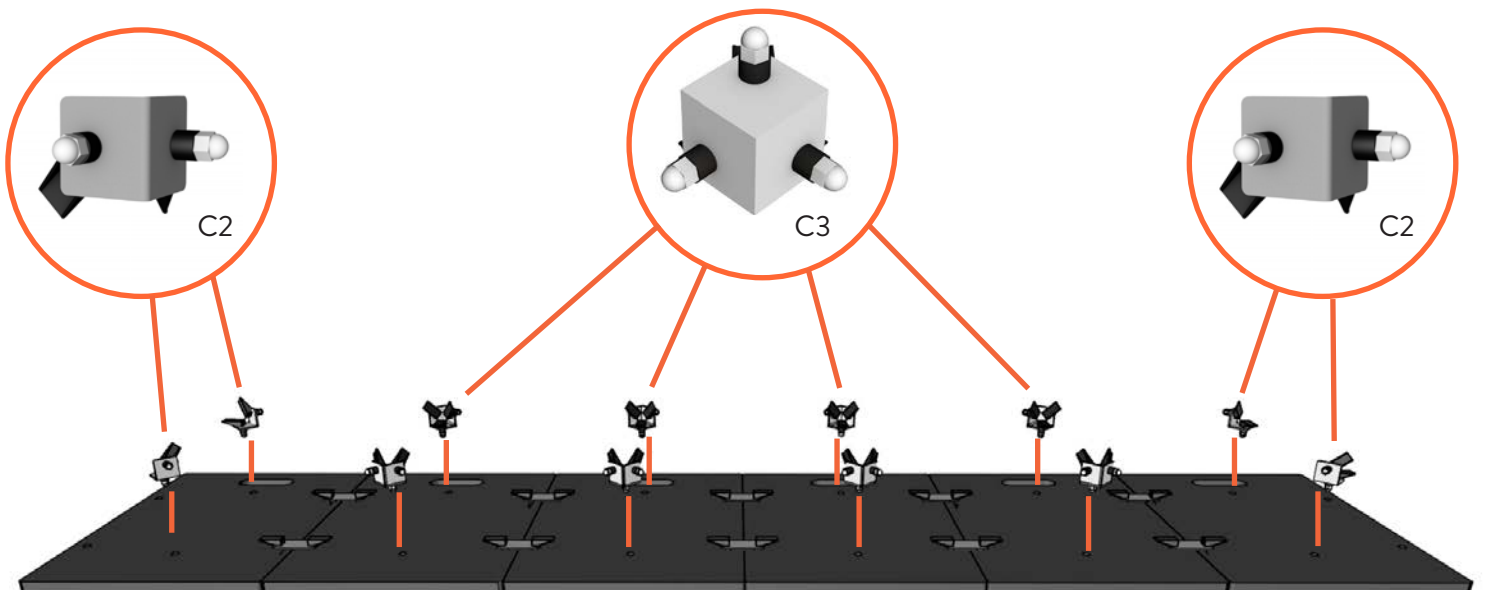


HOW TO USE SUPERLEVER



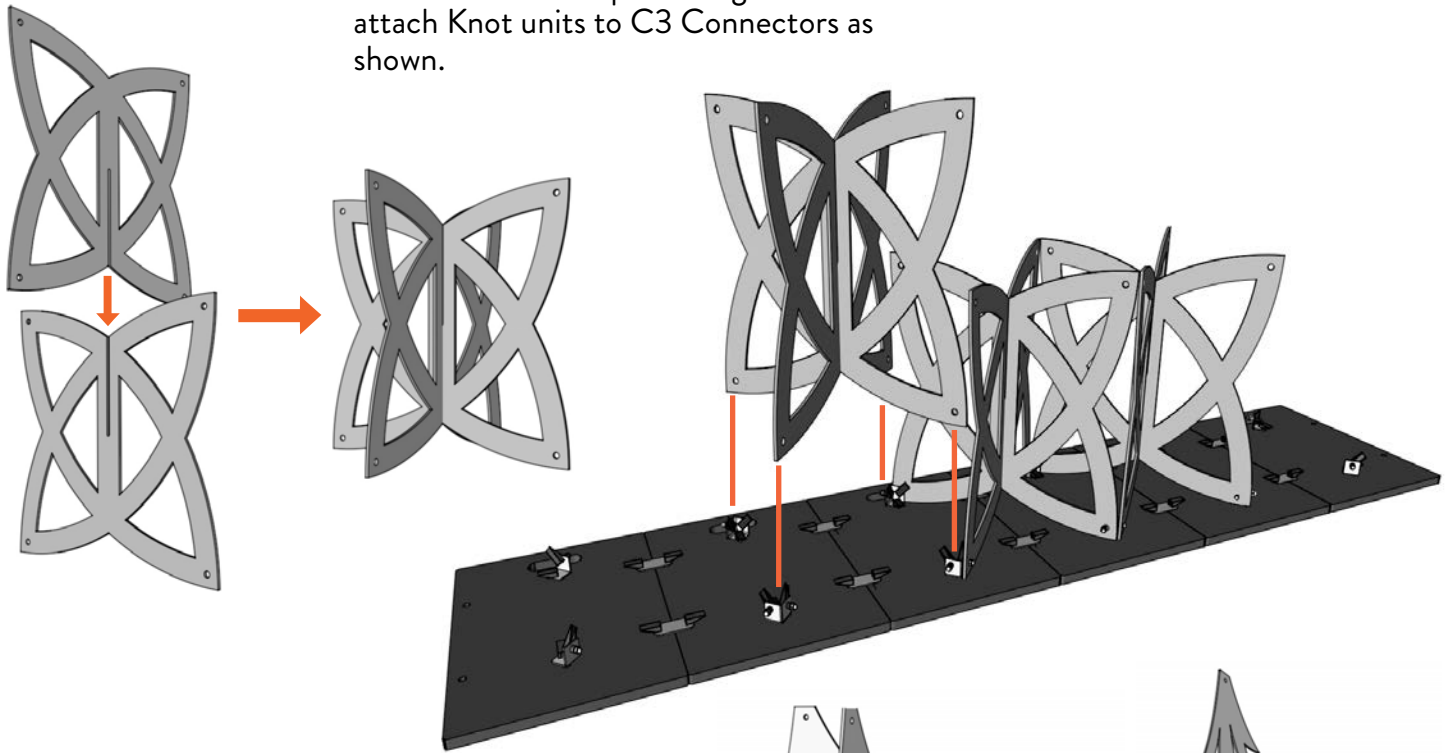
STEP TWO

Attach C2 and C3 Connectors using the holes in the center of each base where shown.



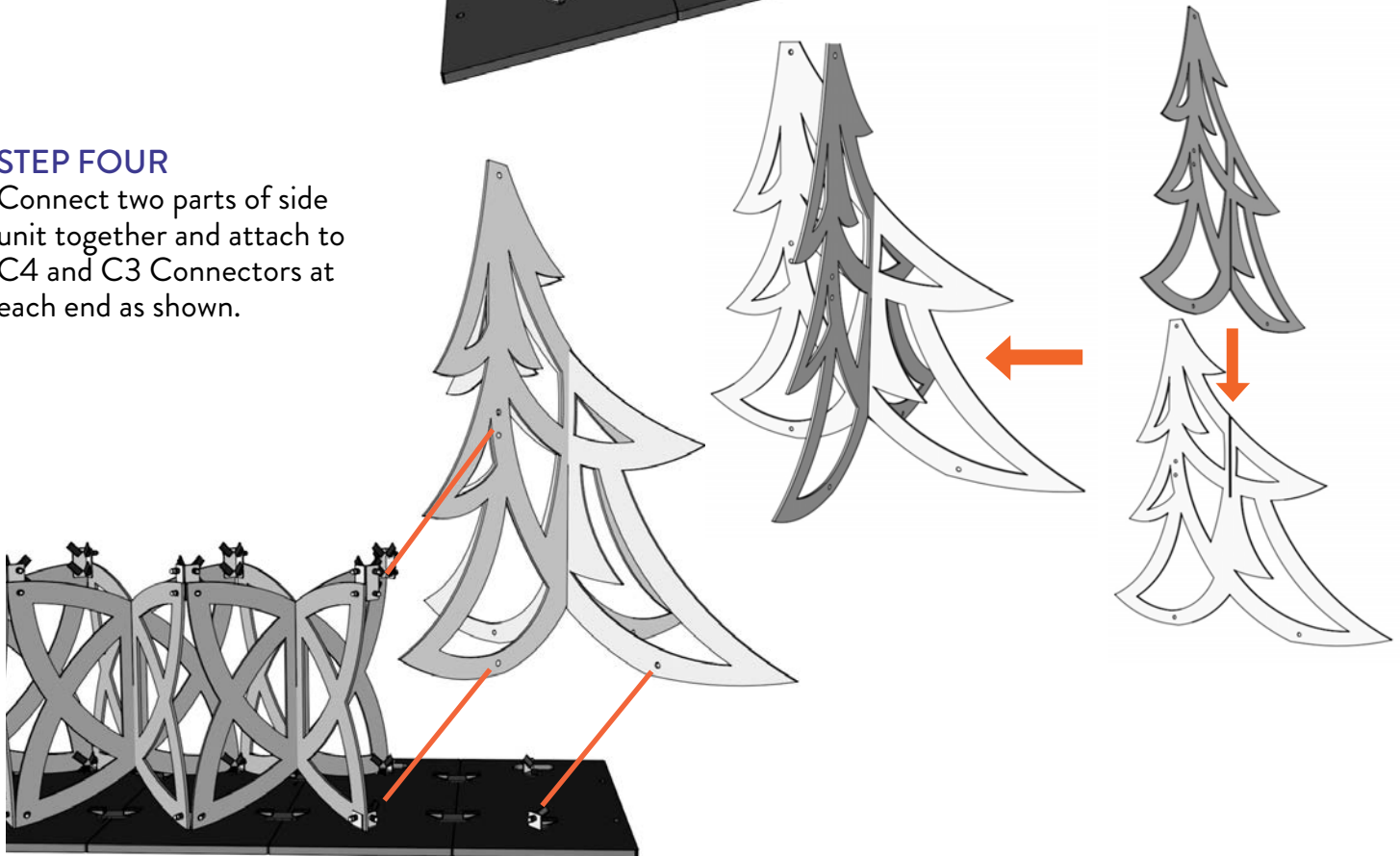
STEP THREE

Connect two Knot panels together and attach Knot units to C3 Connectors as shown.



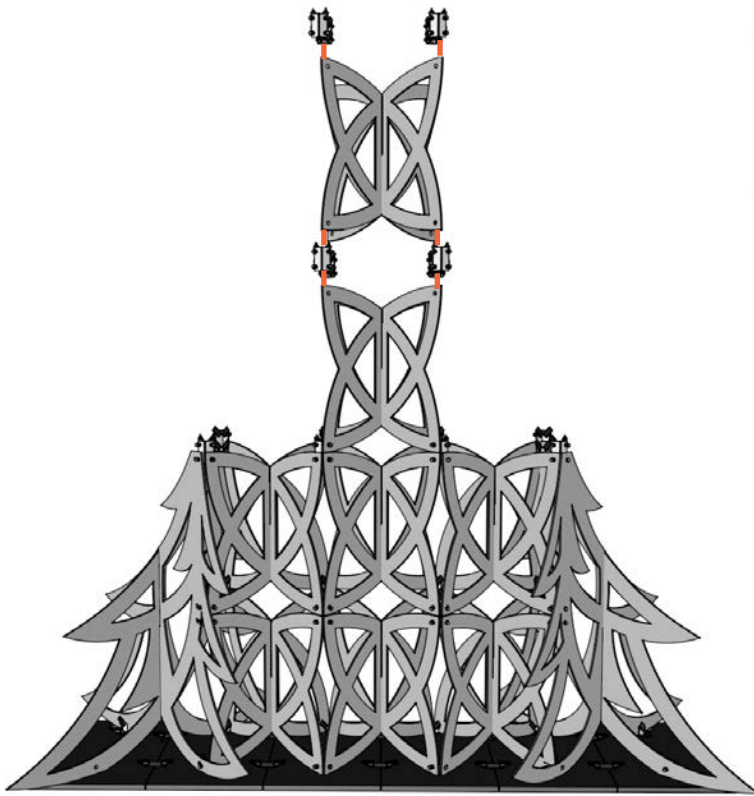
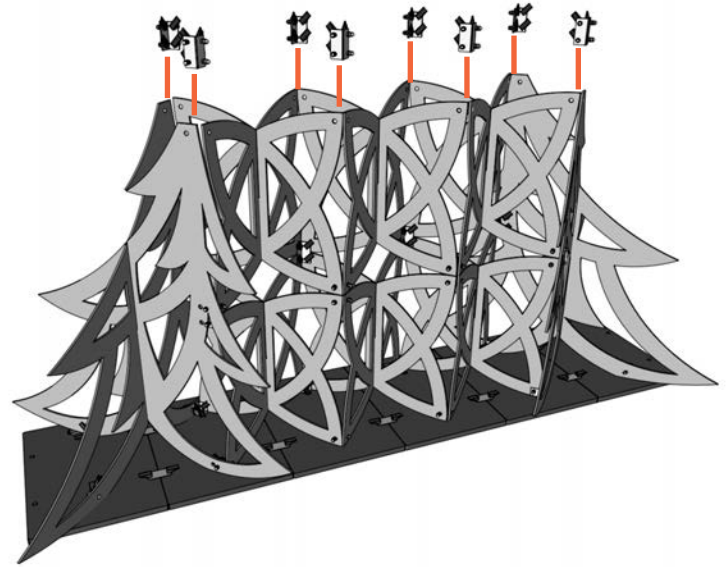
STEP FOUR

Connect two parts of side unit together and attach to C4 and C3 Connectors at each end as shown.



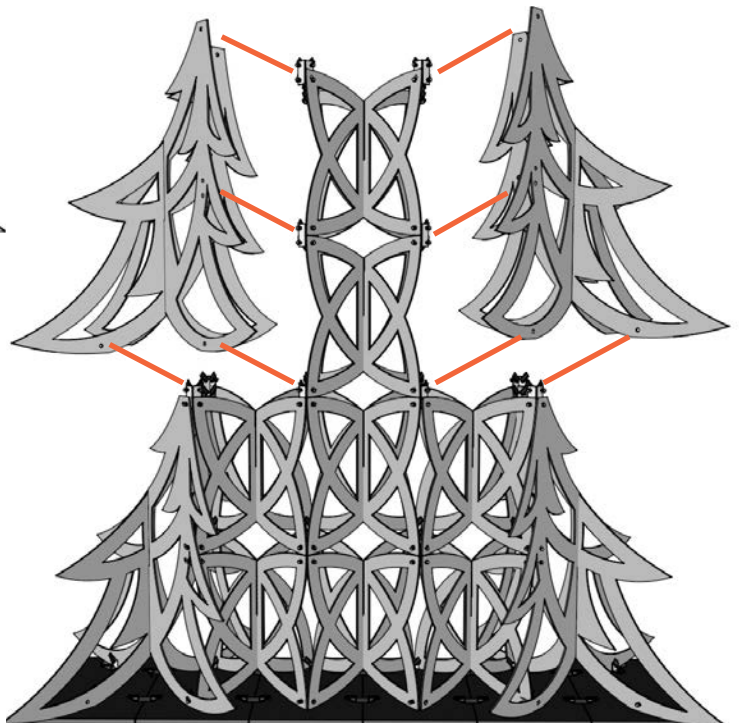
STEP FIVE

Attach C4 Connectors to top of side units and Knot units. Attach next level of Knot units using C4 Connectors as shown.



STEP SIX

Attach next level of side units to C4 Connectors. Repeat steps five and six as needed for desired FASTwall Fir size.



STEP SEVEN

Complete FASTwall Fir by connecting two parts of top unit together and attaching to C4 Connectors as shown.

