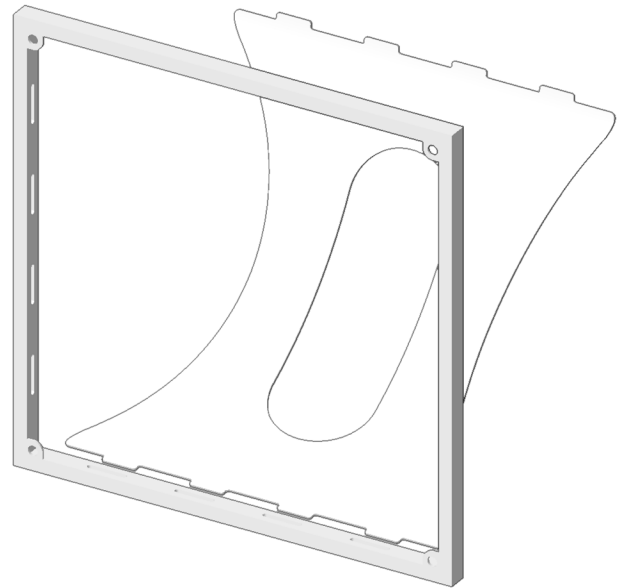
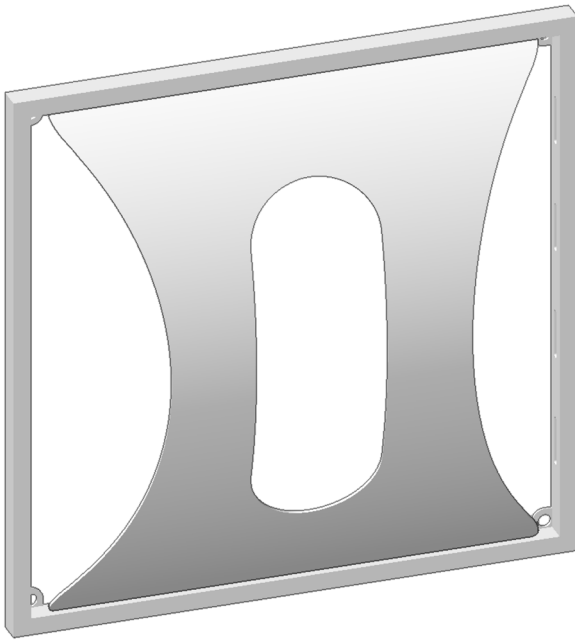


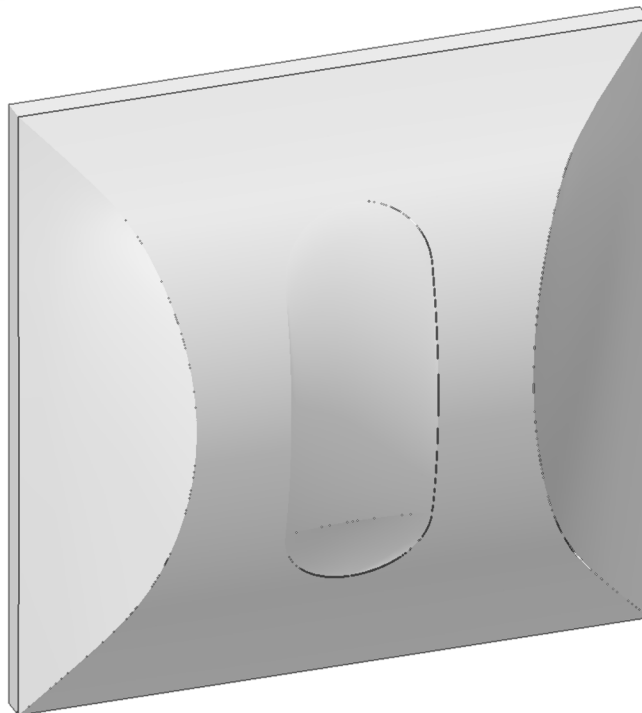
STEP ONE

Place tabs into channel or frame slots as illustrated.



STEP TWO

Bend Notch insert into fabric, lifting the frame to allow the insert to bend into the fabric. Place Notch insert edge into frame channel or slots.



Questions about ATOMIC products?
Contact your Modular Systems Account Manager!
www.atomicdesign.tv/contact